

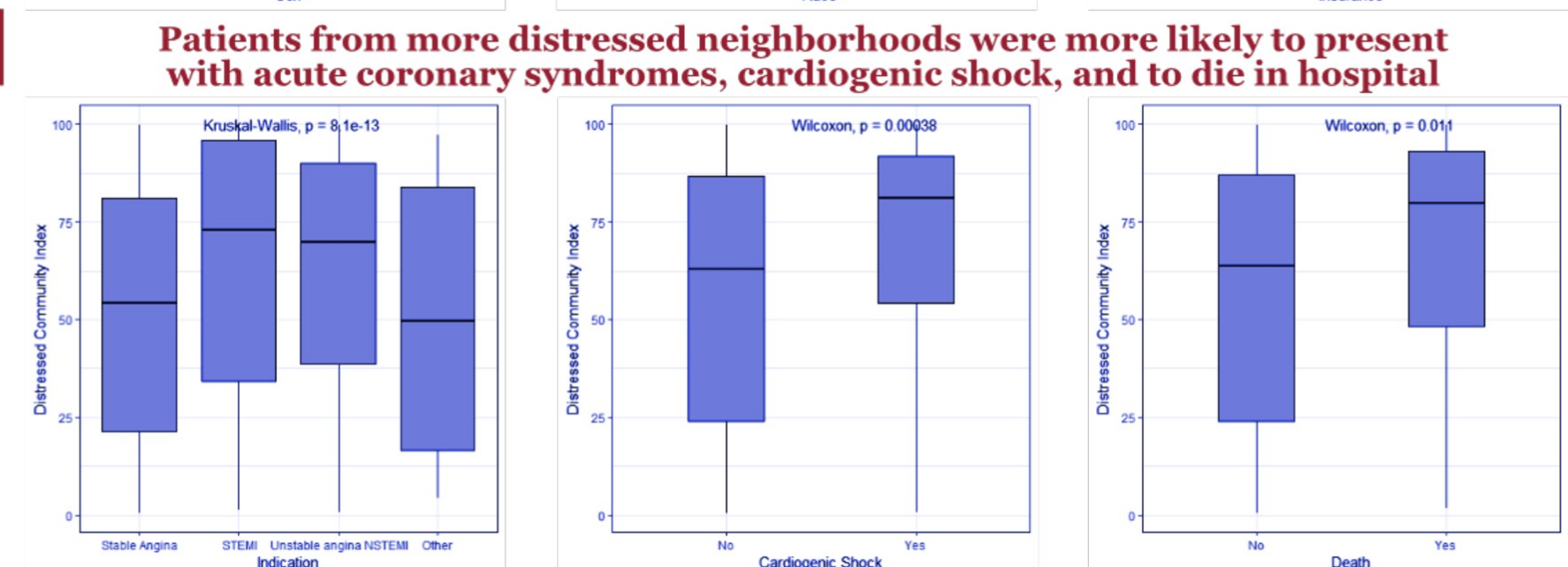
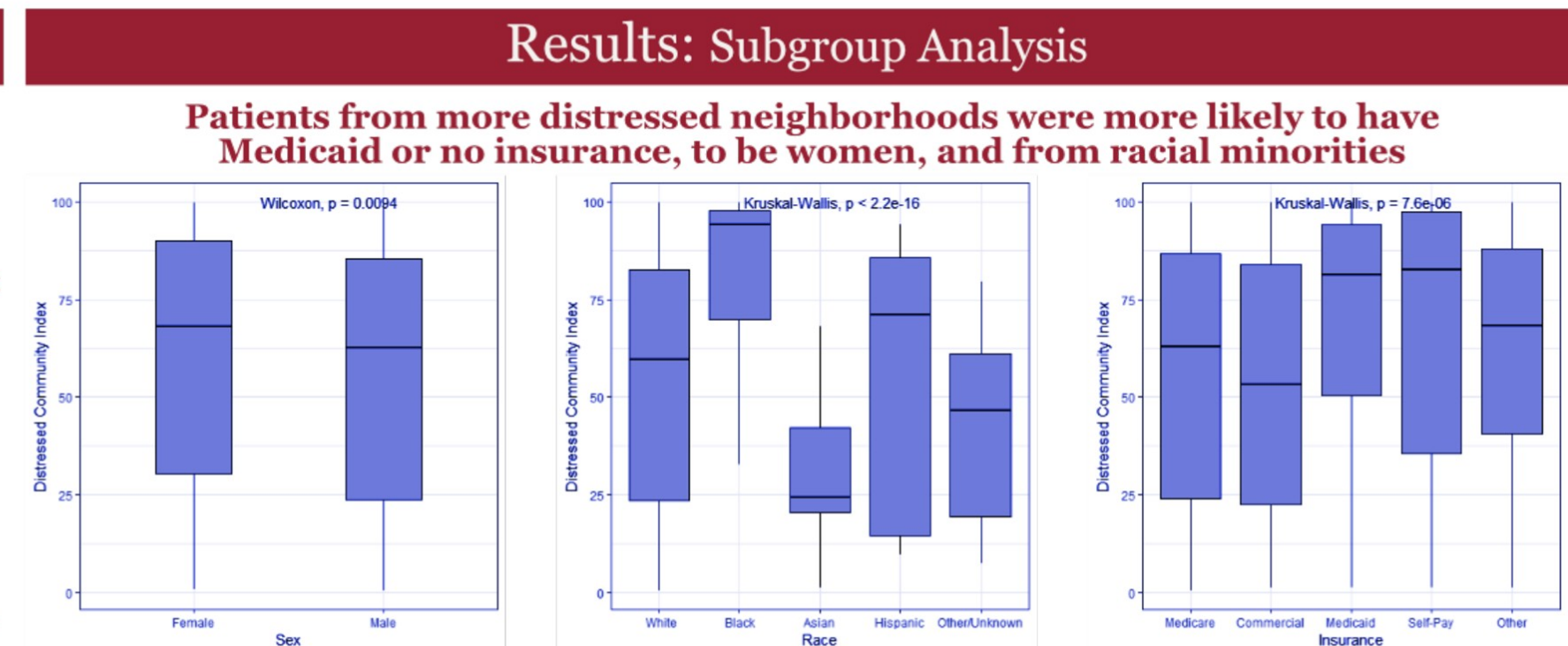
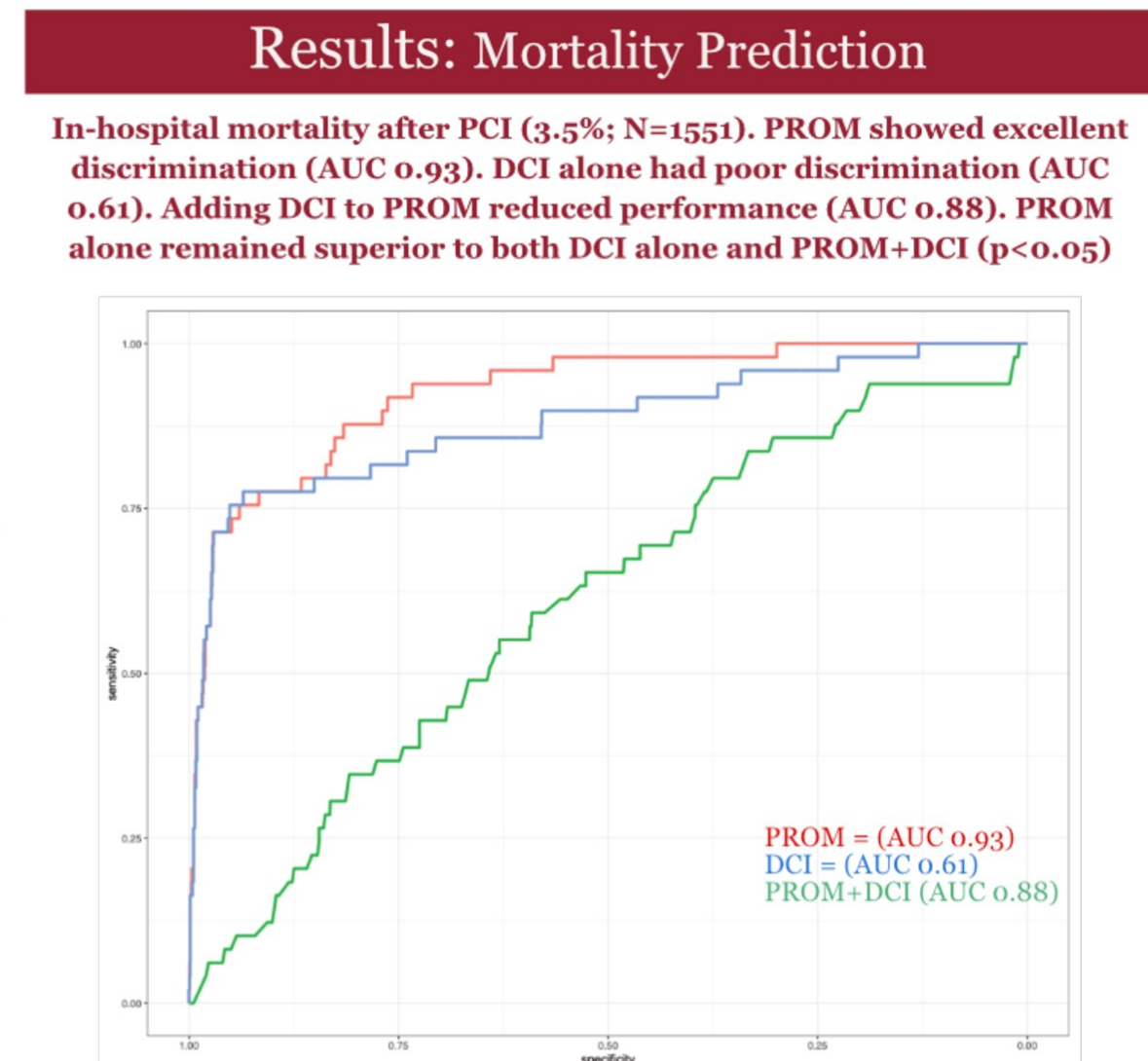
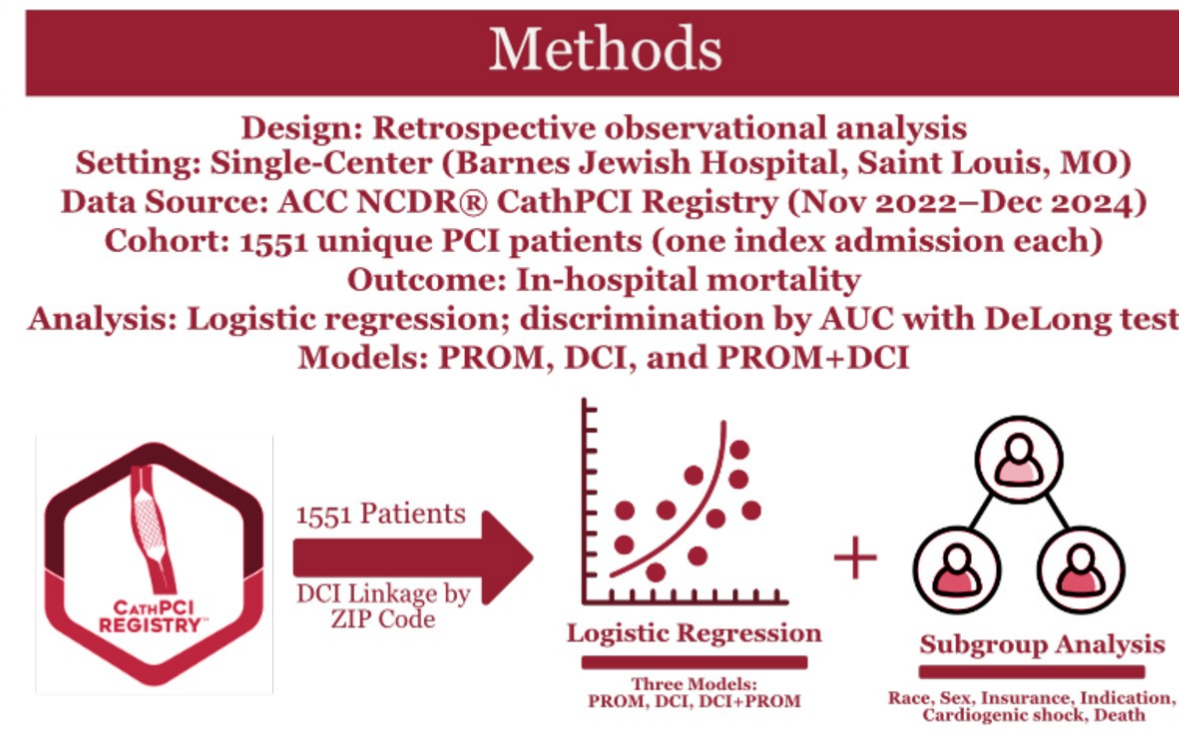
Neighborhood Distress Indicators*

7

- Educational Attainment
- Housing Vacancy
- Labor Participation
- Poverty Rate
- Income Ratio
- Employment Change
- Business Change

Question

Does neighborhood socioeconomic distress, measured by the Distressed Communities Index (DCI), improve prediction of in-hospital mortality after PCI beyond the Predicted Risk of Mortality model (PROM)?



Value Proposition

Patients: Highlighting vulnerable populations
Providers: Informing intervention planning
Society: Reducing healthcare disparities

Disclosures

Alan Zajarias is a consultant for Edwards Medtronic and Anteris Technologies

Take Home Message

Neighborhood distress is better suited to guide equity-focused interventions rather than prediction of short term mortality after PCI; Future work should evaluate impact on longer term outcomes

References

*Economic Innovation Group. Distressed Communities Index: 2022 methodology. Available at: <https://eig.org/distressed-communities/2022-dci-methodology/>. Accessed August 11, 2025.