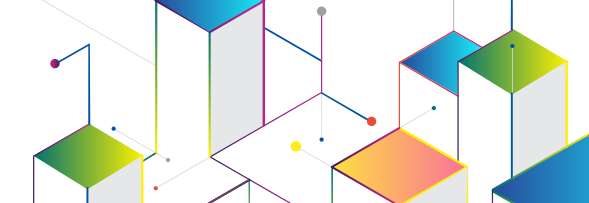




SESSIONS AT-A-GLANCE

DAY 1 - WEDNESDAY, SEPT. 14

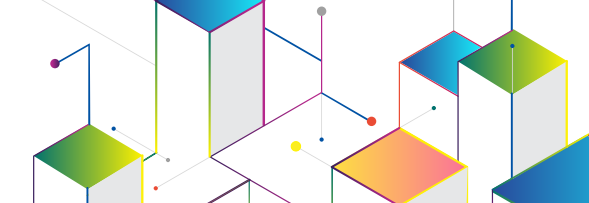
TIME <i>All times are Pacific Standard Time</i>	LEAD CHANNEL <i>(All sessions will be live streamed.)</i>
7 - 8:45 a.m.	<i>Breakfast – Registration – Visit the Summit Showcase – Coffee Chat via REMO (7:45 - 8:45 a.m.)</i>
8:45 - 9 a.m.	The Voices of Quality Summit – A Video Montage
9 - 10 a.m.	Conversation with the Experts – Session #1
	Conversation with the Experts – Session #2
10 - 10:45 a.m.	<i>Break – Visit the Summit Showcase – Honorable Mention #3 Poster Presentation (10:15 -10:30 a.m.)</i>
11 - 11:45 a.m.	ACCREDITATION TRACK Pioneering the 2022 Heart Failure Guidelines
11:45 - 1 p.m.	<i>Lunch – Visit the Summit Showcase – Honorable Mention #2 Poster Presentation (12:30 -12:45 p.m.)</i>
1:15 - 2:15 p.m.	Conversation with the Experts – Session #3
	Conversation with the Experts – Session #4
2:30 - 4:30 p.m.	<i>Visit the Summit Showcase – Honorable Mention #1 Poster Presentation (2:30 - 2:45 p.m.)</i>
5 - 7 p.m.	<i>Live Welcome Networking Event – Network Under the California Sunset</i>



SESSIONS AT-A-GLANCE

DAY 2 - THURSDAY, SEPT. 15

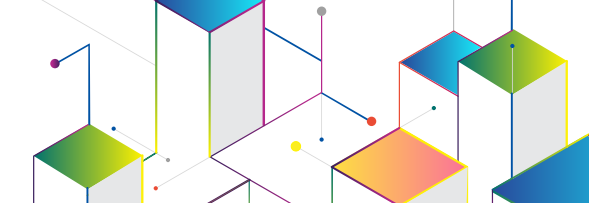
TIME <i>All times are Pacific Standard Time</i>	DESIGN CHANNEL <i>(All sessions will be in-person Only.)</i>	LEAD CHANNEL <i>(All sessions will be live streamed.)</i>	ACHIEVE CHANNEL <i>(All sessions will be in-person Only.)</i>
7 - 8:30 a.m.		Breakfast – Visit the Summit Showcase Coffee Chat via REMO (7:45 - 8:30 a.m.)	
8:30 - 9:45 a.m.		OPENING PLENARY/THE RALPH G. BRINDIS KEYNOTE Frederick Masoudi, MD, MSPH, MACC, FAHA Past, Present and Future Direction of NCDR and Accreditation Services	
9:45 - 10:30 a.m.		Break – Visit the Summit Showcase 3rd Place Poster Presentation (10 -10:15 a.m.)	
10:30 - 11:15 a.m.	EP DEVICE IMPLANT TRACK The Value of EP Device Registry Data: Impacting Care Delivery with Data and Metrics	LEADERSHIP TRACK Cardiac Rehab - Improving Cardiac Rehab Referrals and Addressing the Cost And Revenue Impact	ACCREDITATION TRACK Building a Successful Structural Heart Program
11:15 - Noon		Break – Visit the Summit Showcase 2nd Place Poster Presentation (11:30 -11:45 a.m.)	
Noon - 12:45 p.m.	CATHPCI TRACK You CAN Speak for the Data, We'll Show You!	STS/ACC TVT TRACK Toolkit to Success for TVT Programs Part 1	LAAO TRACK Risk Prediction and How the HAS-BLED/CHA ₂ DS ₂ -VASC Assessments and Scores Interconnect
12:45 - 1:45 p.m.		Lunch – Visit the Summit Showcase 1st Place Poster Presentation (1:15 - 1:30 p.m.)	
1:45 - 2:45 p.m.		GENERAL SESSION Leveraging Your CV Registry Data and Accreditation to Advance Equity of Care	
2:45 - 3 p.m.		Break – Visit the Summit Showcase	
3 - 3:45 p.m.	CHEST PAIN MI TRACK CPMI + CPC = Synergy	AFIB TRACK So Many Ablation Strategies - How to Choose?	
3:45 - 4:45 p.m.		Visit the Summit Showcase	



SESSIONS AT-A-GLANCE

DAY 3 - FRIDAY, SEPT. 16

TIME <i>All times are Pacific Standard Time</i>	DESIGN CHANNEL <i>(All sessions will be in-person Only.)</i>	LEAD CHANNEL <i>(All sessions will be live streamed.)</i>	ACHIEVE CHANNEL <i>(All sessions will be in-person Only.)</i>
7 - 8:45 a.m.		Breakfast – Visit the Summit Showcase Coffee Chat via REMO (7:45 - 8:45 a.m.)	
8:45 - 9:45 a.m.		GENERAL SESSION Rebuilding the CV Team in the Wake of COVID-19	
9:45 - 10 a.m.		Break – Visit the Summit Showcase	
10 - 10:45 a.m.		CHEST PAIN MI TRACK Type II MI & MINOCA – Strategies for Success	LEADERSHIP TRACK Post COVID-19 Response – Getting Back to the Basics
10 - 11 a.m.		Break – Visit the Summit Showcase	
11 - 11:45 a.m.	LAAO TRACK Safe and Successful Medication Management Strategies and All Provider Communication for Patient Receiving an LAAO Device	CATHPCI TRACK Mitigating Acute Kidney Injury – Learn from these Rockstars	AFIB TRACK The Convergent Procedure: A Hybrid Approach to AFib Ablation
11:45 - 12:45 p.m.		Lunch – Visit the Summit Showcase	
12:45 - 1:45 p.m.		GENERAL SESSION & CLOSING/WRAP UP Disruptions on the Horizons – How Tech Will Address the Changing Landscape	
1:45 - 2 p.m.		Break – Visit the Summit Showcase	
2 - 2:45 p.m.	STS/ACC TVT TRACK Toolkit to Success for TVT Programs Part 2	EP DEVICE IMPLANT TRACK Pacing Down Hollywood Blvd.	



TOGETHER NCDR AND ACCREDITATION DESIGN, LEAD & ACHIEVE QUALITY

PRESENTATIONS ON DEMAND	DESIGN CHANNEL	LEAD CHANNEL	ACHIEVE CHANNEL
Accreditation Services		Riding Out the Storm: Resilience Through Accreditation	
Leadership	Navigating Same-Day Discharge – Decreasing Readmissions and Improving Satisfaction		Observation Management – Keys to a Successful ACS Observation Program
NCDR			
AFib Ablation		The Detail is in the Documentation – Risk Score Coding	
Chest Pain - MI	False Cath Lab Activations, But Are They a Bad Thing?	Why Clinical Frailty?	A Collaboration to Improve Low Compliance in the Utilization of Risk Score for NSTEMI Patients ◆
CathPCI	Where to Go? The Quest for Registry Answers	Quality of Care Composite – One Stop Shopping	Using a Collaborative Quality Improvement Registry to Improve Radiation Dose Reporting and Reduction: The BMC2 PCI Experience in Michigan ◆
EP Device Implant		Quality Improvement Process in Response to NCDR Device Registry ICD Data	Shared Decision Making is Here to Stay ◆
IMPACT		Let's See What the Risk Model Shows Us About Our Patients!	
LAAO	Streamlining Same-Day Planning for Left Atrial Appendage Closure Procedure with Transesophageal Echocardiography ◆	Bridging LAAO Data and Quality Improvement	How to Project and Prepare for the Abstraction Burden of Follow Ups in a High Volume LAAO Registry™ Program ◆
STS/ACC TVT	Identifying Racial Disparities in Access to TAVR Procedures in a South Carolinian Safety-Net Hospital ◆	Shared Decision Making Leads to Improved Patient Outcomes ◆	
GENERAL TOPICS			
NCDR/Accreditation Update	What's New What's Different?		ACC's Global Quality Solutions
2020 Accreditation Quality Initiative Recipients	Promoting Awareness of Heart Attack Symptoms and Responsive Action	Using a Multi-Disciplinary Virtual Consultation Platform to Enhance Community Referrals for Developing a Cardiac Amyloidosis Program (Enhance-refCA)	Enhancing Recovery After Heart Transplant A Patient-Participation Approach to Co-Designing a New Pre-Habilitation Program
SVS VQI		Putting Registry Data Into Action: Lessons Learned from the Vascular Quality Initiative	
ACPC QNet	Building a Better Mousetrap: Leveraging Technology for Quality Improvement Process Improvement		ACHD Quality of Care – Why It Matters