



2023
EDITION

Best Hospitals

Exclusive Rankings

Workforce Shortage:
America's Hospitals
Are Under Strain

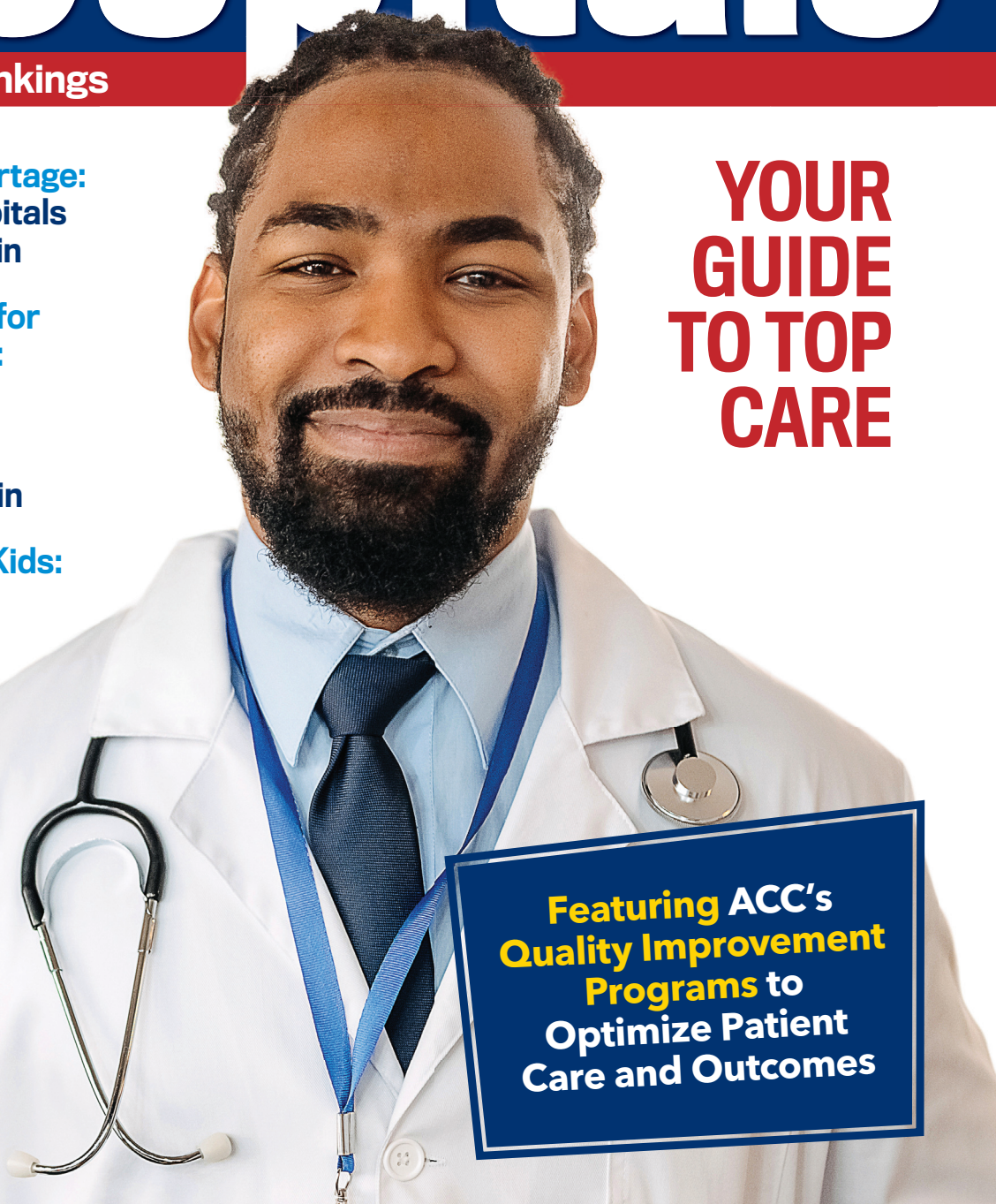
**Best Hospitals for
Maternity Care:**
Inaugural List

**11 Reasons
to Strength Train**

Long COVID in Kids:
What Parents
Need to Know

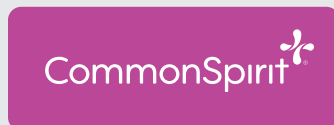
**YOUR
GUIDE
TO TOP
CARE**

**Featuring ACC's
Quality Improvement
Programs to
Optimize Patient
Care and Outcomes**

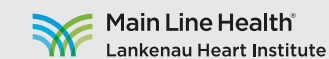




The American College of Cardiology (ACC) recognizes these Health Systems for their commitment to drive preeminent hospital care for heart patients. Participating in the ACC's proven quality care delivery and outcomes programs demonstrates their commitment to better lives for healthier tomorrows.



Indiana University Health



Tenet Health System
Baylor Health Care System
Sentara Healthcare
Ballad Health System
Banner Health
Baptist Memorial Healthcare Corporation
BJC HealthCare
Christus Health System
Hendrick Health
Legacy Health

University of California Health System
Kaiser Permanente
Orlando Health
Lehigh Valley Health Network
Memorial Health System of California
Methodist Healthcare
MultiCare Health System
Northside Hospital System
Northwell Health
PeaceHealth

Yale New Haven Health
Mayo Foundation for Medical Education and Research
ProMedica Health System, Inc.
Quorum Health Corporation
Singing River Health System
SSM Health Care
St. Luke's University Health Network
University of Colorado Health
University of Louisville Health, Inc.
Wellstar Health System

Visit [CVQuality.ACC.org/HealthSystems](https://www.CVQuality.ACC.org/HealthSystems) to learn more.

THE HEART OF QUALITY PATIENT CARE

As the global professional organization for the entire cardiovascular care team, the American College of Cardiology (ACC) is committed to supporting patients, caregivers, and health care professionals by ensuring the highest quality care is delivered to every patient, every time.

ACC Accreditation Services™

ACC Accreditation Services links performance improvement to patient outcomes and promotes consistent processes across the care continuum. Working with hospitals, centers and health systems, ACC Accreditation Services partners to build communities of excellence by advancing the highest standards of quality patient care.

NCDR® (National Cardiovascular Data Registry)

For 25 years, the NCDR has delivered a suite of data registries to help hospitals, centers and health systems measure and improve the quality of cardiovascular care they provide. The NCDR utilizes real-world evidence to improve patient outcomes and achieve quality heart care.

MedAxiom, an ACC Company

MedAxiom is the premier source for cardiovascular organizational performance solutions. MedAxiom unites the cardiovascular community via cutting-edge education, networking opportunities and best practices to transform cardiovascular care, together.

FOR CARDIOVASCULAR PROFESSIONALS, please visit CVQuality.ACC.org to learn more about ACC's Quality Improvement for Institutions program. To learn more about cardiovascular organizational performance solutions, visit MedAxiom.com.

FOR PATIENTS AND CAREGIVERS, please visit CardioSmart.org to learn more about ACC's clinician-directed heart health education and resources.

The following pages list more than 2,000 hospitals, centers and health systems that rely on ACC's NCDR and Accreditation Services. Patients and caregivers can trust hospitals and centers that participate in the NCDR, receive the ACC's Accreditation seal of approval, and are recognized with the Chest Pain – MI Registry™ Performance Achievement Award and the HeartCARE Center™ Award for delivering the best cardiovascular patient care.

ACC ACCREDITATION SERVICES

AF Atrial Fibrillation Accreditation

Incorporates evidence-based guidelines and clinical best practices to treat patients with atrial fibrillation.

CL Cardiac Cath Lab Accreditation

Merges the latest evidence-based science and process improvement methodologies, while addressing pre-procedure, peri-procedure and post-procedure care for patients undergoing treatment in the Cath Lab.

CP Chest Pain Center Accreditation

Integrates triage treatment protocols, risk stratification, and best practices for the emergency care of acute coronary syndrome patients.

EP Electrophysiology Accreditation

Links the latest science, process improvement methodologies and patient outcomes across the care continuum for patients undergoing treatment in the EP Lab.

HF Heart Failure Accreditation

Leverages guideline-directed medical therapies and best practices to ensure greater operational efficiency and a more consistent approach to treatment.

TV Transcatheter Valve Certification

Utilizes evidence-based science, real-world patient outcomes and expert recommendations to standardize and improve care for patients requiring transcatheter valve therapies.

NCDR

A AFib Ablation Registry™

(Catheter-based atrial fibrillation ablation procedures) Assesses the prevalence, demographics, acute management and outcomes of patients undergoing atrial fibrillation (AFib) catheter ablation procedures.

G CathPCI Registry®

(Diagnostic cardiac catheterization and percutaneous coronary intervention) Measures adherence to the ACC/AHA clinical practice guideline recommendations, procedure performance standards and appropriate use criteria for coronary revascularization.

CP Chest Pain – MI Registry™

(Acute myocardial infarction treatment) Leverages national evidence-based standards for understanding and improving the quality, safety and outcomes of care provided for heart attack patients.

E EP Device Implant Registry™

(Implantable cardioverter defibrillator and pacemaker procedures) Provides a national standard for understanding patient characteristics, treatments, outcomes, device safety and the overall quality of care for ICD/CRT-D and select novel pacemaker procedures.

IM IMPACT Registry®

(Pediatric and adult congenital treatment procedures) Assesses the prevalence, demographics, management and outcomes of pediatric and adult congenital heart disease patients who undergo diagnostic catheterizations and catheter-based interventions.

L LAAO Registry™

(Left atrial appendage occlusion procedures) Captures data on left atrial appendage occlusion (LAAO) procedures to assess real-world procedural outcomes, short and long-term safety, and comparative effectiveness.

T STS/ACC TVT Registry™

(Transcatheter valve therapy procedures) Monitors real-world outcomes on transcatheter valve therapies leading to improved patient outcomes, enhanced assessment of treatment options and results, and more informed decision making.

HONORS

Chest Pain – MI Registry™ Performance Achievement Award

Recognizes hospitals participating in Chest Pain – MI Registry that have demonstrated sustained, top level performance in quality of care and adherence to guideline recommendations.

▲ **Platinum**

▲ **Gold**

▲ **Silver**

HeartCARE Center™

Recognizes hospitals that have demonstrated a commitment to world-class cardiovascular care through comprehensive process improvement, disease and procedure-specific accreditation, professional excellence and community engagement.



ALABAMA

Grandview Medical Center..	C CP E L T CL CP
Huntsville Hospital	C CP E L T
Shelby Baptist Medical Center.....	G L T CL TV
University of Alabama Hospital	A C E L T
Ascension Providence.....	G E L T
Health Care Authority for Baptist Health	G E L T
Riverview Regional Medical Center ..	C E CL CP
St. Vincent's East.....	C E L T
St. Vincent's Hospital	G E L T
Andalusia Regional Hospital	E CP HF
Brookwood Medical Center	C L T
Crestwood Medical Center	C CP CP
DCH Regional Medical Center.....	C E L
Mobile Infirmary Medical Center	C L T
North Alabama Medical Center	C E CP
Princeton Baptist Medical Center	C L T
Southeast Health.....	L T CP
Springhill Medical Center	C L T
Dekalb Regional Medical Center	C CP
East Alabama Medical Center.....	C T
Flowers Hospital	C CP
Gadsden Regional Medical Center	C CP
Jackson Hospital and Clinic	C L
Northeast Alabama Regional Medical Center.....	C E
South Baldwin Regional Medical Center	C CP
Thomas Hospital.....	C T
Vaughan Regional Medical Center.....	C CP
Baptist Medical Center South	CL
Cullman Regional Medical Center.....	C
Marshall Medical Center.....	C
Russell Medical Center.....	E
Shoals Hospital.....	CP
University of South Alabama Cardiology Department	C
Walker Baptist Medical Center	C

ALASKA

Alaska Regional Hospital.....	C L T AF CP
Providence Alaska Medical Center.....	A C CP T
Mat-Su Regional Medical Center.....	C CP
Alaska Native Medical Center	C
Central Peninsula Hospital.....	C
Fairbanks Memorial Hospital	C

ARIZONA

Chandler Regional Medical Center.....	A C CP E L T CP
Abrazo Arizona Heart Hospital.....	C CP L T AF CL HF
Mercy Gilbert Medical Center.....	A C CP E CP
Havasu Regional Medical Center ..	C E T CL CP
Saint Joseph's Hospital and Medical Center	A C CP L T
Tucson Medical Center	C CP L T CP

Abrazo Arrowhead Campus.....	C CP L T
Carondelet St. Mary's Hospital	C L T CP
Northwest Medical Center	C L T CP
Yavapai Regional Medical Center.....	A C L T
Abrazo Central Campus	C CP CP
HonorHealth.....	C L T
Mayo Clinic Arizona.....	C L T
Mountain Vista Medical Center	C CP L
Valley View Medical Center	C E CP
Western Arizona Reg Medical Center ..	C CP CP
Yuma Regional Medical Center	C E T
Abrazo Scottsdale Campus	C CP
Abrazo West Campus.....	C CP
Banner - University Medical Center Tucson..	L T
Banner Boswell Medical Center	L T
Banner Desert Medical Center	L T
Banner Heart Hospital.....	L T
Banner Thunderbird Medical Center.....	L T
Banner University Medical Center - Phoenix.....	L T
Canyon Vista Medical Center.....	C E
Carondelet St. Joseph's.....	C CP
Flagstaff Medical Center	C L
Honor Health - Deer Valley Medical Center.....	C T
HonorHealth John C. Lincoln Medical Center..	C
Kingman Regional Medical Center.....	C
Oro Valley Hospital.....	C
Phoenix Children's Hospital.....	IM
Santa Cruz Valley Regional Hospital.....	CP
Tempe St. Luke's Hospital.....	C
Verde Valley Medical Center	C

ARKANSAS

CHI St. Vincent Infirmary	A C CP L T
Mercy Health System of Northwestern Arkansas	C CP L T CP
National Park Medical Center	A C CP E
University of Arkansas Medical Sciences Physician	A C CP L T
Arkansas Heart Hospital	C CP L T
Baptist Health - Fort Smith	C CP CP
Baptist Health Medical Center - Little Rock	C CP L T
Northwest Medical Center - Bentonville.....	C CP L CP
Saline Memorial Hospital	C CP CP
Washington Regional Medical Center	C CP L T
Baptist Health Medical Center - North Little Rock	C CP L
Baxter Regional Medical Center	CP E T
CHI St. Vincent Hospital Hot Springs.....	C CP
Mercy Hospital Fort Smith.....	C CP CP
NEA Baptist Memorial Hospital	C CP
St. Bernards Medical Center	CP L T
St. Mary's Regional Medical Center	C CP E

Unity Health White County Medical Center	C CP E
Baptist Memorial Hospital - Jonesboro.....	CL CP
CHI St. Vincent North	C CP
Conway Regional Medical Center	C CP
Jefferson Regional Medical Center.....	CP E
Medical Center of South Arkansas, LLC....	C CP
Northwest Medical Center - Springdale....	C CP
Arkansas Children's Hospital.....	IM
Baptist Health Medical Center - Conway.....	CP
Saint Mary's Regional Medical Center.....	CP
White River Medical Center	CP

CALIFORNIA

Adventist Health and Rideout Hospital.....	C CP E L T CL CP
Adventist Health Bakersfield	C CP E L CL CP HF
Eisenhower Medical Center.....	A C L T CL CP HF TV
University of California... Bakersfield Heart Hospital ..	C CP E IM L T EP
Bakersfield Heart Hospital ..	C CP L T CP HF
California Pacific Medical Center.....	A C CP E L T
El Camino Health.....	A C CP L T TV
French Hospital Medical Center.....	A C CP L T TV
Palomar Medical Center	C CP E L T TV
Sutter Medical Center - Sacramento	A C E IM L T TV
Antelope Valley Hospital	C CP L T CP
Dignity Health St. Joseph's Medical Center	C CP E L T
Doctors Medical Center	C CP L T CP
Loma Linda University Medical Center.....	C E IM L T CP
Memorial Medical Center Modesto.....	C CP E T CP
NorthBay Medical Center.....	C CP E T CP
Pomona Valley Hospital Medical Center.....	C CP L T CP
Temecula Valley Hospital.....	C CP E T CP
UC San Diego Health System Sulpizio CV Center	A C E IM L T
University Of California Davis Medical Center.....	C CP E IM L T
Adventist Health Glendale	C E L T CP
Alta Bates Summit Medical Center	A C E L T
Hoag Memorial Hospital Presbyterian	A C E L T
Loma Linda University Medical Center - Murrieta	C E L T CP
Mercy General Hospital - Sacramento	A C E L T
Mills - Peninsula Medical Center..	A C E L T
Riverside Community Hospital	C CP L T
Saint Agnes Medical Center	A C E L T
St. Bernardine Medical Center.....	A C L T CP

Sutter Santa Rosa Regional Hospital.....	A C E L T
Tri-City Medical Center.....	A C CP L T
UC Irvine Health	C CP E L T
University of California San Francisco Medical Center.....	C E IM L T
White Memorial Medical Center..	C E L T CP
Adventist Health St. Helena	C E L T
Cedars - Sinai Health Systems	C IM L T
Community Memorial Hospital	C E L T
Desert Regional Medical Center	C CP L CP
Desert Valley Hospital.....	C CP E CP
Emanate Health Medical Center.....	C E L T
Fresno Heart and Surgical Hospital....	C E L T
Keck Medical Center of USC.....	G E L T
Los Robles Hospital & Medical Center	A C L T
Marian Regional Medical Center.....	A C L EP
MemorialCare Long Beach Medical Center.....	C IM L T
Salinas Valley Memorial Healthcare System	CP L T
Sharp Memorial Hospital.....	C E L T
St. John's Regional Medical Center..	A C L T
Torrance Memorial Medical Center ..	A C L T
Arrowhead Regional Medical Center	C CP E
Bakersfield Memorial Hospital.....	C L T
Community Hospital of the Monterey Peninsula	C L T
Emanuel Medical Center.....	C CP CP
Enloe Medical Center.....	C E T
Fresno Community Hospital and Medical Center.....	C E T
Garfield Medical Center.....	C E T
Good Samaritan Hospital.....	C L T
Huntington Hospital	C L T
John Muir Medical Center - Concord Campus.....	C L T
Kaiser Foundation Hospital Fontana ..	C E T
Kaiser Permanente Medical Center - San Francisco.....	C L T
Kaiser Permanente Medical Center - Santa Clara	C L T
Kaweah Delta Hospital District	C E T
Marin Health Medical Center	C L T
Memorialcare Saddleback Medical Center	C L T
Northridge Hospital Medical Center.....	C L T
PIH Health Good Samaritan Hospital.....	C L T
Providence Little Company of Mary Medical Center.....	C L T
Providence Mission Hospital	C L T
Providence Saint John's Health Center..	C L T
Providence St. Joseph Hospital	C L T
Santa Barbara Cottage Hospital.....	C L T
Santa Rosa Memorial Hospital	C L T
Scripps Memorial Hospital - La Jolla.....	C L T
Scripps Mercy Hospital - San Diego.....	C L T
Sequoia Hospital.....	A C T
Sharp Chula Vista Medical Center.....	C L T
Sharp Grossmont Hospital.....	C L T
Stanford Health Care.....	C E T
Stanford Health Care Valley Care	C E T
Sutter Delta Medical Center	G E CL
Washington Hospital.....	C E T
West Hills Hospital & Medical Center....	C L T
Children's Hospital of Los Angeles	E IM
Community Medical Center - Clovis.....	C E

Corona Regional Medical Center.....	C E
Dignity Health Dominican Hospital.....	C T
Glendale Memorial Hospital and Health Center.....	C L
Henry Mayo Newhall Hospital.....	C T
Kaiser Foundation Hospital	C E
Kaiser Permanente Irvine Medical Center...	C E
Kaiser Permanente Oakland Medical Center	C IM
Lakewood Regional Medical Center	C T
Lucile S. Packard Children's Hospital at Stanford University	E IM
MemorialCare Orange Coast Medical Center	C T
Palmdale Regional Medical Center.....	C E
PIH Health Hospital - Whittier.....	C T
Providence Saint Joseph Medical Center..	C T
Providence St. Jude Medical Center.....	C T
Providence St. Mary Medical Center	C CP
Riverside University Health System Medical Center	C E
San Antonio Regional Hospital	T CP
Shasta Regional Medical Center.....	C T
Southern California Hospital at Culver City	C E
Sutter Roseville Medical Center.....	C E
University Of California - Santa Monica	C E
Valley Presbyterian Hospital	C E
West Anaheim Medical Center	C CL
Adventist Medical Center - Hanford	E
Adventist Health - Simi Valley.....	C
Adventist Health Simi Valley	CP
Alameda Health System.....	C
Barstow Community Hospital.....	CP
California Hospital Medical Center.....	C
Children's Hospital of Orange County	IM
Chino Valley Medical Center	C
Corona Regional Medical Center	CP
Dameron Hospital Association	C
Dignity Health.....	C
Dignity Health Mercy Medical Center Redding...	C
El Centro Regional Medical Center.....	E
Fountain Valley Regional Hospital.....	C
Hollywood Presbyterian Hospital.....	C
John F. Kennedy Memorial Hospital	C
John Muir Medical Center - Walnut Creek Campus.....	C
Kaiser Foundation - Roseville Medical Center..	C
Kaiser Foundation Hospital South Sacramento...	C
Kaiser Permanente - Vallejo Medical Center...	C
Kaiser Permanente Fremont Medical Center..	C
Kaiser Permanente Medical Center Health Sciences	E
Kaiser Permanente Modesto Medical Center ..	C
Kaiser Permanente Orange County - Anaheim Medical Center	E
Kaiser Permanente Sacramento Medical Center	C
Kaiser Permanente San Rafael Medical Center	C
Kaiser Permanente Walnut Creek.....	C
Kaiser Redwood City Medical Center.....	C
Los Alamitos Medical Center.....	C
Marshall Medical Center	E
Mercy Medical Center Merced	C
Methodist Hospital of South CA	C
Oroville Hospital	C

PIH Health Hospital - Downey.....	C
Pioneers Memorial Healthcare District	C
Pioneers Memorial Hospital	CP
Placentia Linda Hospital	C
Providence Holy Cross Medical Center	C
Providence Tarzana Medical Center	C
Queen of the Valley Medical Center	C
Rady Children's Hospital - San Diego	IM
Rancho Spring Medical Center.....	E
Regional Medical Center - San Jose	C
Ridgecrest Regional Hospital.....	E
San Joaquin General Hospital.....	E
San Ramon Regional Medical Center	C
Santa Clara Valley Health and Hospital System..	T
Santa Teresa Community Hospital	C
Sherman Oaks Hospital	C
Sierra View District Hospital	C
St. Joseph Hospital.....	C
St. Mary Medical Center	C
St. Mary's Medical Center	C
St. Rose Hospital.....	C
Sutter Amador Surgery Center.....	E
Sutter Solano Medical Center	E
UCSF Benioff Children's Hospitals, Oakland..	IM
USC Verdugo Hills Hospital	C
Valley Children's Hospital.....	IM

COLORADO

Medical Center of Aurora	A C CP L T CP HF TV
UCH - Memorial Hospital.....	C CP E L T CP EP TV
Rose Medical Center	A C CP L AF CL CP
National Jewish/SCL Saint Joseph Hospital..	C CP L T CP TV
Medical Center of the Rockies.....	A C CP E L T
Porter Adventist Hospital	A C CP L AF CP HF
Saint Mary's Hospital and Regional Medical Center.....	A C CP L T CP
St. Anthony Hospital.....	A C CP L T CP
University of Colorado Hospital Authority.....	A C CP E L T
Valley View Hospital	A C CP E L
Lutheran Medical Center.....	A C CP CP
North Colorado Medical Center...	CP L T TV
Parkview Medical Center.....	C CP L T
Penrose Hospital	C CP L T
Boulder Community Health	C E L T
Parker Adventist Hospital.....	C CP CP
Platte Valley Medical Center	C CP CP
SCL Health Good Samaritan Medical Center	C CP CP
Swedish Medical Center	C CP T
Castle Rock Adventist	C CP
Highlands Ranch Hospital	C CP
Littleton Adventist Hospital	C CP
Mercy Regional Medical Center	C CP
Sky Ridge Medical Center.....	C CP
St. Anthony North Health Campus.....	C CP CP
St. Francis Medical Center	C CP
Avista Adventist Hospital	C CP
Community Hospital	C E
Longmont United Hospital.....	C CP
McKee Medical Center	CP
Poudre Valley Hospital	CP

REGISTRIES		ACCREDITATIONS		AWARDS	
A AFib Ablation Registry™	IM IMPACT Registry®	AF Atrial Fibrillation	HF Heart Failure	▲ Chest Pain - MI Registry™ Award Platinum	
C CathPCI Registry™	L LAOA Registry™	CL Cardiac Cath Lab	TV Transcatheter Valve	▲ Chest Pain - MI Registry™ Award Gold	
CP Chest Pain - MI Registry™	T STS/ACC TVT Registry™	CP Chest Pain Center		▲ Chest Pain - MI Registry™ Award Silver	
E EP Device Implant Registry™		EP Electrophysiology		◆ HeartCARE Center	

Contract status current as of June 1, 2022. Visit [CardioSmart.org/FindYourHeartHome](https://www.cardiosmart.org/FindYourHeartHome) for the most current information.

Continues on next page



Presbyterian/St. Luke's Medical Center C IM
Children's Hospital Colorado IM
North Suburban Medical Center C
St. Elizabeth Hospital..... CP
UCHealth Longs Peak Hospital CP
UCHealth Memorial Hospital North..... CP

CONNECTICUT

Yale New Haven Hospital..... A C IM L T TV
Hartford Hospital A C E L T
St. Francis Hospital & Medical Center..... A C E L T
Bridgeport Hospital..... A C L T
Danbury Hospital..... C E L T
St. Vincent's Medical Center..... C E L T
Stamford Hospital C E L T
Health Sciences Library A C E
Trinity Health Of New England..... C E T
Waterbury Hospital E IM
Connecticut Children's Medical Center..... C E
Norwalk Hospital..... C E
The Hospital of Central Connecticut C E
University of CT Health Center/ John Dempsey Hospital C T
Greenwich Hospital C
Lawrence & Memorial Hospital C
Midstate Medical Center..... E
William W. Backus Hospital..... E

DELAWARE

Christiana Care Health System C CP L T CL CP ▲
Bayhealth Hospital Kent Campus C E L T
Beebe Healthcare C E L T
St. Francis Hospital A C CP E
Bayhealth Medical Center EP TV
Kent Campus..... EP TV
Bayhealth Hospital Sussex Campus..... C E
Nanticoke Memorial Hospital..... C
Nemours Children's Health..... IM

DISTRICT OF COLUMBIA

The George Washington University Hospital..... A C CP E L T ▲
MedStar Washington Hospital Center A C E L T
Children's National Medical Center..... IM
Howard University Hospital C

FLORIDA

AdventHealth Tampa, Pepin Heart Institute..... C CP E L T CL CP EP HF TV
AdventHealth Ocala..... C E L T CL CP EP HF TV
Manatee Memorial Hospital C CP E L T CP TV ▲
AdventHealth Carrollwood... C CP E CL CP HF
AdventHealth Orlando A C E IM L T TV

AdventHealth Wesley Chapel..... C CP E CL CP HF
AdventHealth Zephyrhills..... C CP E CL CP HF
St. Joseph's & St. Joseph's Children's Hospitals..... A C E IM L T TV
AdventHealth Dade City..... C E CL CP HF
AdventHealth North Pinellas C CP E CL CP HF
Baptist Hospital of Miami, Inc. A C L T EP TV

Bayfront Health Saint Petersburg..... C CP L T CL ▲
HCA Florida Osceola Hospital .. A C CP L T CP
Morton Plant Hospital..... A C E L T TV
Mount Sinai Medical Center..... C CP L T CP ▲
Physicians Regional HS - Pine Ridge..... A C CP L T CP
Sarasota Memorial Hospital..... A C E L T TV
UF Health Jacksonville C CP E L T ▲
AdventHealth Daytona Beach..... C E L T TV
AdventHealth Waterman..... A C CP E T
Ascension St. Vincent's Riverside C E L T TV
Baptist Health System A C E L T
Broward Health Medical Center .. C E L T TV
Cleveland Clinic Indian River Hospital..... C CP E L T
HCA Florida JFK Medical Hospital A C L T CP
HCA Florida Memorial Hospital... A C L T CP
HCA Florida North Florida Hospital..... C L T CP TV
HCA Florida West Hospital C CP L CP ▲
Holy Cross Hospital A C E L T
Jackson Memorial Hospital..... C E IM L T

Lakeland Regional Medical Center C E L T CP
Lee Health - HealthPark Medical Center A C E L T
Naples Community Hospital C CP L T TV
UF Health Shands Hospital C E IM T CP
University of Miami Hospital and Clinics A C E L T
Winter Haven Hospital A C E L T
AdventHealth Celebration..... A C CP E
AdventHealth Sebring CL CP HF
Ascension Sacred Heart Bay C E L T
Ascension Sacred Heart Pensacola... C E L T
Cleveland Clinic Florida Weston..... C E L T
Cleveland Clinic Martin Health C E L T
Flagler Hospital A C L T
HCA Florida Aventura Hospital A C L T
HCA Florida Fort Walton Beach - Destin Hospital..... C L T CP
HCA Florida Lake Monroe Hospital... C CP L T
HCA Florida Largo Hospital..... A C L T
HCA Florida Northside Hospital..... A C L T
HCA Florida Orange Park Hospital .. A C L T
Jupiter Medical Center C E L T
Memorial Regional Hospital/ South Broward Hospital..... A C L T

Orlando Health..... C IM L T
ShorePoint Health Port Charlotte..... C L T CP
South Miami Hospital..... A C L T
Tallahassee Memorial Hospital..... C L T CP
Tampa General Hospital..... C L T AF
UF Health Leesburg Hospital..... C CP T CP
Wellington Regional Medical Center .. C CP CP ▲
AdventHealth Sebring C CP E
Baptist Hospital C L T

Bethesda Hospital, Baptist Health South Florida..... C L T
Boca Raton Regional Hospital..... C L T
Bravera Health Seven Rivers..... C CP HF
Delray Medical Center..... C L T
HCA Florida Bayonet Point Hospital... C L T
HCA Florida Blake Hospital..... C L T
HCA Florida Brandon Hospital..... C L T
HCA Florida Citrus Hospital..... C L T
HCA Florida Fawcett Hospital C L T
HCA Florida Kendall Hospital..... C L T
HCA Florida Lawnwood Hospital C L T
HCA Florida Mercy Hospital..... C L T
HCA Florida Ocala Hospital..... C L T
HCA Florida Westside Hospital C L T
Holmes Regional Medical Center..... C L T
Lakewood Ranch Medical Center..... C CP CP
Mayo Clinic..... C L T
North Okaloosa Medical Center..... C CP CP
Palm Beach Gardens Medical Center... C L T
Palmetto General Hospital..... C L T
Rockledge Regional Medical Center... C L T
The Villages Regional Hospital C CP CP
Venice Regional Bayfront Health..... C L T

Advent Health New Smyrna Beach..... C E
AdventHealth Altamonte Springs C E
AdventHealth Apopka C E
AdventHealth Deland..... C E
AdventHealth East Orlando..... C E
AdventHealth Fish Memorial..... C E
AdventHealth Heart of Florida..... C E

Ascension Sacred Heart on the Emerald Coast..... C E
Ascension St. Vincent's Clay County..... C E
Ascension St. Vincent's Southside..... C E
Bartow Regional Medical Center..... C CP
Bayfront Health Brooksville..... CP CP
Bayfront Health Spring Hill..... CP CP
Broward Health Imperial Point Medical Center..... C E
Coral Springs Medical Center..... C E

Florida Medical Center - a Campus of North Shore..... C L
Halifax Health Medical Center C T
HCA Florida Capital Hospital..... C CP
HCA Florida Gulf Coast Hospital..... C CP
HCA Florida Lake City Hospital..... C E
HCA Florida Northwest Hospital..... C L

HCA Florida Oak Hill Hospital C T
Jackson North Medical Center C E
Jackson South Community Hospital..... C E
Lee Health - Gulf Coast Medical Center... C E
Lower Keys Medical Center C CP
Mease Countryside Hospital..... C E
Morton Plant North Bay Hospital..... C E
North Broward Medical Center..... C E
Oviedo Medical Center C CP
Parrish Medical Center C E
Physicians Regional HS - Collier..... C CP
Sebastian River Medical Center..... C CP
South Florida Baptist Hospital..... C E
South Miami Hospital EP TV
St. Anthony's Health Care..... C E
St. Cloud Regional Medical Center C CP
St. Joseph's Hospital - North C E
St. Joseph's Hospital - South..... C E
Wolfson Children's Hospital E IM
AdventHealth Palm Coast C
Bayfront Health Punta Gorda..... CP
Cape Canaveral Hospital..... C
CCC Outpatient Cath Lab C
Cleveland Clinic Tradition Hospital..... C
Dr. P. Phillips Hospital..... C
Good Samaritan Medical Center..... C
HCA Florida Englewood Hospital C
HCA Florida Highlands Hospital..... C
HCA Florida Palms West Hospital C
HCA Florida Pasadena Hospital..... C
HCA Florida Poinciana Hospital..... C
HCA Florida Putnam Hospital C
HCA Florida Sarasota Doctors Hospital..... C
HCA Florida South Shore Hospital..... C
HCA Florida South Tampa Hospital C
HCA Florida St. Lucie Hospital..... C
HCA Florida Trinity Hospital..... C

Health Central..... C
Heart and Rhythm Institute of Trinity E
Jackson West Medical Center..... C
Joe DiMaggio Children's Hospital IM
Johns Hopkins All Children's Hospital, Inc. IM
Melbourne Regional Medical Center C
Memorial Hospital West/ South Broward Hospital..... C
Memorial Regional Hospital HF
Miami Children's Health System IM
Nemours Children's Hospital IM
North Shore Medical Center C
Ocala Health..... C CP
Palm Bay Hospital..... C
Physicians Regional Medical Center - Collier Boulevard CP
Santa Rosa Medical Center CP
Sarasota Memorial Hospital - Venice C
South Lake Hospital..... C
South Miami Ambulatory Surgery Center C
South Seminole Hospital..... C
West Marion Community Hospital CP

GEORGIA

AU Medical Center, Inc. A C E L T CP EP
Piedmont Augusta C CP E L T CP ▲
St. Joseph's Hospital C CP E L T CP ▲
Hamilton Medical Center C CP E T CP ▲
Medical Center - Navicent Health .. C E L T CP
Memorial Health University Medical Center C CP L T CP
Saint Francis - Emory Healthcare .. C E T CL CP
South Georgia Medical Center C CP E T ▲
St. Mary's Health Care Systems..... C CP E CP ▲
AdventHealth Redmond..... C CP L T
Phoebe Putney Memorial Hospital... C E L T
Piedmont Athens Regional C L T CP
Piedmont Fayette Hospital..... C CP CP ▲

Piedmont Henry Hospital..... C CP CP ▲
Piedmont Hospital C L T CP
Piedmont Newnan Hospital C CP CP ▲
Wellstar Kennestone Regional Medical Center..... C E L T
Emory Saint Joseph's Hospital of Atlanta..... C L T
Emory University Hospital..... C L T
Emory University Hospital Midtown C L T
Floyd Medical Center..... C E CP
Northeast Georgia Health System C L T
Northside Hospital - Gwinnett C L T
Southern Regional Medical Center..... C CP CP
Atlanta Medical Center..... C E
Cartersville Medical Center..... C CP
Children's Healthcare of Atlanta E IM
Coliseum Medical Centers..... C L
East Georgia Regional Medical Center..... C E
Eastside Medical Center C CP
Grady Health System..... C E
Houston Medical Center C E
Memorial Satilla Health..... C CP
Piedmont Rockdale Hospital C CP
Southeast Georgia Health System..... C E
Spalding Regional Hospital C E
Tanner Medical Center..... C CP
Tanner Medical Center of Villa Rica..... C CP
Tift Regional Medical Center..... C E
Union General Hospital CP HF
Wellstar Cobb Hospital..... C E
WellStar North Fulton Hospital C E
Wellstar Paulding Hospital..... C E
WellStar West Georgia Medical Center C E
Adventist Health System Georgia C
AdventHealth Gordon..... C
Atlanta Medical Center South C

Continues on next page

REGISTRIES

A AFib Ablation Registry™
C CathPCI Registry
CP Chest Pain - MI Registry™
E EP Device Implant Registry™
IM IMPACT Registry®
L LAAO Registry™
T STS/ACC TVT Registry™

ACCREDITATIONS

AF Atrial Fibrillation
CL Cardiac Cath Lab
CP Chest Pain Center
EP Electrophysiology
HF Heart Failure
TV Transcatheter Valve

AWARDS

▲ Chest Pain - MI Registry™ Award Platinum
▲ Chest Pain - MI Registry™ Award Gold
▲ Chest Pain - MI Registry™ Award Silver
♦ HeartCARE Center

Contract status current as of June 1, 2022. Visit [CardioSmart.org/FindYourHeartHome](https://www.cardiosmart.org/FindYourHeartHome) for the most current information.

Improving Heart Failure Care Together

Coordinated care for post-discharge heart failure treatment is essential to your quality of life. That's why we advocate the partner in care approach. Find dedicated patient care champions at facilities, outpatient clinics, and cardiology practices that display the ACC Heart Failure Accreditation seals.

Visit [CardioSmart.org](https://www.cardiosmart.org) for:

- Tools to help you and your heart failure care team manage your condition
- Tips for healthy living
- Information to help you research and compare all the heart care services offered at your local hospitals

[cardiosmart.org/findyourheartahome](https://www.cardiosmart.org/findyourheartahome)

ACC ACCREDITATION SERVICES™
AMERICAN COLLEGE of CARDIOLOGY®

Midwest: Lutheran Hospital of Indiana, Fort Wayne, IN; Outpatient Services Partner: Lutheran Hospital Advanced Heart Failure Clinic, Fort Wayne, IN

South: Baptist Health Louisville, Louisville, KY; Outpatient Services Partner: Baptist Health Louisville Heart Failure Clinic, Louisville, KY; King's Daughters Medical Center, Ashland, KY; Outpatient Services Partner: King's Daughters Heart Failure Clinic, Ashland, KY

Medical City Heart and Spine Hospitals, Dallas, TX; Outpatient Services Partner: Medical City Advanced Heart Failure Center, Dallas, TX

Novant Health New Hanover Regional Center, Wilmington, NC; Outpatient Services Partner: Novant Health Heart & Vascular Institute - Wilmington Main, Wilmington, NC

West: Eisenhower Medical Center, Rancho Mirage, CA; Outpatient Services Partner: Glickman Cardiac Care Clinic, Rancho Mirage, CA

ACCREDITED HEART FAILURE WITH OUTPATIENT SERVICES

OUTPATIENT SERVICES HEART FAILURE PARTNER IN CARE

Displayed by facilities that achieve Heart Failure Accreditation and demonstrate a partnership with post-discharge care providers.

Displayed by outpatient clinics and cardiology practices that partner with an ACC Accredited Heart Failure facility.



AMERICAN COLLEGE of CARDIOLOGY®

©2022 American College of Cardiology R22103



Coffee Regional Medical Center.....	C	AMITA Health Adventist Medical Center Hinsdale.....	C CP E L ▲	West Suburban Medical Center.....	C CP CP	
Doctors Hospital - Augusta.....	C	Northwestern Medicine McHenry Hospital.....	C CP L T ▲	Advocate Condell Medical Center.....	C L	
East Georgia Regional Medical Center.....	CP	Springfield Memorial Hospital.....	C CP L T ▲	Advocate Good Shepherd Hospital.....	C T	
Emory Decatur Hospital.....	C	Trinity Medical Center - Rock Island.....	C CP L T ▲	AMITA Health Adventist Medical Center Bolingbrook.....	C CP	
Emory Johns Creek Hospital.....	C	University of Chicago Medical Center.....	C CP E L T	AMITA Health Saint Francis Hospital of Evanston.....	C E	
Fairview Park Hospital.....	C	AMITA Health Adventist Medical Center La Grange.....	C CP E ▲	AMITA Health Saint Joseph Hospital Chicago.....	C E	
John D. Archbold Memorial Hospital.....	C	AMITA Health Alexian Brothers Medical Center.....	C E L T	AMITA Health Saint Joseph Hospital Elgin.....	C	
Meadows Regional Medical Center.....	C	AMITA Health Resurrection Medical Center Chicago.....	C E L T	AMITA Health Saints Mary and Elizabeth Medical Center.....	C E	
Northeast Georgia Medical Center Braselton.....	C	AMITA Health Saint Joseph Medical Center.....	C E L T	AMITA Health St. Alexius Medical Center.....	C CP	
Northside Hospital - Atlanta.....	C	Blessing Hospital.....	C L T CP	Anderson Hospital.....	C CP	
Northside Hospital - Cherokee.....	C	Carle BroMenn Medical Center.....	C CP CP ▲	Franciscan Health Olympia Fields.....	C CP	
Northside Hospital - Forsyth.....	C	Highland Park Hospital.....	A C L T	Genesis Medical Center, Silvis.....	C E	
Piedmont Columbus Regional Midtown.....	C	HSHS St. Elizabeth's Hospital.....	C L T CP	Gottlieb Memorial Hospital.....	C E	
Piedmont Mountainside Hospital.....	CP	NorthShore University Health System.....	A C L T	Heartland Regional Medical Center.....	C CP	
Piedmont Walton Hospital.....	CP	Northwest Community Hospital.....	C E L T	Mercyhealth Javon Bea Hospital.....	C CP	
Polk Medical Center.....	CP	OSF HealthCare Heart of Mary Medical Center.....	C E T CP	Mount Sinai Hospital.....	C E	
Upson Regional Medical Center.....	C	OSF Saint Joseph Medical Center.....	C CP E ▲	Sarah Bush Lincoln Health Center.....	C E	
Wellstar Douglas Hospital.....	C	Protestant Memorial Medical Center.....	C CP CP ▲	Advocate Children's Hospital Oak Lawn.....	IM	
HAWAII					Advocate South Suburban Hospital.....	C
Straub Medical Center.....	C E IM L T	Rush University Medical Center.....	A C L T	Advocate Trinity Hospital.....	C	
The Queen's Medical Center.....	C E L T TV	University of Illinois Medical Center at Chicago.....	C E L T	Alton Memorial Hospital.....	C	
Pali Momi Medical Center.....	A C E	Advocate Christ Medical Center.....	C L T	FHN Memorial Hospital.....	C	
Hilo Medical Center.....	C E	Advocate Good Samaritan Hospital.....	C L T	Gateway Regional Medical Center.....	C	
Kaiser Permanente - Moanalua Medical Center.....	C E	Advocate Illinois Masonic Medical Center.....	C L T	Glenbrook Hospital.....	C	
Maui Memorial Medical Center.....	C	Advocate Lutheran General Hospital.....	C L T	Humboldt Park Health.....	C	
North Hawaii Community Hospital.....	E	Advocate Sherman Hospital.....	C L T	Jersey Community Hospital District.....	E	
IDAHO					John H. Stroger Jr Hospital of Cook County Hospital.....	T
Saint Alphonsus Regional Medical Center.....	A C CP E L T CP ▲	AMITA Health Adventist Medical Center GlenOaks.....	C CP E	Katherine Shaw Bethea Hospital.....	C	
Portneuf Medical Center.....	C CP L T CP	AMITA Health Mercy Medical Center.....	C E L	Lurie Children's Hospital of Chicago.....	IM	
St. Alphonsus Medical Center - Nampa.....	C CP E CP ▲	AMITA Health St. Mary's Hospital.....	C E CP	Northwestern Delnor Hospital.....	C	
St. Luke's.....	A C E L T	Carle Foundation Hospital.....	C L T	Northwestern Medicine Kishwaukee Hospital.....	C	
Eastern Idaho Regional Medical Center.....	C CP L T	Elmhurst Memorial Healthcare.....	C CP E	Red Bud Regional Hospital.....	CP	
Kootenai Health.....	A C L T	Good Samaritan Hospital.....	C CP ▲	SSM Health Good Samaritan Hospital - MT Vernon.....	CP	
St. Joseph Regional Medical Center.....	C CP E	MacNeal Hospital.....	C CP E	St. Mary's Hospital.....	C	
HCA - West Valley Medical Center.....	C CP	Memorial Hospital Shiloh.....	C CP ▲	Swedish Covenant Hospital.....	C	
Idaho Falls Community Hospital.....	C	Northwestern Central DuPage Hospital.....	C L T	Vista Medical Center.....	C	
St. Luke's Magic Valley Regional Medical Center.....	C	Northwestern Lake Forest Hospital.....	C CP ▲	INDIANA		
ILLINOIS					Lutheran Hospital of Indiana.....	A C CP L T AF CL CP HF TV ◆
OSF HealthCare Saint Francis Medical Center.....	A C CP E IM L T ▲	Northwestern Medicine Huntley Hospital.....	C CP ▲	Indiana University Health Methodist Hospital.....	C CP E IM L T CL EP ◆	
Riverside Health Care.....	C CP E L T CP HF ▲	Northwestern Memorial Hospital.....	C L T	Parkview Heart Institute.....	A C E L T AF EP HF ◆	
Loyola University Medical Center.....	A C CP E L T ▲	Palos Health.....	C L T	Columbus Regional Hospital.....	C CP E L T CP ▲	
Edward Hospital.....	C CP E L T ▲	Prairie Heart Institute at St. John's Hospital.....	C L T	Northwest Health La Porte.....	A C CP CL CP EP ▲	
Memorial Hospital Carbondale.....	C CP E L T ▲	Rush Oak Park Hospital.....	C CP ▲	Deaconess Gateway Heart Hospital.....	C CP E L T ▲	
OSF Saint Anthony Medical Center.....	C CP E L T ▲	Silver Cross Hospital.....	C E T	Franciscan Health Indianapolis.....	C CP L T TV ▲	
Rush - Copley Hospital.....	A C CP E CP ▲	UnityPoint Health Methodist.....	C CP T	Indiana University Health Arnett Hospital.....	C CP E T CP ▲	
		UnityPoint Health Methodist Proctor.....	C CP ▲			

REGISTRIES		ACCREDITATIONS		AWARDS	
A AFib Ablation Registry™	IM IMPACT Registry®	AF Atrial Fibrillation	HF Heart Failure	▲ Chest Pain - MI Registry™ Award Platinum	
C CathPCI Registry	L LAAO Registry™	CL Cardiac Cath Lab	TV Transcatheter Valve	▲ Chest Pain - MI Registry™ Award Gold	
CP Chest Pain - MI Registry™	T STS/ACC TVT Registry™	CP Chest Pain Center		▲ Chest Pain - MI Registry™ Award Silver	
E EP Device Implant Registry™		EP Electrophysiology		◆ HeartCARE Center	

Contract status current as of June 1, 2022. Visit [CardioSmart.org/FindYourHeartHome](https://www.heart.org/FindYourHeartHome) for the most current information.

Indiana University Health Ball Memorial Hospital.....	C CP E L T ▲	MercyOne Siouxland Medical Center.....	C CP E T ▲
Indiana University Health Bloomington.....	C CP E L T ▲	Genesis Medical Center, Davenport.....	C E L T
Ascension St. Vincent Evansville.....	C CP E L T	Iowa Methodist Medical Center.....	C CP L T
Northwest Health - Porter.....	C L T CP TV	Mercy Iowa City.....	C CP E ▲
Saint Joseph Health System.....	A C E L T	MercyOne Des Moines Medical Center.....	A C L T
Union Hospital.....	C E L T CP	MercyOne Waterloo Medical Center.....	C CP E CP
Ascension St. Vincent Heart Center.....	C E L T	University of Iowa Hospitals and Clinics.....	C IM L T
Ascension St. Vincent Hospital.....	C E IM L	The Finley Hospital.....	C CP ▲
Clark Memorial Hospital.....	C CP E CP	Trinity Medical Center - Bettendorf.....	C CP ▲
Community Hospital.....	C E L T	Trinity Regional Medical Center.....	C CP ▲
Deaconess Hospital.....	C CP E ▲	UnityPoint Health, St Luke's Sioux City.....	C CP ▲
Elkhart General Hospital.....	C T CL TV	Iowa Lutheran Hospital.....	C CP
Goshen Hospital.....	C CP E ▲	MercyOne Dubuque Medical Center.....	C T
Indiana University Health North Hospital.....	C CP E ▲	Ottumwa Regional Health Center.....	C E
Indiana University Health Saxony Hospital.....	C CP E ▲	CHI Health Mercy.....	C
Indiana University Health West Hospital.....	C CP E ▲	Mercy Medical Center.....	T
Reid Health.....	C E L T	MercyOne Clinton Medical Center.....	C
KANSAS			
Advent Health Shawnee Mission.....	A C CP E L T ▲	Advent Health Shawnee Mission.....	A C CP E L T ▲
Hays Medical Center.....	C CP E L T CP ▲	Hays Medical Center.....	C CP E L T CP ▲
The University of Kansas Health System.....	A C CP E L T ▲	The University of Kansas Health System.....	A C CP E L T ▲
Overland Park Regional Medical Center.....	A C CP E L ▲	Overland Park Regional Medical Center.....	A C CP E L ▲
Salina Regional Health Center.....	C E L T CP HF	Salina Regional Health Center.....	C E L T CP HF
Stormont Vail Health.....	C CP L T TV ▲	Stormont Vail Health.....	C CP L T TV ▲
Olathe Medical Center.....	C CP L T ▲	Olathe Medical Center.....	C CP L T ▲
Providence Medical Center.....	C CP E CP ▲	Providence Medical Center.....	C CP E CP ▲
University of KansasHealth System St. Francis Campus.....	C CP E CP ▲	University of KansasHealth System St. Francis Campus.....	C CP E CP ▲
Ascension Via Christi Hospitals in Wichita.....	C E L T	Ascension Via Christi Hospitals in Wichita.....	C E L T
Wesley Medical Center.....	C CP L T	Wesley Medical Center.....	C CP L T
Western Plains Medical Center.....	C E CP	Western Plains Medical Center.....	C E CP
AdventHealth South Overland Park.....	C CP	AdventHealth South Overland Park.....	C CP
Ascension Via Christi Hospital at Manhattan.....	C E	Ascension Via Christi Hospital at Manhattan.....	C E
Menorah Medical Center.....	C CP	Menorah Medical Center.....	C CP
Newman Regional Health.....	C E	Newman Regional Health.....	C E
St. Catherine Hospital.....	C CP	St. Catherine Hospital.....	C CP
St. Luke's South Hospital.....	C E	St. Luke's South Hospital.....	C E
Via Christi Hospital - Pittsburg KS.....	C E	Via Christi Hospital - Pittsburg KS.....	C E
Kansas Medical Center.....	E	Kansas Medical Center.....	E
Lawrence Memorial Hospital.....	C	Lawrence Memorial Hospital.....	C
Wesley Woodlawn Hospital and ER.....	C	Wesley Woodlawn Hospital and ER.....	C
William Newton Memorial Hospital.....	C	William Newton Memorial Hospital.....	C
KENTUCKY			
Baptist Health Lexington.....	C CP E L T CL CP EP TV ▲ ◆	Baptist Health Lexington.....	C CP E L T CL CP EP TV ▲ ◆
Baptist Health Paducah.....	C CP E L T CL CP TV ▲ ◆	Baptist Health Paducah.....	C CP E L T CL CP TV ▲ ◆
Kings Daughters Medical Center.....	C E L T CP HF TV ◆	Kings Daughters Medical Center.....	C E L T CP HF TV ◆
Jewish Hospital.....	C CP E L T CP ▲	Jewish Hospital.....	C CP E L T CP ▲
Norton Audubon.....	C L T CL CP TV ◆	Norton Audubon.....	C L T CL CP TV ◆
Pikeville Medical Center.....	C CP L T CL CP ▲	Pikeville Medical Center.....	C CP L T CL CP ▲
St. Joseph Hospital.....	A C CP E L T CL	St. Joseph Hospital.....	A C CP E L T CL
Baptist Health Louisville.....	C CP T CP HF ▲	Baptist Health Louisville.....	C CP T CP HF ▲
Saint Elizabeth Healthcare Edgewood.....	C CP E L T ▲	Saint Elizabeth Healthcare Edgewood.....	C CP E L T ▲
University of Kentucky.....	C CP E IM L T	University of Kentucky.....	C CP E IM L T
IOWA			
St. Luke's Hospital.....	C CP L T CP TV ▲	St. Luke's Hospital.....	C CP L T CP TV ▲
Allen Memorial Hospital.....	C CP T CP ▲	Allen Memorial Hospital.....	C CP T CP ▲
MercyOne North Iowa Medical Center.....	A C CP E T	MercyOne North Iowa Medical Center.....	A C CP E T

Ephraim McDowell Regional Medical Center.....	C CP E CP ▲	Ephraim McDowell Regional Medical Center.....	C CP E CP ▲
Medical Center at Bowling Green.....	C E L T CP	Medical Center at Bowling Green.....	C E L T CP
Norton Hospital.....	C L T CL CP	Norton Hospital.....	C L T CL CP
Baptist Health Corbin.....	C CP CP ▲	Baptist Health Corbin.....	C CP CP ▲
Mercy Health Lourdes Hospital.....	C E L T	Mercy Health Lourdes Hospital.....	C E L T
Saint Joseph East.....	C CP E CL	Saint Joseph East.....	C CP E CL
Baptist Health Hardin.....	C CP ▲	Baptist Health Hardin.....	C CP ▲
Harrison Memorial Hospital.....	C E CP	Harrison Memorial Hospital.....	C E CP
Highlands ARH Regional Medical Center.....	C E CP	Highlands ARH Regional Medical Center.....	C E CP
Lake Cumberland Regional Hospital.....	C E CP	Lake Cumberland Regional Hospital.....	C E CP
Meadowview Regional Medical Center.....	C E CP	Meadowview Regional Medical Center.....	C E CP
Norton Brownsboro Hospital.....	C CL CP	Norton Brownsboro Hospital.....	C CL CP
Owensboro Health Regional Hospital.....	C L T	Owensboro Health Regional Hospital.....	C L T
Saint Joseph London.....	C CP E	Saint Joseph London.....	C CP E
St. Claire Regional Medical Center.....	C CP E	St. Claire Regional Medical Center.....	C CP E
T. J. Samson Community Hospital.....	C E CP	T. J. Samson Community Hospital.....	C E CP
Baptist Health Deaconess Madisonville, Inc.....	C E	Baptist Health Deaconess Madisonville, Inc.....	C E
Clark Regional Medical Center.....	C E	Clark Regional Medical Center.....	C E
Frankfort Regional Medical Center.....	CP HF	Frankfort Regional Medical Center.....	CP HF
Georgetown Community Hospital.....	C CP	Georgetown Community Hospital.....	C CP
Greenview Regional Hospital.....	C CP	Greenview Regional Hospital.....	C CP
Hazard ARH Regional Medical Center.....	C E	Hazard ARH Regional Medical Center.....	C E
Jackson Purchase Medical Center.....	E CP	Jackson Purchase Medical Center.....	E CP
Baptist Health Richmond.....	C	Baptist Health Richmond.....	C
Bluegrass Community Hospital.....	CP	Bluegrass Community Hospital.....	CP
Bourbon Community Hospital.....	CP	Bourbon Community Hospital.....	CP
CHI Saint Joseph Health System, St. Joseph Berea.....	CP	CHI Saint Joseph Health System, St. Joseph Berea.....	CP
Clark Regional Medical Center.....	CP	Clark Regional Medical Center.....	CP
Fleming County Hospital.....	CP	Fleming County Hospital.....	CP
Logan Memorial Hospital.....	CP	Logan Memorial Hospital.....	CP
Murray Calloway County Hospital.....	IM	Murray Calloway County Hospital.....	IM
Norton Children's Hospital.....	CP	Norton Children's Hospital.....	CP
Norton Women's & Children's Hospital.....	CP	Norton Women's & Children's Hospital.....	CP
Spring View Hospital.....	CP	Spring View Hospital.....	CP
St. Mary & Elizabeth Hospital.....	C	St. Mary & Elizabeth Hospital.....	C
Three Rivers Medical Center.....	CP	Three Rivers Medical Center.....	CP
University of Louisville Hospital.....	C	University of Louisville Hospital.....	C
LOUISIANA			
CHRISTUS St. Patrick Hospital.....	C CP L T CP HF TV ▲ ◆	CHRISTUS St. Patrick Hospital.....	C CP L T CP HF TV ▲ ◆
CHRISTUS St. Frances Cabrini Hospital.....	C CP L T CL CP HF ◆	CHRISTUS St. Frances Cabrini Hospital.....	C CP L T CL CP HF ◆
Ochsner Clinic Foundation.....	A C E IM L T EP	Ochsner Clinic Foundation.....	A C E IM L T EP
St. Tammany Health System.....	C CP E T CP TV ▲	St. Tammany Health System.....	C CP E T CP TV ▲
CHRISTUS Shreveport Bossier Health System.....	C CP L T CP TV	CHRISTUS Shreveport Bossier Health System.....	C CP L T CP TV
Ochsner - LSU Health Shreveport.....	A C CP E L T	Ochsner - LSU Health Shreveport.....	A C CP E L T
Our Lady of The Lake Regional Medical Center.....	C CP L T HF TV	Our Lady of The Lake Regional Medical Center.....	C CP L T HF TV
St. Francis Medical Center.....	C CP L T CP ▲	St. Francis Medical Center.....	C CP L T CP ▲
Willis Knighton Medical Center.....	A C E L T TV	Willis Knighton Medical Center.....	A C E L T TV
East Jefferson General Hospital.....	C E T HF TV	East Jefferson General Hospital.....	C E T HF TV
Ochsner Lafayette General Medical Center.....	C CP L T ▲	Ochsner Lafayette General Medical Center.....	C CP L T ▲
Our Lady of Lourdes Heart Hospital.....	C CP L T TV	Our Lady of Lourdes Heart Hospital.....	C CP L T TV
Terrebonne General Health System.....	C CP E L T	Terrebonne General Health System.....	C CP E L T
Tulane University Hospital and Clinic.....	C CP L T CP	Tulane University Hospital and Clinic.....	C CP L T CP

Continues on next page



Lakeview Regional Medical Center,
A Campus of Tulane C CP L T
Ochsner - LSU Health A C CP E
Shreveport Monroe Medical C CP L T
Rapides Regional Medical Center.... C L T
Baton Rouge General Medical Center.. C T
Glenwood Regional Medical Center T TV
Lake Charles Memorial Hospital..... E T
North Oaks Medical Center..... C CP
Our Lady of Lourdes Regional
Medical Center..... E T
Touro Infirmary Medical Center..... L T
University Medical Center New Orleans... E
Acadian Medical Center..... C
Beauregard Memorial Hospital..... IM
Children's Hospital of New Orleans..... E
Cypress Pointe Surgical Hospital..... CP
Lane Regional Medical Center..... E
Mercy Regional Medical Center G
Minden Medical Center..... C
Ochsner Baptist Medical Center C
Ochsner Medical Center - Baton Rouge... C
Ochsner Medical Center - Kenner C
Ochsner Medical Center - West Bank..... C
Slidell Memorial Hospital and
Medical Center..... C
St. Bernard Parish Hospital..... G
St. Charles Parish Hospital G
West Calcasieu Cameron Hospital..... E
West Jefferson Medical Center..... C
Willis Knighton Bossier C
Willis Knighton Pierremont..... G

MAINE

Maine Medical Center.... A C CP E IM L T ▲
Central Maine Medical Center..... C E T
Eastern Maine Medical Center..... C L T
York Hospital..... C

MARYLAND

Adventist Healthcare C CP E L T CP ▲
White Oak Medical Center.. C E IM L T
Johns Hopkins Hospital C CP E CP ▲
Luminis Health Anne Arundel
Medical Center..... C IM L T TV
UPMC Western Maryland..... C CP E L ▲
Adventist HealthCare Shady Grove
Medical Center..... C E CL CP
MedStar Union Memorial Hospital... G E L T
MedStar Southern Maryland
Hospital Center..... C CP E
Sinai Hospital of Baltimore..... C L T
Suburban Hospital..... C E T
TidalHealth Peninsula Regional, Inc..... C L T
University of Maryland Saint Joseph
Medical Center..... C L T
Frederick Health Hospital..... G E

Holy Cross Hospital of Silver Spring, Inc. ... C E
Howard County General Hospital C E
MedStar Franklin Square Medical Center.. C E
Carroll Hospital Center..... C
Holy Cross Germantown Hospital..... E
Johns Hopkins Bayview Medical Center..... C
Meritus Medical Center C
Saint Agnes Hospital C
UM Baltimore Washington Medical Center... C
UM Upper Chesapeake Medical Center, Inc... C
University of Maryland Capital Region
Medical Center C
University of Maryland Shore
Regional Health C
Walter Reed National Military
Medical Center..... C

MASSACHUSETTS

Lahey Hospital and
Medical Center..... A C E L T CL EP ▲
Lawrence General Hospital..... C E CL CP HF ▲
Baystate Medical Center A C E L T
Brigham & Women's Hospital..... C E L T
Cape Cod Hospital C E L T
Massachusetts General Hospital..... C IM L T
Mount Auburn Hospital C E L T
Saint Vincent Hospital C E L T
Tufts Medical Center C E L T
UMASS Memorial Medical Center..... C E L T
Beth Israel Deaconess Medical Center... C L T
Boston Medical Center..... C L T
Charlton Memorial Hospital C L T
Lowell General Hospital C E CL
Mercy Hospital..... A CP E
St. Elizabeth's Medical Center..... C L T
Anna Jaques Hospital C E
Berkshire Medical Center, Inc C E
Milford Regional Medical Center..... C E
Beth Israel Deaconess Hospital
Heart Plymouth, Inc..... C
Beverly Hospital C
Boston Children's Hospital IM
Caritas Holy Family Hospital..... C
Cooley Dickinson Hospital..... C
Good Samaritan Medical Center..... C
Melrose - Wakefield Hospital..... C
MetroWest Medical Center..... C
North Shore Medical Center- Salem Hospital.. C
Saint Anne's Hospital..... C
Signature Healthcare Brockton Hospital C
South Shore Health System..... C
UMass Memorial Medical Center TV

MICHIGAN

Spectrum Health A C CP IM L T ▲
UP Health System C CP E L T CL CP
Heart Marquette..... C CP E L T
Edward W. Sparrow
Hospital Assoc..... C CP L T ▲
Mercy Health A C E L T
MidMichigan Medical Center
Heart Midland..... C CP L T ▲
St. Joseph Mercy Oakland A C E L T
Trinity Health St. Joseph Mercy
Ann Arbor A C E L T
Ascension Genesys Hospital..... C E L T
Ascension Health C E L T
Ascension Providence Hospital
Southfield..... C E L T
Ascension St. John Hospital C E L T
Borgess Medical Center..... C E L T
Henry Ford Macomb Hospital..... A C L T
Lakeland HealthCare..... A C L T
McLaren Bay Region..... C E L T
McLaren Flint..... C E L T
McLaren Greater Lansing..... C E L T
McLaren Macomb C E L T
McLaren Northern Michigan C E L T
Michigan Medicine C IM L T
Spectrum Health CL EP TV ▲
Butterworth Hospital..... C L T
Beaumont Hospital, Dearborn C L T
Beaumont Hospital, Royal Oak..... C L T
Bronson Methodist Hospital..... C L T
Covenant Healthcare..... C L T
Harper University Hospital..... C L T
Henry Ford Health..... C L T
Henry Ford Jackson Hospital C L T
Holland Hospital..... C CP ▲
McLaren Port Huron Hospital..... C E T
Munson Medical Center C L T
Ascension Macomb - Oakland Hospital.... C E
Ascension Providence Hospital Novi..... G E
Ascension Providence Rochester Hospital... C E
Beaumont Hospital, Troy C T
Garden City Hospital..... C E
McLaren Oakland..... C E
Mercy Health Saint Mary's..... C E
Saint Mary Mercy Hospital C E
Beaumont Hospital, Farmington Hills..... C
Beaumont Hospital, Grosse Pointe C
Beaumont Hospital, Trenton C
Beaumont Hospital, Wayne C
DMC Sinai - Grace Hospital..... C
Henry Ford Health System West Bloomfield.. C
Henry Ford Wyandotte Hospital..... C
Hurley Medical Center C
Huron Valley Sinai Hospital C
Lake Huron Medical Center C
McLaren Central Michigan..... E

McLaren Thumb Region E
Monroe Regional Hospital G
Promedica Monroe Regional Hospital..... CL
University of Michigan Health - West C
UP Health System - Bell Hospital..... CP
UP Health System - Portage..... CP
Wayne State University
Heart Children's Hospital of MI IM

MINNESOTA

CentraCare Heart &
Vascular Center A C CP E L T ▲
Essentia Health - St. Mary's
Medical Center C CP L T CP ▲
University of Minnesota Health,
Heart Care - Minneapolis..... A C IM L T
Allina Health Minneapolis
Heart Institute - Minneapolis..... C E L T
Allina Health Minneapolis
Heart Institute - Saint Paul C E L T
Mayo Clinic Hospital
Saint Mary's Campus..... C IM L T
Mercy Hospital part of Allina Health.. C E L T
North Memorial Health..... C E L T
St. Joseph's Hospital A C L T
St. Luke's Hospital C E L T
University of Minnesota Health,
Heart Care - Edina..... A C L T
Park Nicollet Methodist Hospital..... C L T
Regions Hospital C L T
Sanford Bemidji Medical Center..... C CP ▲
Essentia Health - St. Joseph's Medical..... C CP
Hennepin County Medical Center C E
Children's Minnesota..... IM
Mayo Clinic Health System Mankato..... G
Ridgeview Medical Center..... C
St. John's Hospital C
University of Minnesota Health,
Heart Care - Burnsville..... C

MISSISSIPPI

Baptist Memorial Hospital
- Desoto A C CP E CL CP HF ▲
Mississippi Baptist
Medical Center..... A C CP E L T CP ▲
Baptist Memorial Hospital
- Golden Triangle..... C CP L T CL CP ▲
Merit Health Wesley
Medical Center..... C CP E L CP HF ▲
Forrest General Hospital..... C CP E L T ▲
Baptist Memorial Hospital
North Mississippi C CP E T ▲
North Mississippi Medical Center.. C CP L T ▲
Ocean Springs Hospital..... C CP L T ▲
St. Dominic - Jackson
Memorial Hospital..... A C CP L T
University of Mississippi
Medical Center..... CP L T TV ▲
Magnolia Regional Health Center C CP CP ▲
Southwest MS Regional
Medical Center C CP E ▲
Anderson Regional Medical Center..... C CP ▲
Memorial Health System..... C CP L
Merit Health River Region C CP CP
Methodist Healthcare
- Olive Branch Hospital C CP CP
Pascagoula Hospital..... C CP ▲
Baptist Memorial Hospital
- North Mississippi CL CP

Delta Regional Medical Center..... C CP
Merit Health System C CP
River Oaks Hospital..... C CP
Rush Foundation Hospital..... C CP
Singing River Gulfport C CP
Bolivar Medical Center CP
Merit Health - Biloxi C
Merit Health Natchez..... CP

MISSOURI

Barnes Jewish Hospital/
Washington University..... A C CP E L T ▲
Heartland Regional
Medical Center..... C CP E L T CP ▲
Research Medical Center... A C CP E L T
North Kansas City Hospital..... C CP E L T
Saint Francis Medical Center... C CP L T CP ▲
Centerpoint Medical Center..... C CP E L
Freeman Health System..... C CP L T
Liberty Hospital..... C CP E CP ▲
Mercy Hospital Joplin C CP L T ▲
Mercy Hospital Springfield C CP L T ▲
Mercy Hospital St. Louis C CP L T ▲
Poplar Bluff Regional
Medical Center C CP CL CP ▲
Saint Luke's Hospital
of Kansas City..... A C E L T
Southeast Missouri Hospital C CP E T ▲
University of Missouri
Hospital and Clinics..... A C E L T
Boone Hospital Center C L T TV
Christian Hospital BJC Healthcare... C CP T ▲
Cox Medical Center Branson..... C CP E ▲
Cox Medical Center South..... C CP L T
Mercy Hospital South..... C CP L T
SSM Health Saint Louis
University Hospital..... C CP L T
St. Luke's Hospital..... C E L T

Carondelet Heart Institute
at St. Joseph Medical Center..... CP CP ▲
Hannibal Regional Hospital C CP E
Lee's Summit Medical Center..... C CP E
Missouri Baptist Medical Center..... C L T
SSM Health DePaul Hospital - St. Louis... C CP L
St. Mary's Medical Center CP CP ▲
Truman Medical Centers..... C CP E
Capital Region Medical Center..... C CP
Children's Mercy Kansas City E IM
Citizens Memorial Hospital..... CP ▲
Mercy Hospital Jefferson..... C CP
Mercy Hospital Washington
East Community..... C CP
Northeast Regional Medical Center C CP
Saint Luke's East Hospital C E
Saint Luke's Northland Hospital..... C E
SSM Health - St Marys Hospital
Jefferson City..... C CP
SSM Health St. Clare Hospital - Fenton C CP
SSM Health St. Mary's Hospital - St. Louis.. C CP
SSM St. Joseph Hospital - St. Charles..... C CP
SSM St. Joseph Hospital West..... C CP
St. Luke's Des Peres Hospital..... C E
Barnes Jewish St. Peters Hospital..... C
Belton Regional Medical Center CP
Bothwell Regional Health Center E
Heart Care Center, LLC..... E
Lake Regional Health System C

Moberly Regional Medical Center C
Ozarks Healthcare..... C
Phelps County Regional Medical Center..... C
Progress West Healthcare..... C
SSM Cardinal Glennon Children's Medical.... IM
St. Louis Children's Hospital IM

MONTANA

Billings Clinic..... C CP L T CP TV ▲
St. Vincent Healthcare..... A C CP L T CP ▲
Logan Health..... C CP L T
Community Medical Center C CP E CP
Providence St. Patrick Hospital..... A C L T
Bozeman Health C CP ▲
St. James Health Care C CP ▲
Benefis Hospitals..... C T

NEBRASKA

Bryan Medical Center C E L T CL EP ▲
Nebraska Medicine..... C CP L T CP ▲
CHI Health CUMC - Bergan Mercy ... A C L T
CHI Health Nebraska Heart..... A C L T
Faith Regional Health Services..... C CP CP ▲
Kearney Regional Medical Center..... A C T
Nebraska Methodist Hospital..... C L T
Bellevue Medical Center C CP
Great Plains Health C E
Mary Lanning Healthcare C CP
CHI Health Good Samaritan C
CHI Health Immanuel C
CHI Health Lakeside C
CHI Health St. Francis..... C
Children's Hospital and Medical Center IM

NEVADA

Saint Mary's Regional
Medical Center..... C CP E L T CL CP TV ▲
Renown Regional
Medical Center..... C CP L T HF ▲
University Medical Center
of Southern Nevada..... C CP T CP ▲
Dignity Health St. Rose
Dominican Siena C CP T CP
MountainView Hospital..... C CP L T
Dignity Health St. Rose Dominican
San Martin..... C CP CP
North Vista Hospital C CP CP
Northeastern Nevada
Regional Hospital..... C CP CP
Sunrise Hospital and Medical Center... C L T
Desert Springs Hospital..... E L
Northern Nevada Medical Center..... C CP
Spring Valley Hospital E T
Carson Tahoe Regional Medical Center CP
Centennial Hills Hospital Medical Center..... E
Henderson Hospital E
Renown South Meadows Medical Center..... CP
Southern Hills Hospital C
Summerlin Hospital Medical Center..... E
Valley Hospital Medical Center..... E

NEW HAMPSHIRE

Catholic Medical Center..... C E L T
Portsmouth Regional Hospital..... A C T CP
Concord Hospital..... C L T
Dartmouth Hitchcock Medical Center .. C L T

REGISTRIES

A AFib Ablation Registry™
C CathPCI Registry
CP Chest Pain - MI Registry™
E EP Device Implant Registry™
IM IMPACT Registry®
L LAAO Registry™
T STS/ACC TVT Registry™

ACCREDITATIONS

AF Atrial Fibrillation
CL Cardiac Cath Lab
CP Chest Pain Center
EP Electrophysiology
HF Heart Failure
TV Transcatheter Valve

AWARDS

▲ Chest Pain - MI Registry™ Award Platinum
▲ Chest Pain - MI Registry™ Award Gold
▲ Chest Pain - MI Registry™ Award Silver
◆ HeartCARE Center

Contract status current as of June 1, 2022. Visit [CardioSmart.org/FindYourHeartHome](https://www.cardiosmart.org/FindYourHeartHome) for the most current information.

Continues on next page



Exeter Hospital.....	C CL
Parkland Medical Center.....	C CP
Southern New Hampshire Medical Center.....	C E
St. Joseph Hospital.....	C E
Elliot Hospital.....	C
Wentworth - Douglass Hospital.....	C

NEW JERSEY

Jersey Shore University Medical Center.....	C CP E L T CP HF
JFK Medical Center.....	C CP CL CP HF
Englewood Health.....	C CP L T TV
Hackensack Meridian Health Network.....	C CP L T CP
Ocean Medical Center.....	C CP CP HF
Riverview Medical Center.....	C CP CP HF

Cooper University Health System.....	C E L T TV
Deborah Heart & Lung Center.....	A C E L T
Morristown Medical Center.....	C E L T TV
Newark Beth Israel Medical Center.....	C E IM L T
St. Francis Medical Center.....	A C E L T
The Valley Hospital.....	C CP E L T
AtlantiCare Regional Medical Center.....	C E L T
Bayshore Community Hospital.....	C CP CP
Cooperman Barnabas Medical Center, Inc.....	C E L T
Robert Wood Johnson University Hospital.....	C E L T
Southern Ocean Medical Center.....	C CP CP HF
Virtua Our Lady of Lourdes.....	C E L T

Capital Health Medical Center - Hopewell.....	C CP CP
St. Joseph's Health.....	C L T
University Hospital.....	E L T
Clara Maass Medical Center.....	C CP
Inspira Medical Center - Mullica Hill.....	C CP
Inspira Medical Center Vineland.....	CP CP
Jersey City Medical Center.....	C T
Raritan Bay Medical Center.....	CP CP
St. Michael's Medical Center.....	E T
Bayonne Medical Center.....	C
Centrastate Medical Center.....	C
CentraState Medical Center.....	CP
Chilton Medical Center.....	C
Christ Hospital.....	C
Community Medical Center.....	C
Hackettstown Medical Center.....	CP
Holy Name Medical Center.....	C
Hunterdon Healthcare System.....	C
Jefferson Washington Township Hospital.....	C
Monmouth Medical Center.....	C
Mountainside Medical Center.....	C
Newton Medical Center.....	C
Overlook Medical Center.....	C
Princeton Medical Center.....	C

Robert Wood Johnson University Hospital - Hamilton.....	C
Robert Wood Johnson University Hospital - Rahway.....	C
Robert Wood Johnson University Hospital - Somerset.....	C
Saint Clare's Hospital.....	C
Saint Peter's University Hospital.....	C
Shore Medical Center.....	C
St. Luke's Warren Campus.....	C
St. Mary's General Hospital.....	L
Trinitas Regional Medical Center.....	C
Virtua Health Inc.....	C
Virtua Memorial Hospital.....	C
Virtua Our Lady of Lourdes Hospital.....	EP

NEW MEXICO

Presbyterian Healthcare Services.....	C CP L T
San Juan Regional Medical Center.....	C CP E
Lovelace Medical Center.....	C L T
Memorial Medical Center.....	C E CP
Mountain View Regional Medical Center.....	C CP CP
University of New Mexico Hospital.....	C L T
Carlsbad Medical Center.....	C CP
Eastern New Mexico Medical Center.....	C CP
Gerald Champion Regional Medical.....	CP E
Christus St. Vincent Regional Medical Center.....	C
Los Alamos Medical Center.....	CP

NEW YORK

UR Medicine Strong Memorial Hospital.....	A C CP E IM L T TV
St. Elizabeth Medical Center.....	C CP E L T CL EP
The Mount Sinai Medical Center.....	C CP E IM L T TV
Bellevue Hospital Center.....	A C CP E L CL EP
Mount Sinai St. Luke's.....	C CP E L T
New York Presbyterian - Queens.....	C CP E L T
St. Joseph's Hospital.....	A C E L T HF
Stony Brook University Hospital.....	A C CP L T CP
Westchester County Health Care Corp.....	C E IM L T TV
New York Presbyterian - Weill Cornell Medical Center.....	C CP IM L T
St. Peter's Hospital.....	A C E L T
Vassar Brothers Medical Center.....	C E L T TV
Albany Medical Center Hospital.....	C E L T
Bassett Medical Center.....	C E L T
Good Samaritan Hospital.....	C E L T
Good Samaritan Hospital Medical Center.....	C E L T
Jamaica Hospital Medical Center.....	C CP E
Mercy Hospital of Buffalo.....	C E L T
Montefiore Medical Center.....	C IM L T

New York Presbyterian - Brooklyn Methodist Hospital.....	C CP L T
New York Presbyterian - Columbia University Irving.....	C CP L T
NYU Langone Health - Tisch Hospital.....	C IM L T
St. Francis Hospital and Heart Center.....	C L T TV
Upstate Medical University.....	C E L T
Arnot Ogden Medical Center.....	C CP E
Bronx Care Health System.....	CP E
Cayuga Medical Center at Ithaca.....	C CP CP
Ellis Hospital.....	C L T
Gates Vascular Institute.....	C L T
Maimonides Medical Center Division of Cardiology.....	C L T

New York Presbyterian - Lawrence Hospital.....	C CP CP
Northwell Health Lenox Hill Hospital.....	C L T
Northwell Health North Shore University Hospital.....	C L T
Northwell Health Southside Hospital.....	C L T
Northwell Health Staten Island Hospital.....	C L T
NYU Langone Hospital - Long Island.....	C CP
Richmond University Medical Center.....	C L T
Rochester Regional Health System.....	C CP E
UPMC Chautauqua.....	C CP E
Wyckoff Heights Medical Center.....	C CP E
Cohen Children's Medical Center.....	E IM
Garnet Health.....	C E
Glens Falls Hospital.....	C E
Montefiore St Lukes's Cornwall.....	C E
Mount Sinai Beth Israel.....	C E
Mount Sinai South Nassau Hospital.....	C E
New York Presbyterian - Hudson Valley Hospital.....	C CP
Northwell Health Long Island Jewish Hospital.....	C L
Olean General Hospital.....	C E
Stony Brook Southampton Hospital.....	C E
The Brooklyn Hospital Center.....	C CP
United Health Services Hospitals/ Wilson Regional.....	L T
Brookdale Hospital & Medical Center.....	E
Crouse Hospital.....	L
HealthAlliance Hospital - Broadway Campus.....	C
Jacobi Medical Center.....	E
John T. Mather Hospital.....	C
Long Island Community Hospital.....	C
Montefiore Nyack Hospital.....	C
New York Presbyterian - Morgan Stanley Children's.....	IM
Niagara Falls Memorial Medical Center.....	C
Northern Westchester Hospital.....	C
Northwell Health Huntington Hospital.....	C
NYU Langone Hospital - Brooklyn.....	C
Peconic Bay Medical Center.....	C

Rochester Regional Health.....	C
Samaritan Hospital.....	C
Saratoga Hospital.....	C
SBH Health System.....	C
St. Catherine of Siena.....	C
UVM Health Network CVPH.....	C
White Plains Hospital.....	C

NORTH CAROLINA

CarolinaEast Medical Center.....	C CP E L T CL CP HF
New Hanover Regional Medical Center.....	A C CP E L T CP HF
UNC Medical Center.....	A C CP IM L T CP TV
Frye Regional Medical Center.....	C CP E L CL CP
Duke University Hospital.....	C CP E IM L T
Atrium Health's Carolinas Medical Center.....	C CP IM L T
Cape Fear Valley Health System.....	C CP E T CP
Moses H. Cone Memorial Hospital.....	C CP E L T
Novant Health Forsyth Medical Center.....	A C CP L T
Novant Health Presbyterian Medical Center.....	A C CP L T
Rex Hospital.....	C CP L T CP
Wake Forest Baptist Health.....	C CP IM L T
WakeMed Raleigh Campus.....	C CP L T CP
Atrium Health Cabarrus.....	C CP L T
CaroMont Regional Medical Center.....	C CP E L T
UNC Health Southeastern.....	A C CP E
Vidant Medical Center.....	C E IM L T
Alamance Regional Medical Center.....	C CP E
Atrium Health Wake Forest Baptist High Point.....	C CP CP
Duke Raleigh Hospital.....	C CP E

Duke Regional Hospital.....	C CP E
Haywood Regional Medical Center.....	C E CL CP
Nash UNC Healthcare.....	C CP CP
Sentara Albemarle Medical Center.....	C CP E
WakeMed Cary Hospital.....	C CP CP
Atrium Health Pineville.....	C CP
Catawba Valley Medical Center.....	C CP CP
Central Carolina LifePoint Health.....	C CP HF
FirstHealth Moore Regional Hospital.....	C L T
Johnston UNC Health Care.....	C CP CP
Mission Hospital, Inc.....	C L T
Novant Health Huntersville Medical Center.....	C CP
Novant Health Matthews Medical Center.....	C CP
Pardee Hospital.....	C CP CP
Watauga Medical Center.....	C CP E
Wayne UNC Healthcare.....	C CP
Wilson Medical Center.....	C E CP
Davis Regional Medical Center.....	C CP
Harris Regional Hospital.....	C CP
Iredell Memorial Hospital.....	C CP
Lake Norman Regional Medical Center.....	C CP
Margaret R. Pardee Memorial Hospital.....	CP
Maria Parham Health.....	C CP
Novant Health Rowan Medical Center.....	C
Atrium Health Union.....	C
Betsy Johnson Hospital.....	CP
Caldwell Memorial Hospital.....	C
Carteret Health Care.....	C
Central Harnett Hospital.....	CP
DLP Cardiac Partners LLC/BRC.....	C
Halifax Regional Medical Center.....	C
Johnston Health Clayton.....	CP
Person Memorial Hospital.....	CP
Rutherford Regional Health System.....	CP
Scotland Healthcare System.....	C

Swain County Hospital.....	CP
Wayne UNC Healthcare.....	CP

NORTH DAKOTA

Sanford Medical Center Bismarck.....	C CP L T CP
Sanford Medical Center Fargo.....	C CP L T CP
Altru Health System.....	C CP L T
Essentia Health - Fargo.....	C CP L T
Trinity Hospitals.....	C CP E
CHI St. Alexius Health.....	A C

OHIO

Summa Health System - Akron Campus.....	C CP L T CP HF TV
Hillcrest Hospital.....	C CP E L T
ProMedica Toledo Hospital.....	C CP E L T CL
Southwest General Health Center.....	A C CP E L T
Aultman Hospital.....	C CP L T CP
Fairview Hospital.....	C CP E T CP
University Hospitals Cleveland Medical Center.....	C CP L T CP
Adena Regional Medical Center.....	C CP L T
Bethesda Hospital.....	A C E L T
Cleveland Clinic.....	C E IM L T
Cleveland Clinic Mercy Hospital.....	C E T CL HF
Firelands Regional Medical Center.....	C CP CP HF
Kettering Health Hamilton.....	C CP E CP
Kettering Health Main Campus.....	A C E L T
The MetroHealth System.....	C CP L T
The University of Toledo Medical Center.....	C CP L T
Trinity Medical Center West.....	A C E L T
Atrium Medical Center.....	C E L CP
Cleveland Clinic Akron General.....	C E L T

Continues on next page

YOU TAKE CARE OF PATIENTS. WE TAKE CARE OF YOU.

While the wellness of all health care providers has always been a primary focus of the American College of Cardiology (ACC), the unprecedented challenges over the last several years have underscored the importance of the well-being of all clinicians.

Find resources and tools to incorporate wellness into your professional and personal lives on ACC's Clinician Well-Being Portal.

Visit [ACC.org/ClinicianWellbeing](https://www.acc.org/ClinicianWellbeing) to learn more.

REGISTRIES

A AFib Ablation Registry™	IM IMPACT Registry®
C CathPCI Registry	L LAAO Registry™
CP Chest Pain - MI Registry™	T STS/ACC TVT Registry™
E EP Device Implant Registry™	

ACCREDITATIONS

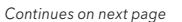
AF Atrial Fibrillation	HF Heart Failure
CL Cardiac Cath Lab	TV Transcatheter Valve
CP Chest Pain Center	
EP Electrophysiology	





AWARDS

▲ Chest Pain - MI Registry™ Award Platinum
▲ Chest Pain - MI Registry™ Award Gold
▲ Chest Pain - MI Registry™ Award Silver
◆ HeartCARE Center



Participants in ACC's NCDR Registries, Accreditation Services and Awardees



REGISTRIES		ACCREDITATIONS		AWARDS
A AFib Ablation Registry™	IM IMPACT Registry®	AF Atrial Fibrillation	HF Heart Failure	 Chest Pain - MI Registry™ Award Platinum
C CathPCI Registry™	L LAAO Registry™	CL Cardiac Cath Lab	TV Transcatheter Valve	 Chest Pain - MI Registry™ Award Gold
CP Chest Pain - MI Registry™	T STS/ACC TVT Registry™	CP Chest Pain Center		 Chest Pain - MI Registry™ Award Silver
E EP Device Implant Registry™		EP Electrophysiology		 HeartCARE Center

Contract status current as of June 1, 2022. Visit [CardioSmart.org/FindYourHeartAtHome](https://www.CardioSmart.org/FindYourHeartAtHome) for the most current information.

Echla Health		C E	UPMC McKeesport		C E	Conway Medical Center		C CP E CP
Westmoreland Hospital	A C E L T		Chambersburg Hospital		C	Medical University of South Carolina		C IM L T
Penn State Health St. Joseph	C CP L T ▲		Chan Soon - Shiong Medical Center at Windber		C	Prisma Health		C L T CP
Penn State Hershey Medical Center	C E IM L T		Conemaugh Meyersdale Medical Center		CP	Trident Medical Center		A C L T
Pennsylvania Hospital	C CP E L ▲		Conemaugh Miners Medical Center		CP	Beaufort Memorial Hospital		C CP ▲
Reading Hospital	A C E L T		Ephrata Community Hospital		C	Grand Strand Health		C L T
St. Luke's University Health Network - Bethlehem	C E L T CP		Evangelical Community Hospital		C	Hilton Head Hospital		C CP L
Temple University Hospital	C CP E L T		Grand View Hospital		C	Roper Hospital		C L T
The Guthrie Clinic	A C E L T		GSL Hospital		CP	Aiken Regional Medical Center		C L
UPMC Hamot	C CP E L T		Heritage Valley Beaver		T	Tidelands Georgetown Memorial Hospital		C CP
UPMC Passavant Hospital	C CP E L T		Jefferson Bucks		C	Carolina Pines Regional Medical Center		CP
UPMC Shadyside	C CP E L T		Lehigh Valley Hospital - Hazleton		CP	Cherokee Medical Center		CP
Allegheny General Hospital	C E L T		Lehigh Valley Hospital - Schuylkill East Norwegian Street		CP	East Cooper Medical Center		C
Crozer Chester Medical Center	C CP L T		Lower Bucks Hospital		C	Kershaw Medical Center		CP
Einstein Medical Center Montgomery	C E T CP		Monongahela Valley Hospital		C	MUSC Health Columbia Medical Center Northeast		CP
Forbes Hospital	C CP E T		Paoli Hospital		C	MUSC Health Florence Medical Center		C
Geisinger Medical Center	C IM L T		Prime Healthcare - Roxborough Memorial Hospital		C	Piedmont Medical Center		C
Lehigh Valley Health Network	C E L T		Riddle Hospital		C			
Penn Medicine/Lancaster General Health	C E L T		St. Christopher's Hospital For Children		IM			
Saint Vincent Hospital	C E L T		St. Luke's Carbon Campus		CP	SOUTH DAKOTA		
St. Clair Hospital	C E L T		St. Luke's Hospital - Miners Campus		CP	Avera Heart Hospital of South Dakota		C CP L T CP ▲
Temple University Hospital - Jeanes Campus	C CP E ▲		St. Luke's Hospital - Monroe Campus		CP	Monument Health		C CP E L T ▲
UPMC Hanover	C CP E ▲		St. Luke's University Health Network - Anderson		C	Sanford USD Medical Center		C CP L T CP
UPMC Memorial	C CP E ▲		St. Luke's University Health Network - Monroe		C	Avera St. Luke's		C CP
UPMC Presbyterian Hospital	C CP E L		The Good Samaritan Hospital		C	Prairie Lakes Healthcare		C CP ▲
UPMC Susquehanna	C CP E		UPMC Children's Hospital of Pittsburgh		IM	Avera Sacred Heart Hospital		E
UPMC West Shore	C CP E ▲		UPMC Jameson		C	Sanford Aberdeen Medical Center		CP
Wellspring York Hospital	C L T CP		Wayne Memorial Hospital		C			
Abington Memorial Hospital	C L T		Wellspan Gettysburg Hospital		C	TENNESSEE		
Geisinger Wyoming Valley Medical Center	C L T		Wexford Hospital		C	Baptist Memorial Hospital Memphis		A C CP E L T CL CP ▲
Jefferson Hospital	C E T					Jackson Madison County General Hospital		C CP E T CP TV ▲ ◆
Jefferson Torresdale	C L T		PUERTO RICO			CHI Memorial		A C CP L T CP ▲
Lankenau Medical Center	C L T		Cardiovascular Center of Puerto Rico		E L T CP	Methodist Hospital Germantown		A C E L T CP EP
Lehigh Valley Health Network Muhlenberg	C E L		Hospital Pavia Santurce		E L T	Methodist Hospital University		A C CP E CP EP ▲
Meadville Medical Center	C CP ▲		Hospital Auxilio Mutuo		CP L T	Tenna - Turkey Creek Medical Center		A C CP L T CP ▲
Nason Medical Center, LLC	C E CP		Hospital Damas		L T	University of Tennessee Medical Center		C CP E L T CP ▲
Nazareth Hospital	C CP E		Hospital Menonita Cayey		L T	Chattanooga - Hamilton County Hospital Authority		C CP E L T
Penn State Health Holy Spirit Medical Center	C L T		Saint Luke's Memorial Hospital		E T	Holston Valley Medical Center		C CP L T ▲
Somerset Hospital	C CP ▲		Bayamon Medical Center		T	Maurry Regional Medical Center		C CP E CP ▲
Thomas Jefferson University Hospital	C L T		Doctors' Center Hospital		CP	Parkridge Medical Center		A C L T CP
UPMC East	C CP E		Mayaguez Medical Center		T	Vanderbilt University Medical Center		C CP L T CP
UPMC Mercy	C CP E					Ascension Saint Thomas Hospital West		C E L T
West Penn Hospital	C CP ▲		RHODE ISLAND			Cookeville Regional Medical Center		C L T CP
ACMH Hospital	C CP		Rhode Island Hospital		C L T	Saint Francis Hospital		C CP T CP
Bryn Mawr Hospital	C L		Kent Hospital		C E	TriStar Centennial Medical Center		A C L T
Children's Hospital of Philadelphia	E IM		Landmark Medical Center		C	Ascension Saint Thomas Hospital Midtown		C E L
Geisinger Community Medical Center	C T		Miriam Hospital		C	Blount Memorial Hospital		CP CP ▲
Holy Redeemer Hospital	C E					Bristol Regional Medical Center		C CP
Indiana Regional Medical Center Cardiology Department	C E		SOUTH CAROLINA			Johnson City Medical Center		C L T
J.C. Blair Memorial Hospital	C E		Lexington Medical Center		C CP E L T CL CP TV ▲ ◆	Methodist Hospital North		C E CP
Lehigh Valley Hospital - Pocono	C E		Spartanburg Regional Healthcare System		A C CP E L T CP HF ▲ ◆	Southern Tennessee Medical Center		C E CP
Mount Nittany Medical Center	C E		AnMed Health		A C CP L T CP ▲	St. Francis Bartlett		C CP CP
Penn Highlands Dubois	C T		McLeod Regional Medical Center		C CP E L T CP ▲	Sumner Regional Medical Center		C E CP
Phoenixville Hospital	C L		Prisma Health Richland		C CP L T CP ▲			
St. Lukes University Health Network - Allentown	C CP		Self Regional Healthcare		C CP L T CP ▲			
The Uniontown Hospital	C E		Bon Secours St. Francis Health System		C CP L T ▲			
UPMC Lititz	C E		MUSC Health Columbia Downtown		C CP L T CP			



Tennova - North Knoxville Medical Center.....	C CP CP	Houston Methodist Willowbrook Hospital.....	C CP E L CL CP ▲	Texas Health Harris Methodist Fort Worth	C CP L T ▲
Vanderbilt Tullahoma - Harton Hospital.....	C CP CP	University Health	C CP L T CL CP ▲	Texas Health Heart and Vascular Hospital.....	C CP L T ▲
Ascension Saint Thomas Rutherford.....	C E	UT Health Tyler.....	C CP E L T CP ▲	Texoma Medical Center.....	C L T CL CP
Memphis Hospital - South Campus.....	C CP	Ascension Seton Medical Center Austin	C CP E L T ▲	University Medical Center of El Paso.....	C CP E L CP
NorthCrest Medical Center	C CP	Harris Health System	C CP E T CP ▲	Valley Regional Medical Center	C CP L CL CP
Parkwest Medical Center	L T	HCA Houston Healthcare Conroe	C CP L T CP ▲	Woodland Heights Medical Center.....	C E L CL EP
Tennova Healthcare - Clarksville.....	C CP	Houston Healthcare Kingwood	C CP L T AF CP	AdventHealth Central Texas	C CP E
Tennova Healthcare - Cleveland.....	C CP	Houston Methodist Hospital	C CP E L T ▲	Ascension Seton Medical Center Hays	C CP E ▲
Tristar Hendersonville Medical Center.....	C CP	West Hospital.....	C CP E L T CP	Ascension Seton Medical Center Williamson.....	C CP E ▲
Tristar Horizon Medical Center	C CP	Medical Center Hospital.....	C CP E L T CP	Baylor Scott & White Medical Center - College Station	C CP T ▲
TriStar Summit Medical Center	C CP	Metropolitan Methodist Hospital	A C CP L CL ▲	BSA Hospital LLC.....	C E L T
Baptist Memorial Hospital - Tipton	CP	Northeast Baptist Hospital.....	C CP E L CP ▲	CHI/St. Luke's The Vintage Hospital..	C CP E CL
Baptist Memorial Hospital - Union City	CP	United Regional Healthcare System	CP E T CP HF ▲	CHI/St. Luke's the Woodlands Hospital.....	C CP E T
Baptist Memorial Hospital Carroll County.....	CP	University of Texas Southwestern Medical Center...	C CP E L T ▲	CHRISTUS Santa Rosa Hospital - New Braunfels.....	A C CP L
CHI Memorial Hospital Hixson.....	CP	Texas Health Presbyterian Hospital of Dallas	C CP L T ▲	CHRISTUS Santa Rosa Hospital - Westover Hills.....	C CP L T
Erlanger - Chattanooga Hamilton County Hospital - East Campus	C	Baptist Medical Center	C CP E T CP	Dallas Regional Medical Center.....	CP E CP ▲
Erlanger Medical Center	CP	Baylor Scott & White Health.....	C CP L T ▲	Dell Seton Medical Center at The University of Texas	C CP E ▲
Hardin Medical Center.....	CP	Baylor Scott & White Heart and Vascular - Dallas.....	C CP L T ▲	HCA Healthcare North Cypress	C CP L CP
Le Bonheur Children's Hospital	IM	Baylor Scott & White Medical Center - Round Rock.....	C CP L T ▲	HCA Houston Healthcare Tomball....	C CP CP ▲
Livingston Regional Hospital.....	CP	CHRISTUS Good Shepherd Medical Center	C CP L T ▲	Heart Hospital of Austin.....	A C L T
Riverview Regional Medical Center	CP	CHRISTUS Spohn Hospital Corpus Christi - Shoreline	C CP L T CP	Hendrick Medical Center North	A C L T
Southern Tennessee - Sewanee.....	CP	Corpus Christi Medical Center	C CP L T CP	Houston Healthcare Pearland	C CP CP ▲
Southern Tennessee Regional Health System - Lawrenceburg	CP	Covenant Health.....	A C E L T	Houston Healthcare West	C CP L CP
Southern Tennessee Regional Health System - Pulaski	CP	DeTar Healthcare System	C CP L CP ▲	Houston Methodist Sugar Land Hospital	C CP L T
Starr Regional Medical Center.....	CP	Doctors Hospital at Renaissance..	CP E T CP HF	Las Palmas Medical Center.....	A C CP L
Tennova Jefferson Memorial Hospital.....	CP	HCA Houston Healthcare Medical Center	C CP L T CP	McAllen Heart Hospital.....	CP E T CP
TriStar Skyline Medical Center	C	Houston Healthcare Clear Lake ...	C CP L T CP	Memorial Hermann Southwest Hospital.....	C CP L T
TriStar Southern Hills Medical Center.....	C	Houston Healthcare Southeast.....	C CP L CP ▲	Methodist Dallas Medical Center	C CP L T
TriStar Stone Crest Medical Center.....	C	Houston Methodist The Woodlands Hospital	C CP L T ▲	Methodist Richardson Medical Center	C CP L T
Trousdale Medical Center.....	CP	Medical City Heart & Spine	A C L T CP	Mission Trail Baptist Hospital.....	C CP E CP
Vanderbilt Wilson County Hospital.....	CP	Memorial Hermann Hospital TMC	C CP IM L T	North Central Baptist Hospital.....	C CP E ▲
West Tennessee Healthcare Bolivar General Hospital	CP	Memorial Hermann Medical City Hospital	C CP L T ▲	Seton Medical Center Harker Heights.....	C CP E ▲
West Tennessee Healthcare Camden General Hospital	CP	Memorial Hermann Southeast Hospital.....	C CP L T ▲	Shannon Medical Center.....	C CP T ▲
West Tennessee Healthcare Dyersburg Hospital	CP	Memorial Hermann The Woodlands Medical Center..	C CP L T ▲	St. David's Medical Center	A C E L
West Tennessee Healthcare Volunteer Hospital	CP	Methodist Stone Oak Hospital.....	C CP E CP ▲	Tarrant County Hospital District	C CP E ▲
TEXAS				University Medical Center.....	C E L T
CHI/Baylor St. Luke's Medical Center...	A C CP E L T CL EP TV ▲ ◆	Northeast Methodist Hospital.....	A C CP L CP	University of Texas Medical Branchat Galveston	C E L T
CHRISTUS Mother Frances Hospital	C CP E L T CL CP HF TV ▲ ◆	Resolute Health Hospital.....	C CP E CP ▲	Wadley Regional Medical Center	C CP CP ▲
St. Luke's Health - Memorial - Lufkin	C CP E L CL CP EP HF ◆	Rio Grande Regional Hospital.....	C CP L CP ▲	Baylor Scott & White - Grapevine	C CP ▲
The Hospitals of Providence Sierra Campus	C CP L T CL CP HF ▲ ◆	St. David's South Austin Medical Center	A C E L T	Baylor Scott & White All Saints Medical Center	CP T ▲
Methodist Hospital/Methodist Children's Hospital.....	A C CP IM L T CP ▲	St. Luke's Baptist Hospital	C CP E CP ▲	Baylor Scott & White Medical Center - Irving	C CP ▲
Methodist Texsan Hospital	C CP E L CL EP ▲ ◆				
Ascension Providence.....	C CP E L T TV ▲				

REGISTRIES		ACCREDITATIONS		AWARDS	
A AFib Ablation Registry™	IM IMPACT Registry®	AF Atrial Fibrillation	HF Heart Failure	▲ Chest Pain - MI Registry™ Award Platinum	
C CathPCI Registry	L LAAO Registry™	CL Cardiac Cath Lab	TV Transcatheter Valve	▲ Chest Pain - MI Registry™ Award Gold	
CP Chest Pain - MI Registry™	T STS/ACC TVT Registry™	CP Chest Pain Center		▲ Chest Pain - MI Registry™ Award Silver	
E EP Device Implant Registry™		EP Electrophysiology		◆ HeartCARE Center	

Contract status current as of June 1, 2022. Visit [CardioSmart.org/FindYourHeartHome](https://www.cardiosmart.org/FindYourHeartHome) for the most current information.

CHI St. Joseph Health Regional Hospital.....	A C L	Memorial Hermann Katy Hospital	CP ▲	UTAH	
CHI/St. Luke's Patients Medical Center.....	C CP E	Memorial Hermann Northeast	CP ▲	Ogden Regional Medical Center..	
CHI/St. Luke's Sugar Land Hospital.....	C CP E	Memorial Hermann Pearland	CP ▲	St. Mark's Hospital/ Northern Utah Healthcare Corp. ...	
CHRISTUS St. Michael Health System.....	CP CP ▲	Methodist Mansfield Medical Center.....	C CP	University of Utah Health.....	
Citizens Medical Center.....	CP CP ▲	Midland Memorial Hospital	E T	Timpanogos Regional Hospital.....	
City Hospital at White Rock.....	C CP E	Navarro Regional Hospital	C CP	Intermountain McKay - Dee Hospital	
Del Sol Medical Center.....	A C CP	Odessa Regional Hospital.....	C CP	Intermountain Medical Center.....	
HCA Houston Healthcare Northwest.....	C CP CP	St. Joseph Medical Center	C CP	Intermountain St. George Regional Hospital.....	
Hillcrest Baptist Medical Center	C CP L	Texas Health Hospital Frisco.....	C CP	Intermountain Utah Valley Hospital	
Hospitals of Providence - Memorial Campus	C CP ▲	Texas Regional Medical Center at Sunnyvale	C CP	Mountain View Hospital.....	
Houston Healthcare Mainland	C CP CP	The Heart Hospital of Northwest Texas.....	C L	Davis Hospital Medical Center.....	
Houston Methodist Clear Lake Hospital.....	C CP E	The Medical Center Of Southeast Texas.....	C CP	Lakeview Hospital	
Laredo Medical Center.....	C CP CP	Valley Baptist Medical Center - Brownsville	C CP	Salt Lake Regional Medical Center.....	
Longview Regional Medical Center.....	C L T	Wise Health Surgical Hospital at Parkway ..	E EP	Ashley Regional Medical Center	
Lubbock Heart Hospital.....	C E T	Wise Health System	C CP	Castleview Hospital	
Medical City Arlington.....	C CP CP	Baylor Scott & White Health - Marble Falls.....	C	Intermountain Primary Children's Hospital	
Medical City Denton	C CP CP	Baylor Scott & White Medical Center - Centennial	C	Jordan Valley Medical Center	
Medical City Fort Worth	C L T	Baylor Scott & White Medical Center - Waxahachie	CP	Jordan Valley Medical Center - West Valley Campus.....	
Methodist Charlton Medical Center.....	C CP	CHI - St. Joseph Health College Station Hospital.....	C	Mountain Point Medical Center	
Palestine Regional Medical Center	C E CP	Children's Hospital of San Antonio.....	IM	Mountain West Medical Center	
Paris Regional Medical Center	C E CP	Children's Medical Center of Dallas.....	IM		
Parkland Health & Hospital System.....	C E L	CHRISTUS Santa Rosa San Marcos	CP		
Round Rock Medical Center.....	A C L	CHRISTUS Spohn Hospital Alice.....	C		
Texas Health Harris Methodist HEB.....	C CP ▲	CHRISTUS St. Michael Hospital - Atlanta.....	CP		
Texas Health Harris Methodist Hospital Alliance	C CP	Cigarroa Interventional Institute.....	E		
Texas Health Huguley Hospital	C CP E	Cook Children's Medical Center	IM		
Texas Health Presbyterian Denton.....	C CP ▲	Dell Children's Medical Center of Central Texas	IM		
Texas Health Presbyterian Hospital Plano.....	C CP ▲	Ennis Regional Medical Center	CP		
Texas Vista Medical Center.....	C CP CP	Guadalupe Regional Medical Center.....	C		
The Heart Hospital Baylor Plano.....	C L T	Hendrick Medical Center Brownwood.....	C		
The University of Texas Medical Branch Clear Lake Campus.....	C E L	Hunt Regional Medical Center	C		
Baptist Hospital of Southeast Texas.....	L T	Matagorda Regional Medical Center	E		
Baylor Scott & White Heart and Vascular - FW.....	C L	Medical City Frisco	C		
Baylor Scott & White Medical Center - Lakeway	C CP	Medical City Las Colinas.....	C		
Cedar Park Regional Medical Center	C CP	Medical City Lewisville.....	C		
CHI/St. Luke's Lakeside Hospital.....	C E	Medical City McKinney.....	C		
CHRISTUS Hospital - St. Elizabeth	C CP	Medical City North Hills.....	C		
CHRISTUS San Marcos	C CP	Memorial Hermann Cypress Hospital.....	CP		
CHRISTUS Santa Rosa Hospital - Medical Center.....	C CP	Methodist Speciality and Transplant Hospital.....	C		
Corpus Christi Medical Center - Doctors Regional	CP CP	Nacogdoches Medical Center	C		
Doctors Hospital of Laredo.....	E CP	Nacogdoches Memorial Hospital.....	E		
Harlingen Medical Center.....	C E	North Austin Medical Center.....	C		
Hendrick Medical Center South.....	C CP	North Central Baptist Hospital.....	CP		
Hospitals of Providence East Campus.....	C CP	Parkview Regional Hospital	CP		
Houston Methodist Baytown Hospital.....	C CP	Peterson Regional Medical Center.....	C		
Huntsville Memorial Hospital	C E	Texas Children's Hospital	IM		
Lake Granbury Medical Center.....	C CP	Texas Health Presbyterian Hospital Allen.....	C		
Lake Pointe Medical Center.....	C CP	The Heart Hospital Baylor Denton	C		
Medical City Alliance.....	C CP	The Hospitals of Providence Transmountain Campus.....	C		
Medical City Dallas Hospital.....	C IM	University of Texas MD Anderson Cancer Center.....	E		
Medical City Heart and Spine Hospitals.....	CP HF	University of Texas Medical Branch Clear Lake Campus.....	CP		
Medical City Plano.....	C CP	Val Verde Regional Medical Center	C		
Medical City Weatherford.....	C CP	Valley Baptist Medical Center	C		
Memorial Hermann Greater Heights Hospital.....	CP ▲	Valley Baptist Medical Center Brownsville	CP		
		Wise Health System - East Campus.....	CP		

		VERMONT	
		The University of Vermont Medical Center	
		VIRGINIA	
		Inova Fairfax Medical Campus IHVI.....	
		Winchester Medical Center Inc.	
		Carilion Roanoke Memorial Hospital.....	
		VCU - Medical College of Virginia.....	
		Lewis Gale Medical Center	
		Sentara Norfolk General Hospital	
		Sentara Rockingham Memorial Hospital.....	
		Augusta Health.....	
		Bon Secours Southside Medical Center	
		Centra Lynchburg General Hospital	
		Chesapeake Regional Medical Center.....	
		CJW Medical Center	
		Sentara Martha Jefferson Hospital	
		Sentara Williamsburg Regional Medical Center.....	
		SOVAH Health - Danville.....	
		University of Virginia Medical Center.....	
		Virginia Hospital Center	
		Bon Secours Maryview Medical Center	
		Inova Alexandria Hospital	
		Inova Loudoun Hospital.....	
		Reston Hospital Center.....	
		Riverside Regional Medical Center...	
		Sentara Careplex Hospital	
		Sentara Halifax Regional Hospital	
		Sentara Leigh Hospital.....	

Continues on next page



THE HEART OF QUALITY PATIENT CARE

Sentara Northern Virginia Medical Center.....	C CP E ▲	PeaceHealth Southwest Medical Center.....	C L T	Aurora BayCare Medical Center...	A C CP CL ▲
Sentara Virginia Beach General Hospital.....	C CP E ▲	Providence St. Peter Hospital.....	C L T	Aurora Grafton.....	A C CP CP ▲
Bon Secours - Memorial Regional Medical Center.....	C L T	University of Washington Medical Center - Montlake.....	C L T	ThedaCare Regional Medical Center.....	C E L T CL
Bon Secours Mercy Health - St. Mary's Hospital.....	C L T	Evergreen Healthcare.....	C E	Aurora Medical Center Summit.....	C CP CP ▲
Henrico Doctors Hospital.....	C L T	Kadlec Regional Medical Center.....	C T	SSM Health St. Mary's Hospital - Madison.....	C CP L T
LewisGale Hospital Montgomery.....	C CP CP	Legacy Salmon Creek Medical Center.....	C E	UnityPoint Health - Meriter.....	C CP E ▲
Mary Washington Healthcare.....	C L T	Astria Sunnyside Hospital.....	C	Waukesha Memorial Hospital.....	A C L T
Sentara Obici Hospital.....	C CP E	Capital Medical Center.....	C	Ascension NE Wisconsin St. Elizabeth Hospital.....	C E T
Sentara Princess Anne Hospital.....	C CP ▲	Grays Harbor Community Hospital.....	C	Aspirus Wausau Hospital.....	C L T
SOVAH Health - Martinsville.....	C CP HF	Providence St. Mary's Medical Center.....	C	Bellin Memorial Hospital.....	C L T
Carilion New River Valley Medical Center.....	C E	Seattle Children's Hospital.....	IM	Froedtert Hospital.....	C L T
Children's Hospital of The King's Daughters, Inc.....	E IM	St. John Medical Center.....	C	Holy Family Memorial.....	C CP ▲
Clinch Valley Medical Center.....	C CP	Swedish Edmonds Hospital.....	C	HSHT St. Vincent Hospital.....	C L T
Fauquier Health.....	C E	Swedish Medical Center - Issaquah.....	C	Mayo Clinic Health System - Eau Claire Hospital.....	C L T
Johnston Memorial Hospital.....	C CP	Trios Health.....	C	ProHealth Waukesha Memorial Hospital.....	CL CP HF
Spotsylvania Regional Medical Center.....	C CP	University of Washington Medical Center - Northwest.....	C	St. Agnes Hospital.....	C L T
Stonesprings Hospital Center.....	C CP	Valley Medical Center.....	C	Aurora Medical Center in Kenosha.....	C CP
Warren Memorial Hospital.....	C CP	Virginia Mason Memorial.....	C	Beloit Memorial Hospital.....	C E
Bon Secours Southampton Medical Center.....	CP	VMFH St. Anne Hospital.....	C	Froedtert South, Inc.....	C E
Bon Secours St. Francis Medical Center.....	C	VMFH St. Francis Hospital.....	C	HSHT Sacred Heart Hospital.....	C T
Centra Southside Community Hospital.....	C	WEST VIRGINIA		Marshfield Medical Center - Eau Claire.....	C CP
Fauquier Hospital.....	CP	Mon Health Medical Center.....	C CP E L T AF CP ▲	The Monroe Clinic.....	C E
LewisGale Hospital Alleghany.....	CP	Wheeling Hospital.....	A C CP E L T CP ▲	Watertown Regional Medical Center.....	C CP
LewisGale Hospital Pulaski.....	C	Camden - Clark Medical Center.....	C CP E CL CP ▲	Wheaton Franciscan Healthcare - All Saints, Inc.....	C E
Mary Immaculate Hospital.....	CP	St. Mary's Medical Center.....	C CP L T CP ▲	Wheaton Franciscan Healthcare - Franklin, Inc.....	C E
Page Memorial Hospital.....	CP	Charleston Area Medical Center.....	C CP E L T	Wheaton Franciscan Healthcare - St. Francis, Inc.....	C E
Riverside Walter Reed Hospital.....	CP	Raleigh General Hospital.....	C CP E CP	Wheaton Franciscan Inc. - Elmbrook Memorial Campus.....	C E
Shenandoah Memorial Hospital.....	CP	WVU Medicine.....	C E L T	Ascension Columbia St. Mary's Hospital Milwaukee.....	CP
Stafford Hospital.....	C	CAMC Memorial Hospital.....	CL CP TV	Ascension NE Wisconsin Mercy Hospital.....	C
Twin County Regional Healthcare.....	CP	Berkeley Medical Center.....	C E	Aspirus Stevens Point Hospital.....	C
UVA Prince William Medical Center.....	C	St. Francis Hospital.....	C E	Aurora Medical Center Oshkosh.....	C
Virginia Commonwealth University Medical Center.....	CP	Thomas Memorial Hospital.....	C E	Aurora Sheboygan Memorial Medical Center.....	C
Wythe County Community Hospital.....	CP	Weirton Medical Center.....	C E	Children's Wisconsin.....	CP
WASHINGTON		WVU Medicine United Hospital Center.....	C E	Community Memorial Hospital.....	C
Deaconess Hospital MultiCare Health System.....	C CP E L T ▲	Beckley Appalachian Regional Healthcare.....	C	HSHT St. Mary's Hospital.....	C
MultiCare Tacoma General Hospital.....	C CP E L T ▲	Logan Regional Medical Center.....	CP	Mayo Clinic Health System - Franciscan Healthcare.....	C
Virginia Mason Medical Center.....	C CP L T ▲	Princeton Community Hospital.....	C	Mercyhealth Hospital and Medical Center - Walworth.....	CP
PeaceHealth St. Joseph Medical Center.....	C L T TV	Reynolds Memorial Hospital.....	C	Oconomowoc Memorial Hospital.....	C
Providence Regional Medical Center Everett.....	A C L T	WISCONSIN		Wheaton Franciscan - St. Joseph Campus.....	C
Providence Sacred Heart Medical Center.....	C IM L T	Aurora St. Luke's Medical Center.....	A C CP L T CP TV ▲	WYOMING	
Swedish Health Services.....	A C L T	Marshfield Medical Center.....	A C CP E L T ▲	Wyoming Medical Center.....	C CP E L T ▲
VMFH St. Joseph Medical Center.....	A C L T	UW Health.....	C CP E IM L T ▲	Campbell County Health.....	C CP ▲
VMFH St. Michael Medical Center.....	A C L T	Ascension Columbia St. Mary's Hospital Milwaukee.....	C CP E L T ▲	Sheridan Memorial Hospital.....	C E HF
Confluence Health Central Washington Hospital & Clinics.....	C E T	Gundersen Lutheran Health System.....	C CP E L T	Cheyenne Regional Medical Center.....	C L
MultiCare Auburn Medical Center.....	C CP ▲	Marshfield Medical Center - Weston.....	A C CP E T ▲	Evanston Regional Hospital.....	CP
MultiCare Good Samaritan Hospital.....	C CP ▲	Mercy Hospital and Trauma Center.....	C CP E L T CP	SageWest Health Care - Riverton.....	CP
Overlake Hospital Medical Center.....	C E T	Ascension Columbia St. Mary's Hospital Ozaukee.....	C CP E CP ▲	SageWest Healthcare - Lander.....	CP

To learn more about hospitals and centers near you, visit [FindYourHeartaHome.org](https://www.findyourheartathome.org).



Do You Or a Loved One Need Heart Care?



FindYourHeart a
Home™

Connecting heart patients with the right hospital

Use the American College of Cardiology's online tool to...



SEARCH
over 700 hospitals



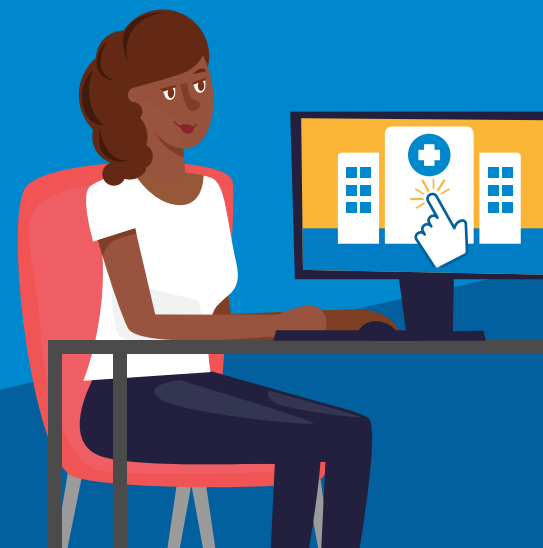
COMPARE
their performance



SELECT
the right hospital

**DON'T
DELAY YOUR
CARE!**

Remember that hospitals have safety measures to protect patients from virus infection.



**AMERICAN
COLLEGE of
CARDIOLOGY®**

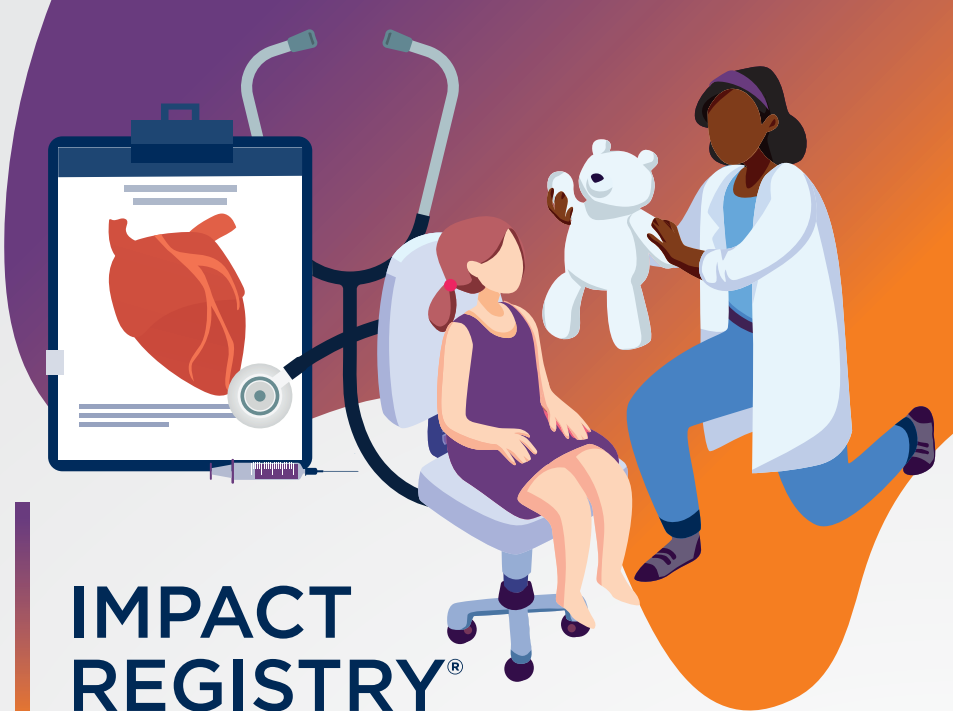
Advancing Heart Care Worldwide

©2022 American College of Cardiology B22091

Get Started at [FindYourHeartaHome.org](https://www.findyourheartathome.org)

ACPC QUALITY NETWORK

IMPACT REGISTRY®



The ACC's comprehensive offerings of adult and pediatric congenital heart disease (CHD) programs drive quality improvement and help advance optimal patient care for children and adults with heart disease. Choose one of these top hospitals and clinics that deliver the best heart-focused care and are dedicated to treatment of patients of all ages.

Adult Congenital & Pediatric Cardiology (ACPC) Quality Network™

is a national network of CHD clinics dedicated to developing best practices and advancing standards for patient care.



Boston Children's Hospital
Boston, MA

Cardiology Care for Children
Lancaster, PA

Child Cardiology Associates
Fairfax, VA

Children's Healthcare of Atlanta
Atlanta, GA

Children's Hearts
Nashville, TN

Children's Hospital Colorado
Aurora, CO

Children's Hospital of Los Angeles
Los Angeles, CA

Children's Hospital Medical Center of Akron
Akron, OH

Children's Hospital of New Orleans
New Orleans, LA

Children's Hospital of Orange County
Orange, CA

Children's Hospital of Philadelphia
Philadelphia, PA

Children's Mercy Kansas City
Kansas City, MO

Children's National Medical Center
Washington, DC

Cincinnati Children's Hospital Medical Center
Cincinnati, OH

Eastern Maine Medical Center
Bangor, ME

Intermountain Primary Children's Hospital
Salt Lake City, UT

Johns Hopkins All Children's Hospital, Inc
St. Petersburg, FL

Le Bonheur Children's Hospital
Memphis, TN

Lee Health - HealthPark Medical Center
Fort Myers, FL

Lucile S. Packard Children's Hospital at Stanford University
Palo Alto, CA

Lurie Children's Hospital of Chicago
Chicago, IL

Mayo Clinic Hospital - Saint Mary's Campus
Rochester, MN

Miami Children's Health System
Miami, FL

Nationwide Children's Hospital
Columbus, OH

Nemours Children's Health
Wilmington, DE

New York - Presbyterian Weill Cornell Medical Center
New York, NY

NorthWest Congenital Heart Care
Tacoma, WA

Pediatric and Congenital Cardiology Associates
Austin, TX

Pediatrix Cardiology Associates of San Antonio
San Antonio, TX

Pediatric Cardiology Associates and Tampa Bay Adult Congenital Heart Center
St. Petersburg, FL

Pediatrix Cardiology of Broward
West Palm Beach, FL

Pediatrix Cardiology of Dallas
Dallas, TX

Pediatrix Cardiology of North Texas
Dallas, TX

Phoenix Children's Hospital
Phoenix, AZ

Rainbow Babies & Children's Hospital
Cleveland, OH

Riley Hospital for Children Indiana University Health
Indianapolis, IN

Rocky Mountain Pediatric Cardiology
Denver, CO

Sanger Heart & Vascular Institute
Charlotte, NC

Seattle Children's Hospital
Seattle, WA

Texas Children's Hospital
Houston, TX

The Cleveland Clinic Foundation
Cleveland, OH

The Mount Sinai Medical Center
New York, NY

University of Kentucky
Lexington, KY

University of Maryland Medical Center Cardiology
Baltimore, MD

UCSF Benioff Children's Hospital
San Francisco, CA

UPMC Children's Hospital of Pittsburgh
Pittsburgh, PA

Upstate Golisano Children's Hospital
Syracuse, NY

Wellstar Kennestone Regional Medical Center
Marietta, GA

The IMPACT Registry®

assesses key information of CHD patients undergoing diagnosis catheterizations and catheter-based care. The Physician Champion is listed with the hospital.



Adventhealth Orlando
Matthew Zussman, MD

Advocate Children's Hospital Oak Lawn
Alexander Javojs, MD

Arkansas Children's Hospital
Michael Angtuaco, MD

Ascension St. Vincent Hospital
Brenda Erner, MD

Atrium Health's Carolinas Medical Center
Joseph Paolillo, MD

Boston Children's Hospital
Brian Quinn, MD

Cedars - Sinai Health Systems
Evan Zahn, MD

Children's Healthcare of Atlanta
Dennis Kim, MD, PHD

Children's Hospital and Medical Center - Omaha
Christopher Curzon, DO

Children's Hospital Colorado
Ryan Leahy, MD

Children's Hospital Medical Center of Akron
David Waight, MD

Children's Hospital of Los Angeles
Neil Patel, MD

Children's Hospital of New Orleans
Marla Johnston, MD

Children's Hospital of Orange County
Michael Recto, MD

Children's Hospital of Philadelphia
Jonathan Rome, MD

Children's Hospital of San Antonio
Srinath Gowda, MD

Children's Hospital of the Kings Daughters, Inc.
Michael Vance, MD

Children's Medical Center of Dallas
Surendranath Veeram Reddy, MD

Children's Mercy Kansas City
Stephen Kaine, MD

Children's Minnesota
Marko Vezmar, MD

Children's National Medical Center
Joshua Kanter, MD

Children's Wisconsin
Susan Foerster, MD

Cincinnati Children's Hospital Medical Center
Shabana Shahanavaz, MD

Cleveland Clinic
Bradley Martino, MD

Cohen Children's Medical Center
Dipak Kholwadwala, MD

Connecticut Children's Medical Center
Cesar Mesia, MD

Cook Children's Medical Center
Deborah Schutte, MD

Dell Children's Medical Center of Central Texas
Byron Holt, MD

Duke University Hospital
Gregory Fleming, MD

Geisinger Medical Center
Robert Mangano, MD

Indiana University Health Methodist Hospital
Georges Ephrem, MD

Inova Fairfax Medical Campus IHVI
Harvey Sherber, MD

Intermountain Primary Children's Hospital
Robert Gray, MD

Jackson Memorial Hospital - Jackson Health System
Satinder Sandhu, MD

Joe Dimaggio Children's Hospital
K Chan, MD

Johns Hopkins All Children's Hospital, Inc
Jim Thompson, MD

Johns Hopkins Hospital
John Thomson, MD

Kaiser Permanente Oakland Medical Center
Luis Alesandro Larrazabal Martinez, MD

Le Bonheur Children's Hospital
Shyam Sathanandam, MD

Loma Linda University Medical Center
Brent Gordon, MD

Lucile S. Packard Children's Hospital at Stanford University
Kara Motonaga, MD

Lurie Children's Hospital of Chicago
Alan Nugent, MD

Maine Medical Center
Jon Donnelly, MD

Massachusetts General Hospital
Ignacio Inglessis, MD

Mayo Clinic Hospital - Saint Mary's Campus
Allison Cabalka, MD

Medical City Dallas Hospital
Vivian Dimas, MD

Medical University of South Carolina
Varsha Bandisod, MD

Memorial Hermann Hospital - TMC
Kiran Mallula, MD

MemorialCare Long Beach Medical Center
Saar Danon, MD

Methodist Hospital/Methodist Children's Hospital
Rolando Zamorasalinas, MD

Miami Children's Health System
Lourdes Prieto, MD

Michigan Medicine
Wendy Whiteside, MD

Montefiore Medical Center
Nicole Sutton, MD

Nationwide Children's Hospital
Darren Berman, MD

Nemours Children's Health
Wolfgang Radtke, MD

Nemours Children's Hospital
Mike Bingle, MD

New York - Presbyterian Weill Cornell Medical Center
Ralf Holzer, MD

New York Presbyterian - Morgan Stanley Children's
Matthew Crystal, MD

Newark Beth Israel Medical Center
Rajiv Verma, MD

Norton Children's Hospital
Edward Kim, MD

NYU Langone Health - Tisch Hospital
Physician Michael Argilla, MD

Ochsner Clinic Foundation
Ivory Crittendon, MD

Oregon Health & Science University
Ali Mumford, MD

Orlando Health
David Nykanen, MD

OSF Healthcare Saint Francis Medical Center
Priti Patel, MD

OU Medicine, Inc.
Charles Sperrazza, MD

Penn State Hershey Medical Center
Howard Weber, MD

Phoenix Children's Hospital
Joseph Graziano, MD

Presbyterian/St. Luke's Medical Center
David Miller, MD

Providence Sacred Heart Medical Center
Carl Garabedian, MD

Rady Children's Hospital - San Diego
Howaida Elsaid, MD

Rainbow Babies & Children's Hospital
Martin Bocks, MD

Riley Hospital for Children Indiana University Health
Larry Markham, MD

Seattle Children's Hospital
Agustin Rubio, MD

Spectrum Health
Joseph Vettukattil, MD

SSM Cardinal Glennon Children's Medical
Robert Petersen, MD

St. Christopher's Hospital for Children
Boban Abraham, MD

St. Joseph's & St. Joseph's Children's Hospitals
Jeremy Ringewald, MD

St. Louis Children's Hospital
David Balzer, MD

Straub Medical Center
James Sim, MD

Sutter Medical Center - Sacramento
Peihsiu Huang, MD

Texas Children's Hospital
Gary Stapleton, MD

The Mount Sinai Medical Center
Barry Love, MD

UC San Diego Health System Sulpizio Cardiovascular Center
Laith Alshawabkeh, MD

UCSF Benioff Children's Hospitals, Oakland
Suzanne Strong, MD

UF Health Shands Hospital
James Fudge, MD

UNC Medical Center
Elman Frantz, MD

University of California (UCLA)
Mark Sklansky, MD

University of California Davis Medical Center
Frank Ing, MD

University of California San Francisco Medical Center
Phillip Moore, MD

University of Iowa Hospitals and Clinics
Osamah Aldoss, MD

University of Kentucky
Liliana Terziyskavlieva, MD

University of Maryland Medical Center Cardiology
Sudhir Vashist, MD, MBBS

University of Minnesota Health, Heart Care
Gurumurthy Hiremath, MD

University of Mississippi Medical Center
Libby Poag, MD

UPMC Children's Hospital of Pittsburgh
Jackie Kreutzer, MD

UR Medicine Strong Memorial Hospital
Rajiv Devanagondi, MD

UW Health
Luke Lamers, MD

Valley Children's Hospital
Carl Owada, MD

VCU - Medical College of Virginia
Kyongjin Lee, MD

Vidant Medical Center
Dennis Morris, MD

Wake Forest Baptist Health
Derek Williams, DO

Wayne State University - Children's Hospital of MI
Thomas Forbes, MD

Westchester County Health Care Corp.
Markus Erb, MD

Wolfson Children's Hospital
Robert English, MD

Yale New Haven Hospital
Jeremy Asnes, MD

BC Children's Hospital
Shubhayan Sanatani, MD

CHU Sainte - Justine
Jeanluc Bigras, MD

Stollery Children's Hospital
Elina Williams, MD

The Hospital for Sick Children
Audrey Marshall, MD



Congratulations to the Platinum Recipients of the

CHEST PAIN – MI REGISTRY™

2022 Performance Achievement Award

Hospitals receiving this award have demonstrated the highest standards of care for heart attack patients and are recognized by the Chest Pain – MI Registry for their sustained achievement and commitment to excellence with the Platinum Performance Achievement Award. View all award recipients in the “Heart of Quality Patient Care” insert in this issue of *U.S. News & World Report*. Look for the hospitals that have the triangle; ▲ Platinum, ▲ Gold, and ▲ Silver.



Scan this QR code to find the full listing of Performance Achievement Award recipients.

Providence Alaska Medical Center
Anchorage, AK

CHI St. Vincent Hospital Hot Springs
Hot Springs, AR

Mercy Health System of Northwestern Arkansas
Rogers, AR

NEA Baptist Memorial Hospital
Jonesboro, AR

CHI St.Vincent Infirmary
Little Rock, AR

Adventist Health Bakersfield
Bakersfield, CA

Dignity Health St. Joseph's Medical Center
Stockton, CA

El Camino Health
Mountain View, CA

Memorial Medical Center Modesto
Modesto, CA

Palomar Medical Center
Escondido, CA

Pomona Valley Hospital Medical Center
Pomon, CA

Salinas Valley Memorial Healthcare System
Salinas, CA

Temecula Valley Hospital
Temecula, CA

California Pacific Medical Center
San Francisco, CA

Littleton Adventist Hospital
Littleton, CO

Medical Center of Aurora
Aurora, CO

Medical Center of the Rockies
Loveland, CO

Mercy Regional Medical Center
Durango, CO

National Jewish/SCL Saint Joseph Hospital
Denver, CO

North Colorado Medical Center
Greeley, CO

Parker Adventist Hospital
Parker, CO

Parkview Medical Center
Pueblo, CO

Poudre Valley Hospital
Fort Collins, CO

Saint Mary's Hospital and Regional Medical Center
Grand Junction, CO

SCL Health Good Samaritan Medical Center
Lafayette, CO

Sky Ridge Medical Center
Lone Tree, CO

St. Anthony Hospital
Lakewood, CO

Swedish Medical Center
Englewood, CO

Lutheran Medical Center
Wheat Ridge, CO

McKee Medical Center
Loveland, CO

Platte Valley Medical Center
Brighton, CO

Christiana Care Health System
Newark, DE

The George Washington University Hospital
Washington, DC

Bayfront Health Saint Petersburg
St. Petersburg, FL

UF Health Jacksonville
Jacksonville, FL

Piedmont Fayette Hospital
Fayetteville, GA

Piedmont Henry Hospital
Stockbridge, GA

Piedmont Newnan Hospital
Newnan, GA

St. Joseph's Hospital
Savannah,GA

St. Mary's Health Care Systems
Athens, GA

Carle BroMenn Medical Center
Normal, IL

Memorial Hospital Carbondale
Carbondale, IL

Northwestern Lake Forest Hospital
Lake Forest, IL

Northwestern Medicine Huntley Hospital
Huntley, IL

Northwestern Medicine McHenry Hospital
McHenry, IL

Riverside Health Care
Kankakee, IL

Rush - Copley Hospital
Aurora, IL

Loyola University Medical Center
Maywood, IL

Memorial Hospital Shiloh
Shiloh, IL

OSF HealthCare Saint Francis Medical Center
Peoria, IL

OSF Saint Joseph Medical Center
Bloomington, IL

Protestant Memorial Medical Center
Belleville, IL

Columbus Regional Hospital
Columbus, IN

Deaconess Gateway Heart Hospital
Newburgh, IN

Deaconess Hospital
Evansville, IN

Indiana University Health Arnett Hospital
Lafayette, IN

Indiana University Health Bloomington, IN

Indiana University Health Methodist Hospital
Indianapolis, IN

Indiana University Health North Hospital
Carmel, IN

Indiana University Health Saxony Hospital
Fishers, IN

Indiana University Health West Hospital
Avon, IN

Goshen Hospital
Goshen, IN

Indiana University Health Ball Memorial Hospital
Muncie, IN

Allen Memorial Hospital
Waterloo, IA

St. Luke's Hospital
Cedar Rapids, IA

Trinity Regional Medical Center
Ft. Dodge, IA

UnityPoint Health - St. Luke's Sioux City
Sioux City, IA

Mercy Iowa City
Iowa City, IA

MercyOne Siouxland Medical Center
Sioux City, IA

Trinity Medical Center - Bettendorf
Bettendorf, IA

Advent Health Shawnee Mission
Shawnee Mission, KS

Hays Medical Center
Hays, KS

Olathe Medical Center
Olathe, KS

Stormont Vail Health
Topeka, KS

University of Kansas Health System St. Francis Campus
Topeka, KS

Providence Medical Center
Kansas City, KS

Baptist Health Corbin
Corbin, KY

Baptist Health Lexington
Lexington, KY

Baptist Health Louisville
Louisville, KY

Pikeville Medical Center
Pikeville, KY

Saint Elizabeth Healthcare Edgewood
Edgewood, KY

Christus St. Patrick Hospital
Lake Charles, LA

St. Tammany Health System
Covington, LA

Luminis Health Anne Arundel Medical Center
Annapolis, MD

UPMC Western Maryland
Cumberland, MD

Spectrum Health
Grand Rapids, MI

MidMichigan Medical Center
Midland, MI

CentraCare Heart & Vascular Center
Saint Cloud, MN

Essentia Health - St. Mary's Medical Center
Duluth, MN

Anderson Regional Medical Center
Meridian, MS

Baptist Memorial Hospital - Desoto
Southaven, MS

Baptist Memorial Hospital - Golden Triangle
Columbus, MS

Baptist Memorial Hospital - North Mississippi
Oxford, MS

Forrest General Hospital
Hattiesburg, MS

Magnolia Regional Health Center
Corinth, MS

Merit Health Wesley Medical Center
Hattiesburg, MS

Mississippi Baptist Medical Center
Jackson, MS

North Mississippi Medical Center
Tupelo, MS

Barnes Jewish Hospital - Washington University
Saint Louis, MO

Christian Hospital BJC Healthcare
St. Louis, MO

Cox Medical Center Branson
Branson, MO

Freeman Health System
Joplin, MO

Heartland Regional Medical Center
St. Joseph, MO

Liberty Hospital
Liberty, MO

Mercy Hospital Joplin
Joplin, MO

Mercy Hospital Springfield
Springfield, MO

Mercy Hospital St. Louis
St. Louis, MO

North Kansas City Hospital
North Kansas City, MO

Research Medical Center
Kansas City, MO

Southeast Missouri Hospital
Cape Girardeau, MO

St. Mary's Medical Center
Blue Springs, MO

Centerpoint Medical Center
Independence, MO

Saint Francis Medical Center
Cape Girardeau, MO

Logan Health
Kalispell, MT

St. James Health Care
Butte, MT

St. Vincent Healthcare
Billings, MT

Billings Clinic
Billings, MT

Nebraska Medicine
Omaha, NE

Renown Regional Medical Center
Reno, NV

Bayshore Community Hospital
Holmdel, NJ

Jersey Shore University Medical Center
Neptune, NJ

Riverview Medical Center
Red Bank, NJ

JFK Medical Center
Edison, NJ

Ocean Medical Center
Brick, NJ

Presbyterian Healthcare Services
Albuquerque, NM

Bronx Care Health System
Bronx, NY

Jamaica Hospital Medical Center
Jamaica, NY

The Mount Sinai Medical Center
New York, NY

UR Medicine Strong Memorial Hospital
Rochester, NY

Alamance Regional Medical Center
Burlington, NC

Atrium Health Cabarrus
Concord, NC

Atrium Health Pineville
Charlotte, NC

Atrium Health Carolinas Medical Center
Charlotte, NC

CarolinaEast Medical Center
New Bern, NC

Duke Raleigh Hospital
Raleigh, NC

Duke University Hospital
Durham, NC

Frye Regional Medical Center
Hickory, NC

Moses H. Cone Memorial Hospital
Greensboro, NC

Nash UNC Healthcare
Rocky Mount, NC

New Hanover Regional Medical Center
Wilmington, NC

Rex Hospital
Raleigh, NC

UNC Medical Center
Chapel Hill, NC

WakeMed Cary Hospital
Cary, NC

WakeMed Health and Hospitals
Raleigh, NC

Wayne UNC Healthcare
Goldsboro, NC

Altru Health System
Grand Forks, ND

Essentia Health - Fargo
Fargo, ND

Sanford Medical Center Bismarck
Bismarck, ND

Sanford Medical Center Fargo
Fargo, ND

Aultman Hospital
Canton, OH

Firelands Regional Medical Center
Sandusky, OH

ProMedica Toledo Hospital
Toledo, OH

Southwest General Health Center
Middleburg Heights, OH

The MetroHealth System
Cleveland, OH

University Hospitals St. John Medical Center
Westlake, OH

Asante
Medford, OR

UPMC Hanover
Hanover, PA

Butler Memorial Hospital
Butler, PA

Doylestown Hospital
Doylestown, PA

Penn State Health St. Joseph
Reading, PA

Sharon Regional Medical Center
Sharon, PA

UPMC Harrisburg
Harrisburg, PA

UPMC Memorial
York, PA

UPMC West Shore
Mechanicsburg, PA

West Penn Hospital
Pittsburgh, PA

Spartanburg Regional Healthcare System
Spartanburg, SC

AnMed Health
Anderson, SC

Bon Secours St. Francis Health System
Greenville, SC

Lexington Medical Center
West Columbia, SC

McLeod Regional Medical Center
Florence, SC

Self Regional Healthcare
Greenwood, SC

Avera Heart Hospital of South Dakota
Sioux Falls, SD

Avera St. Luke's
Aberdeen, SD

Monument Health
Rapid City, SD

Sanford USD Medical Center
Sioux Falls, SD

Tennova -Turkey Creek Medical Center
Knoxville, TN

Baptist Memorial Hospital - Memphis
Memphis, TN

Blount Memorial Hospital
Maryville, TN

Bristol Regional Medical Center
Bristol, TN

Chattanooga - Hamilton County Hospital Authority
Chattanooga, TN

Holston Valley Medical Center
Kingsport, TN

Jackson Madison County General Hospital
Jackson, TN

Methodist Hospital University
Memphis, TN

Baylor Scott & White Health
Temple, TX

Shannon Medical Center
San Angelo, TX

Tarrant County Hosp District - JPS Health Network
Fort Worth, TX

Texas Health Heart and Vascular Hospital
Arlington, TX

Texas Health Presbyterian Hospital Plano
Plano, TX

University of Texas Southwestern Medical Center
Dallas, TX

Advent Health Central Texas
Killeen, TX

Baylor Scott & White - Grapevine
Grapevine TX

Baylor Scott & White Heart and Vascular - Dallas
Dallas, TX

Baylor Scott & White Medical Center - College Station
College Station, TX

Baylor Scott & White Medical Center - Round Rock
Round Rock, TX

Baylor Scott and White All Saints Medical Center
Fort Worth, TX

CHI/Baylor St. Luke's Medical Center
Houston, TX

CHRISTUS Mother Frances Hospital
Tyler, TX

Dallas Regional Medical Center
Mesquite, TX

Harris Health System
Houston, TX

Memorial Hermann Memorial City Hospital
Houston, TX

Memorial Hermann Sugar Land
Sugar Land, TX

North Central Baptist Hospital
San Antonio, TX

Texas Health Harris Methodist Fort Worth
Fort Worth, TX

Texas Health Harris Methodist HEB
Bedford, TX

Texas Health Harris Methodist Hospital Southwest
Fort Worth, TX

The Hospitals of Providence Sierra Campus
El Paso, TX

University Health
San Antonio, TX

St. Marks Hospital/Northern Utah Healthcare Corp.
Salt Lake City, UT

University of Utah Health
Salt Lake City, UT

Inova Alexandria Hospital
Alexandria, VA

Inova Loudoun Hospital
Leesburg, VA

Sentara Martha Jefferson Hospital
Charlottesville, VA

Augusta Health
Fishersville, VA

Carilion Roanoke Memorial Hospital
Roanoke, VA

Chesapeake Regional Medical Center
Chesapeake, VA

Inova Fairfax Medical Campus IHVI
Falls Church, VA

Reston Hospital Center
Reston, VA

Sentara Careplex Hospital
Hampton, VA

Sentara Leigh Hospital
Norfolk, VA

Sentara Norfolk General Hospital
Norfolk, VA

Sentara Northern Virginia Medical Center
Woodbridge, VA

Sentara Rockingham Memorial Hospital
Harrisonburg, VA

Sentara Virginia Beach General Hospital
Virginia Beach, VA

MultiCare Good Samaritan Hospital
Puyallup, WA

MultiCare Auburn Medical Center
Auburn, WA

MultiCare Tacoma General Hospital
Tacoma, WA

Virginia Mason Medical Center
Seattle, WA

St. Mary's Medical Center
Huntington, WV

Wheeling Hospital
Wheeling, WV

Marshfield Medical Center - Weston
Weston, WI

Aurora BayCare Medical Center
Green Bay, WI

Aurora Grafton
Grafton, WI

Aurora Medical Center Summit
Summit, WI

Aurora St. Luke's Medical Center
Milwaukee, WI

Marshfield Medical Center
Marshfield, WI

UW Health
Madison, WI

Wyoming Medical Center
Casper, WY

Campbell County Health
Gillette, WY

Hospital Israelita Albert Einstein
Sao Paulo, Brazil

Tabba Heart Institute
Karachi/Gulberg, Pakistan





CELEBRATING GREAT ACHIEVEMENTS

The American College of Cardiology (ACC) applauds those hospitals and health care facilities that have achieved the HeartCARE Center designation and the work of the HeartCARE Center champions who provide leadership in earning this national distinction.

Each of the institutions demonstrates a commitment to world-class cardiovascular care through community engagement coupled with quality improvement in care delivery as well as implementation of disease and procedure-specific accreditation programs. Additionally, the constant support of many qualified and dedicated physicians and cardiovascular care team members, including credentialed Fellows and Associates of the ACC, is essential to each hospital and facility's ongoing HeartCARE Center achievement.

We recognize their collaborative efforts, purposeful focus, and passion for excellence in working to deliver exceptional care and optimal outcomes for cardiovascular patients.

Please visit [CVQuality.acc.org/HCC](https://www.CVQuality.acc.org/HCC) to learn how hospitals can achieve ACC's HeartCARE Center recognition.



NORTHEAST

Albert Einstein Medical Center Philadelphia, PA

Yolanda Huertas Nixon, ACNP-BC, CRNP, MSN, AACC
Sumeet Mainigi, MD, FACC

Chester County Hospital West Chester, PA

Ralph G. Smith, IV, RN, AACC
Timothy Boyek, MD, FACC

Conemaugh Memorial Medical Center Johnstown, PA

Shannon Boyer, RN, AACC
Cyril Nathaniel, MD, FACC

Hackensack University Medical Center Hackensack, NJ

Tammy Russo, ACNP, AACC
Michael Lim, MD, FACC

Jersey Shore University Medical Center Neptune, NJ

Jennifer Heck-Kanellidis, DNP, AACC
Brett Sealove, MD, FACC

JFK University Medical Center Edison, NJ

Jodelle Gold, ACNP-BC, AACC
Raj Ballal, MD, FACC

Lahey Hospital and Medical Center Burlington, MA

Shauna Holden, NP-C, AACC
Frederic Resnic, MD, FACC

Lawrence General Hospital Lawrence, MA

Kathy Caredeo, RN, AACC
Sunit Mukherjee, MD, FACC

Ocean University Medical Center Brick, NJ

Jennifer Heck-Kanellidis, DNP, AACC
Ali R. Moosvi, MBBS, FACC

Regional Hospital of Scranton Scranton, PA

Debra Jadick, NP, AACC
Sridhar Sampath-Kumar, MD, FACC

Riverview Medical Center Red Bank, NJ

Jennifer Heck-Kanellidis, DNP, AACC
Shaddy K. Younan, MD, FACC

St. Elizabeth Medical Center Utica, NY

Stephanie Mathias, CCRN, AACC
Michael W. Kelberman, MD, FACC

MIDWEST

Bryan Medical Center Lincoln, NE

Sarah Schroeder, NP, AACC
John Steuter, MD, FACC

Indiana University Health Methodist Hospital Indianapolis, IN

Andrea Price, CPHQ, RCIS, AACC
Richard Kovacs, MD, MACC

Lutheran Hospital Fort Wayne, IN

Amanda Lutter, AGPCNP-BC, AACC
Vijay Chilakamarri, MD, FACC

Parkview Heart Institute Fort Wayne, IN

Angela Starkey, NP, AACC
Patrick B. Gregory, MD, FACC

Spectrum Health Butterworth Hospital Grand Rapids, MI

John Mulder, IV, MPAS, AACC
David H. W. Wohns, MD, FACC

SOUTH

AdventHealth Carrollwood Tampa, FL

Joy Viars, ARNP, AACC
Humberto Coto, MD, FACC

AdventHealth Dade City Dade City, FL

Christy N. Burkhart, BSN, CCRN, RN, AACC
Tun Aung, MBBS, FACC

AdventHealth Ocala Ocala, FL

Lynn Smith, RN, AACC
Robert Feldman, MD, FACC

AdventHealth Sebring Sebring, FL

James E. Leicht, RCIS, AACC
Deepti Bhandare, MD, FACC

AdventHealth Tampa Tampa, FL

Richard N. Dance, PharmD, AACC
Charles Lambert, MD, PhD, MBA, FACC

AdventHealth Wesley Chapel Wesley Chapel, FL

Allison K. Sutton, APRN, FNP-C, AACC
Asad Sawar, MBBS, FACC

AdventHealth Zephyrhills Zephyrhills, FL

Christy N. Burkhart, BSN, CCRN, RN, AACC
Tun Aung, MBBS, FACC

Baptist Health Lexington Lexington, KY

Megan C. Switzer, NP, AACC
Azhar Aslam, MBBS, FACC

Baptist Health Paducah Paducah, KY

Blair Lane Brockman, NP, AACC
Craig Beavers, PharmD, FACC

Bayhealth Medical Center Kent Campus Dover, DE

Benjamin Louis Collins, MBA, BSN, AACC
John Shuck, MD, FACC

Baylor St. Luke's Medical Center Houston, TX

Lisa Wall, AGPCNP-BC, NP-C, AACC
Emerson Perin, MD, FACC

CarolinaEast Medical Center New Bern, NC

Laura Nicole Peters, BS, RT, AACC
Alex Kirby, MD, FACC

CHI St. Luke's Health Memorial Lufkin Lufkin, TX

Jamie Huckabee, FNP-C, AACC
Ravinder Bachireddy, MBBS, FACC

Christiana Care Health Services Newark, DE

Jennifer Oldham, MSN, RN, AACC
Neil Wimmer, MD, FACC

CHRISTUS Mother Frances Hospital - Tyler Tyler, TX

Jamie Moore, RN, AACC
James Hoff, MD, FACC

CHRISTUS Ochsner St. Patrick Hospital Lake Charles, LA

Anna Landry, NP, AACC
Michael Turner, MD, FACC

Christus St. Frances Cabrini Hospital Alexandria, LA

Erika McCormick, BSN, CCRN, AACC
Reymond Meadaa, MD, FACC

Frye Regional Medical Center Hickory, NC

Seth Call, PA-C, AACC
Vincent Patrone, MD, FACC

Jackson-Madison County General Hospital Jackson, TN

Dylan Wilson, BCPS, PharmD, AACC
John Baker, MD, FACC

King's Daughters Medical Center Ashland, KY

Kristie Turkey, APRN, AACC
Sandeep Krishnan, MD, FACC

Lexington Medical Center West Columbia, SC

Dawn Crumpton, BSN, RN, AACC
Robert Malanuk, MD, FACC

Methodist Texsan Hospital San Antonio, TX

Michael Hendricks, MBA, RN, AACC
Obinna Isiguzo, MBBS, FACC

Mon Health Medical Center Morgantown, WV

Denise Palmer, RN, AACC
Bradford E. Warden, MD, FACC

Norton Audubon Hospital Louisville, KY

Robert Rogers, APRN, AACC
Ibrahim Fahsah, MD, FACC

Spartanburg Medical Center Spartanburg, SC

Jennifer Smith, MSN, RN, AACC
Nalin K. Srivastava, MD, FACC

The Hospitals of Providence Sierra Campus El Paso, TX

Laura Wilson, AGACNP-BC, AACC
Edward R. Assi, DO, FACC

WVU Medicine Camden Clark Medical Center Parkersburg, WV

Kristina Brooks, DNP, AACC
David A. Gnegy, MD, FACC

WEST

Adventist Health and Rideout Marysville, CA

Eric Cooper, BSN, MPA, NE-BC, RN-BC, AACC
Rajinder Singh, MBBS, FACC

Rose Medical Center Denver, CO

Lauren Meehan, MSN, AACC
Michael R. Wahl, MD, FACC

Saint Joseph Hospital Denver, CO

Jennifer Lynch, APRN, AACC
Jake Michael Chanin, MD, MS, FACC

Saint Mary's Regional Medical Center Reno, NV

Rachael Coe, RN-BC, AACC
Devang M. Desai, MBBS, FACC

The Medical Center of Aurora Aurora, CO

Linda Pilon, CCRN, MSN, NE-BC, AACC
Nelson A. Prager, MD, FACC

UCHealth Memorial Hospital Colorado Springs, CO

Dawn Lovejoy, RN, AACC
Christopher Manhart, DO, FACC

To find a hospital or facility that participates in ACC's quality improvement efforts or to find the right hospital to meet your needs, please visit

[CardioSmart.org/FindYourHeartaHome](https://www.CardioSmart.org/FindYourHeartaHome)



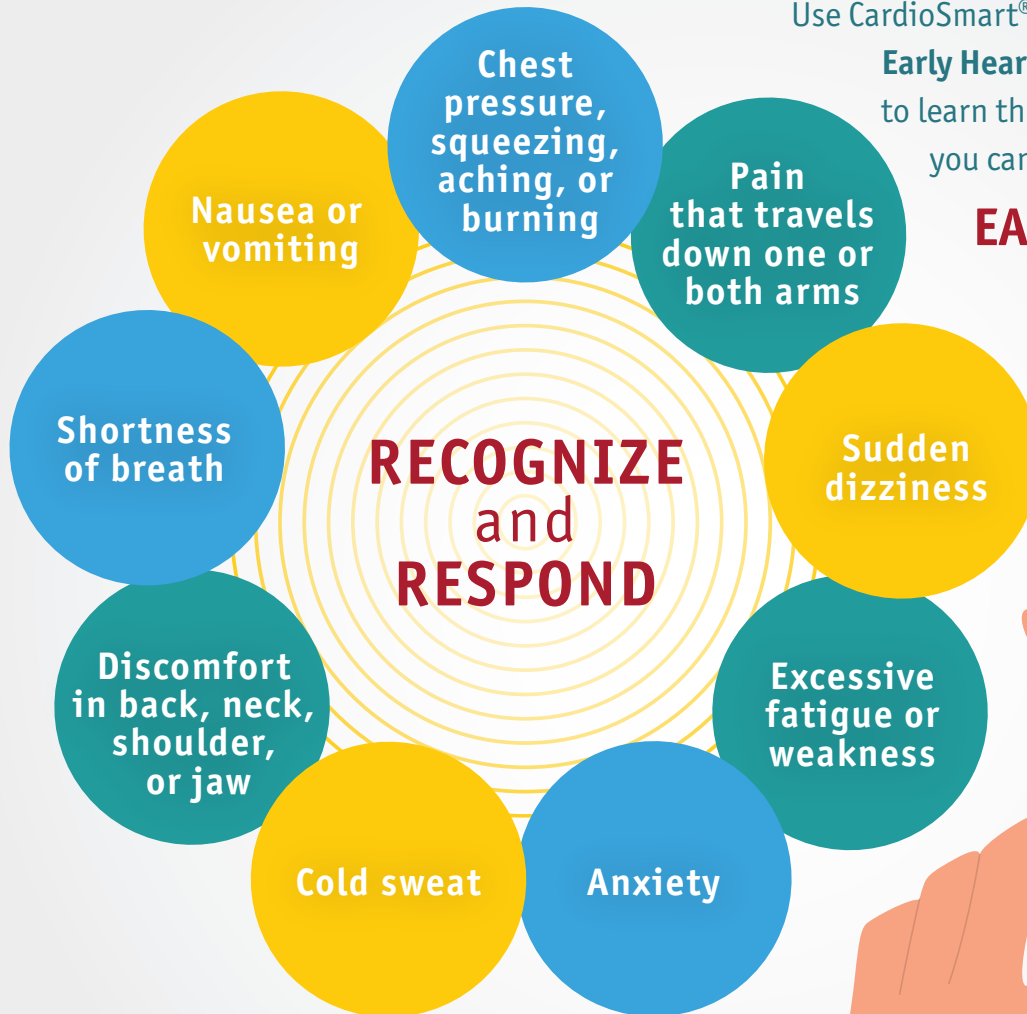
RECOGNIZE & RESPOND

Heart Attack

Do You Know the Signs of a Heart Attack?

Use CardioSmart® patient tools, including **Early Heart Attack Care™ (EHAC®)**, to learn the signs and symptoms so you can recognize and respond.

**EARLY TREATMENT
SAVES LIVES!**



The American College of Cardiology works with **Accredited and Certified Chest Pain Centers** across the U.S. to improve the diagnosis and care of patients with heart attack symptoms.

Find a center in your community and access free EHAC training videos and other resources at [CardioSmart.org/EHAC](https://www.CardioSmart.org/EHAC)



**AMERICAN
COLLEGE of
CARDIOLOGY®**