

PINNACLE Registry[®]

Practice-Level Executive Summary Report PINNACLE Registry[®] Metrics

Sample Practice

2013Q4

American College of Cardiology Foundation
National Cardiovascular Data Registry[®]

800-257-4737

ncdr.com/pinnacle

ncdr@acc.org

©2014, American College of Cardiology Foundation

PINNACLE Registry[®]
Practice-Level Executive Summary Report
Sample Practice
2013Q4

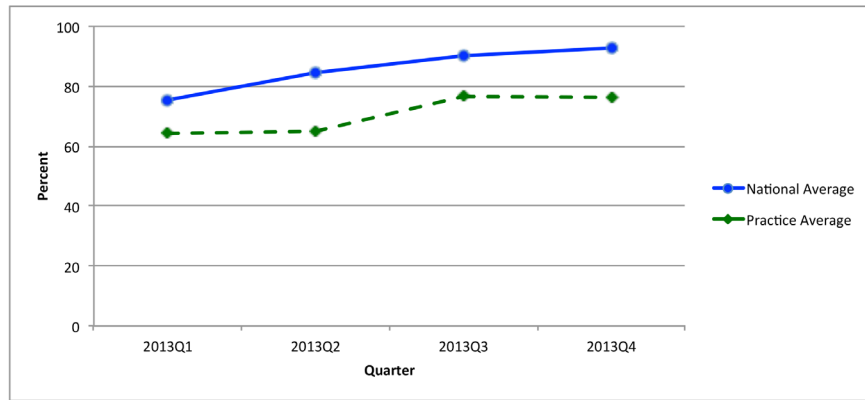
Table of Contents		
CAD Measures	3	
PINN-100	Blood Pressure Control	
PINN-100-1	Blood Pressure Control: BPs Measured under 140/90	
PINN-100-2	Blood Pressure Control: 2 or More Anti-Hypertensive Medications	
PINN-101	Lipid Control	
PINN-101-1	Lipid Control: LDL Less than 100 mg/dL	
PINN-101-2	Lipid Control: Statin Prescribed or Continued	
PINN-33	Complete Lipid Profile	
PINN-36	Statin Therapy	
PINN-102	Symptom and Activity Assessment	
PINN-103	Symptom Management	
PINN-103-1	Symptom Management: No Anginal Symptoms	
PINN-103-2	Symptom Management: Plan of Care for Anginal Symptom Control	
PINN-104	Tobacco Cessation and Intervention	3
PINN-105	Antiplatelet Therapy	5
PINN-106	Beta Blocker Therapy: Prior MI or LVSD	
PINN-107	ACE Inhibitor or ARB Therapy: Diabetes or LVSD	
PINN-108	Cardiac Rehabilitation Patient Referral from an Outpatient Setting	
Hypertension Measures	7	
PINN-120	Blood Pressure Control	7
PINN-120-1	Blood Pressure Control: BPs Measured under 140/90	
PINN-120-2	Blood Pressure Control: 2 or More Anti-Hypertensive Medications	
Heart Failure Measures	9	
PINN-140	LVEF Assessment	
PINN-141	Symptom and Activity Assessment	
PINN-142	Symptom Management	
PINN-142-1	Symptom Management: Symptoms Improved	
PINN-142-2	Symptom Management: Plan of Care of Symptoms	
PINN-143	Patient Self-Care Education	
PINN-144	Beta Blocker Therapy: LVSD	
PINN-145	ACE Inhibitor or ARB Therapy: Diabetes or LVSD	9
PINN-146	Counseling about ICD Implementation for LVSD	
Atrial Fibrillation/Flutter Measures	11	
PINN-160	Assessment of Thromboembolic Risk Factors (CHADS2)	
PINN-161	Chronic Anticoagulation Therapy	11
Other Measures		
PINN-14	Advanced Care Plan	

PINN-104 Tobacco Cessation and Intervention

Percentage of patients aged >=18 years with a diagnosis of coronary artery disease seen within a 12-month period who were screened for tobacco use AND received tobacco-cessation counseling if identified as tobacco users (ACC/AHA/AMA-PCPI)

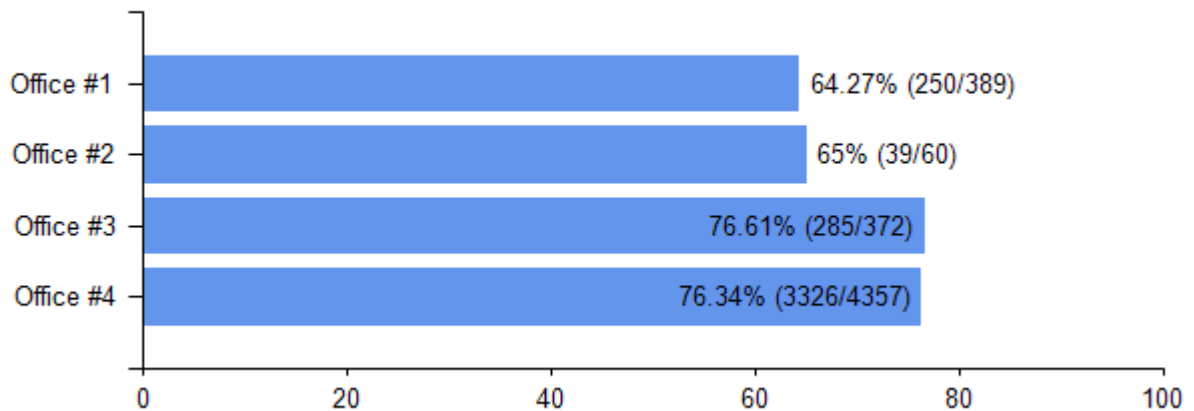
[View Measure Scorecard](#)

Practice Performance

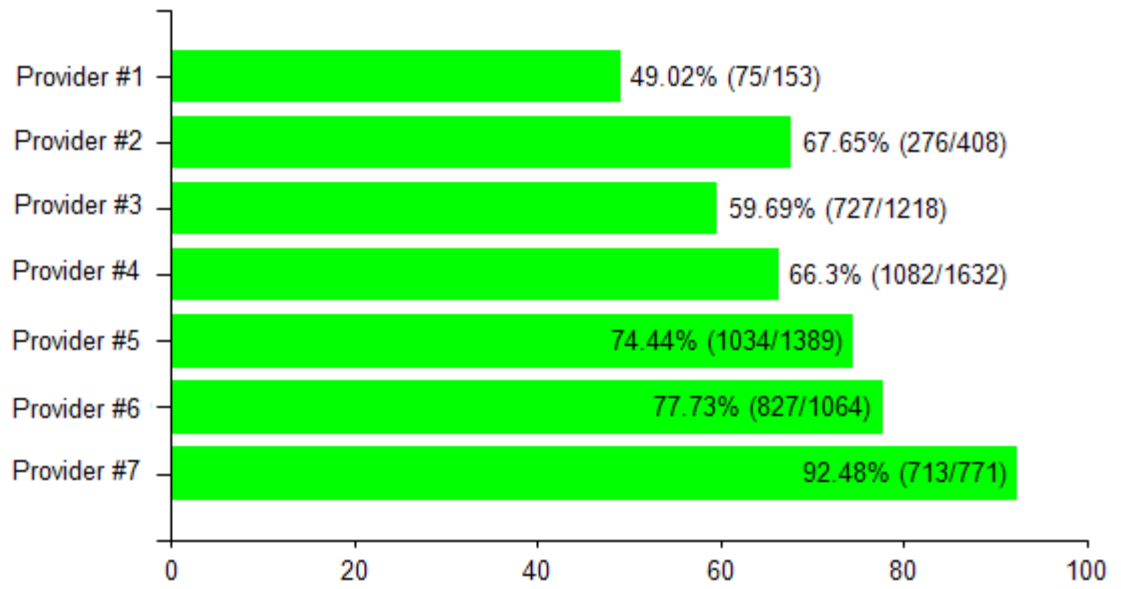


Quarter	Practice Average	National Average
2013Q1	64.27 (250/389)	75.39 (38290/50790)
2013Q2	65 (39/60)	84.57 (43910/51920)
2013Q3	76.61 (285/372)	90.19 (45120/50030)
2013Q4	76.34 (3326/4357)	92.65 (46540/50230)

Location Performance (2013Q4)



Provider Performance (2013Q4)

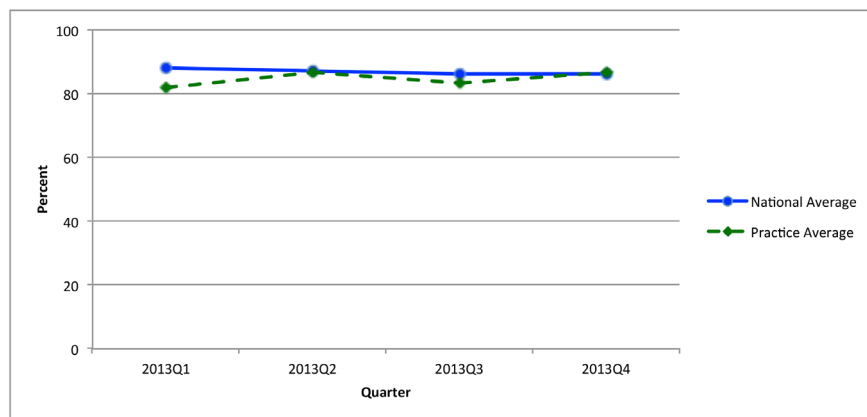


PINN-105 Antiplatelet Therapy

Percentage of patients aged >=18 years with a diagnosis of coronary artery disease seen within a 12-month period who were prescribed aspirin or clopidogrel (ACC/AHA/AMA-PCPI)

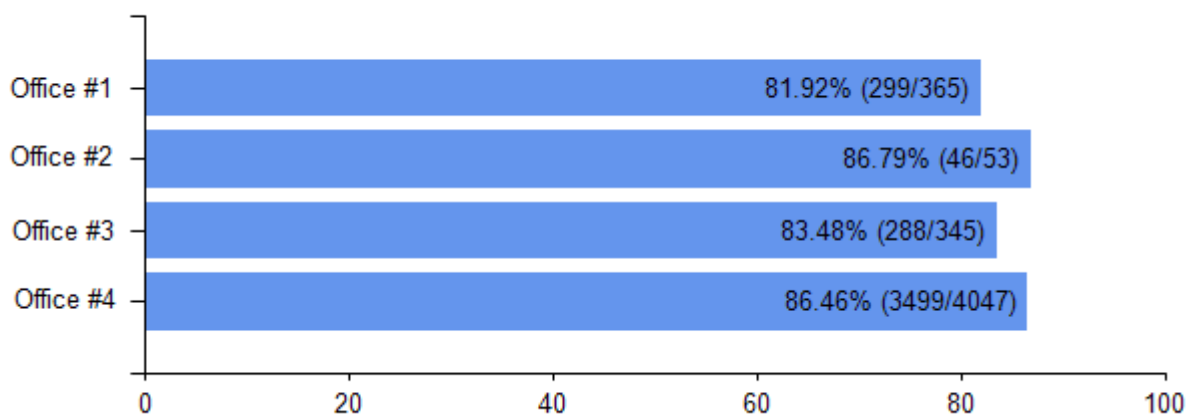
[View Measure Scorecard](#)

Practice Performance

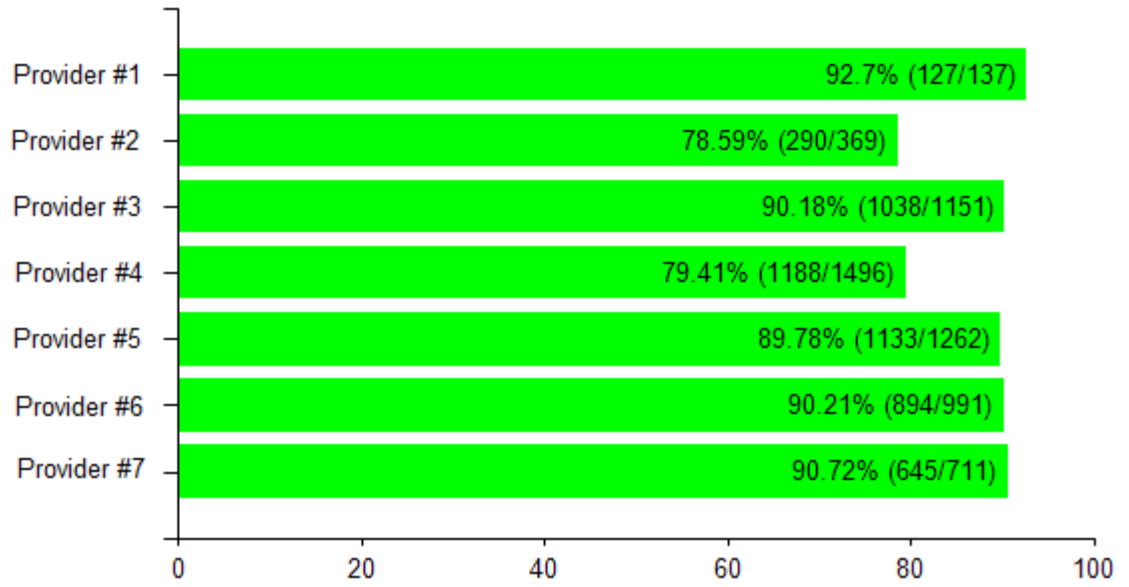


Quarter	Practice Average	National Average
2013Q1	81.92 (299/365)	88.02 (41000/46580)
2013Q2	86.79 (46/53)	87.04 (40440/46460)
2013Q3	83.48 (288/345)	86.25 (41580/48210)
2013Q4	86.46 (3499/4047)	85.99 (40640/47260)

Location Performance (2013Q4)



Provider Performance (2013Q4)

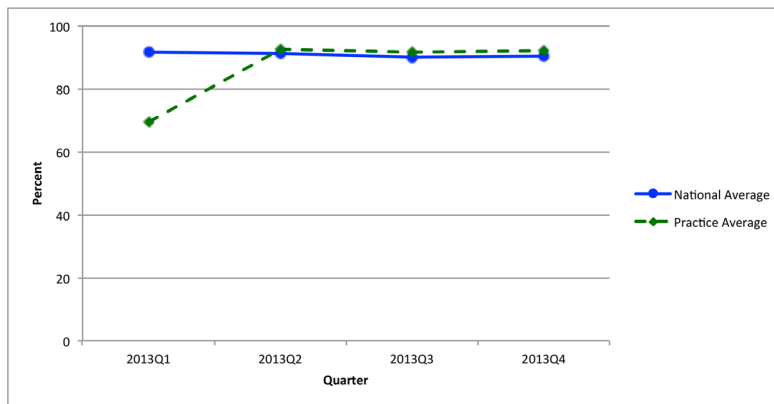


PINN-120 Blood Pressure Control

Percentage of patients aged ≥ 18 years with a diagnosis of hypertension seen within a 12-month period who have a blood pressure $< 140/90$ mm Hg, OR who have a blood pressure $\geq 140/90$ mm Hg and were prescribed ≥ 2 antihypertensive medications during the most recent office visit (ACC/AHA/AMA-PCPI)

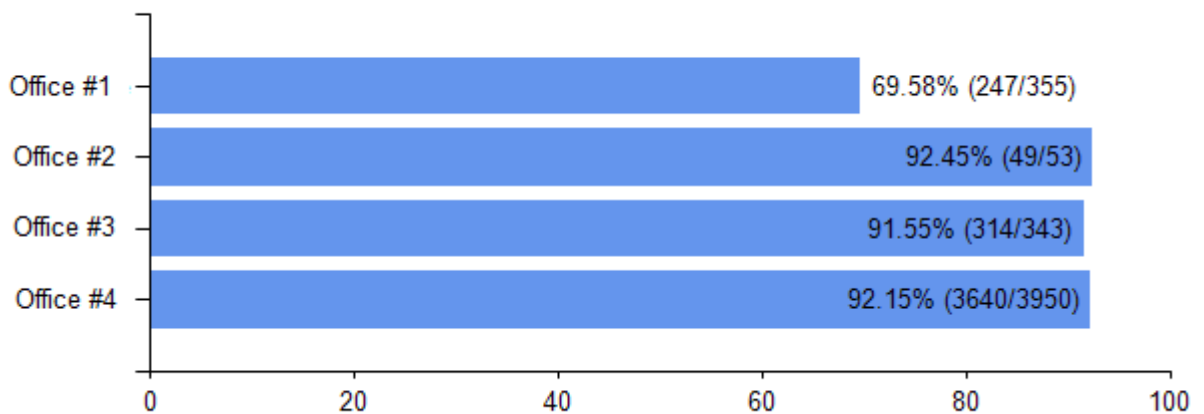
[View Measure Scorecard](#)

Practice Performance

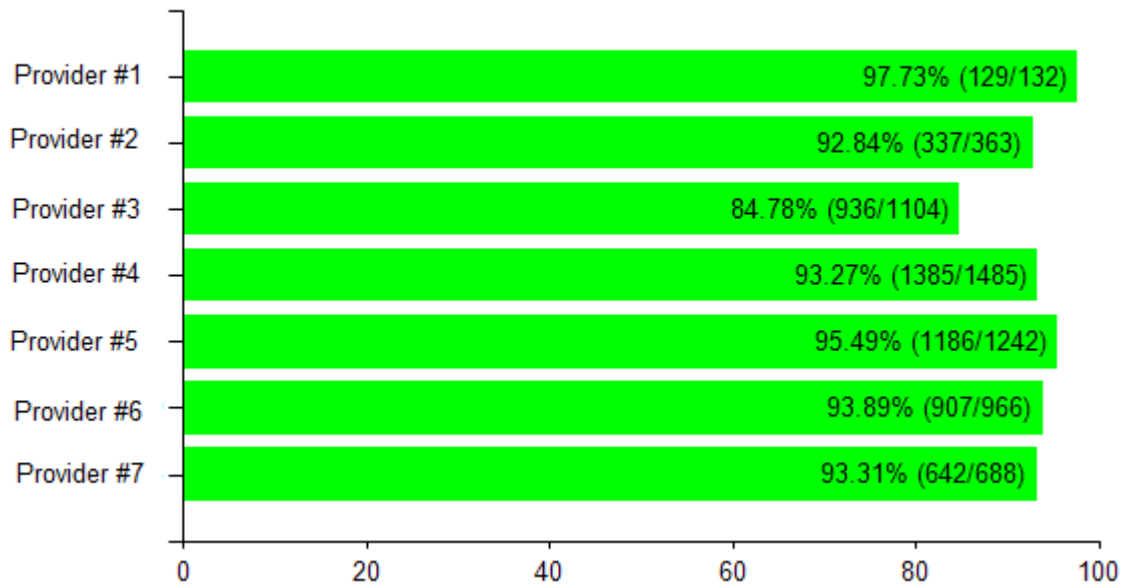


Quarter	Practice Average	National Average
2013Q1	69.58 (247/355)	91.93 (44330/48220)
2013Q2	92.45 (49/53)	91.18 (42810/46950)
2013Q3	91.55 (314/343)	90.1 (42700/47390)
2013Q4	92.15 (3640/3950)	90.24 (41690/46200)

Location Performance (2013Q4)



Provider Performance (2013Q4)

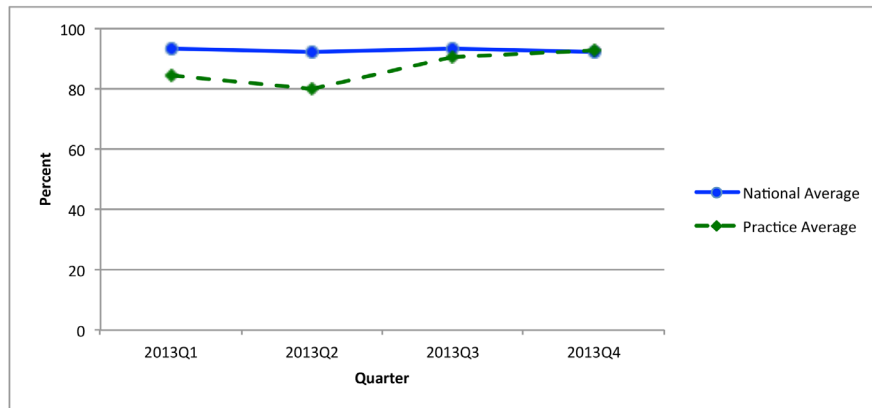


PINN-145 ACE Inhibitor or ARB Therapy: Diabetes or LVSD

Percentage of patients aged ≥ 18 years with a diagnosis of heart failure with a current or prior LVEF of $< 40\%$ who were prescribed ACE inhibitor or ARB therapy either within a 12-month period when seen in the outpatient setting or at hospital discharge (ACC/AHA/AMA-PCPI)

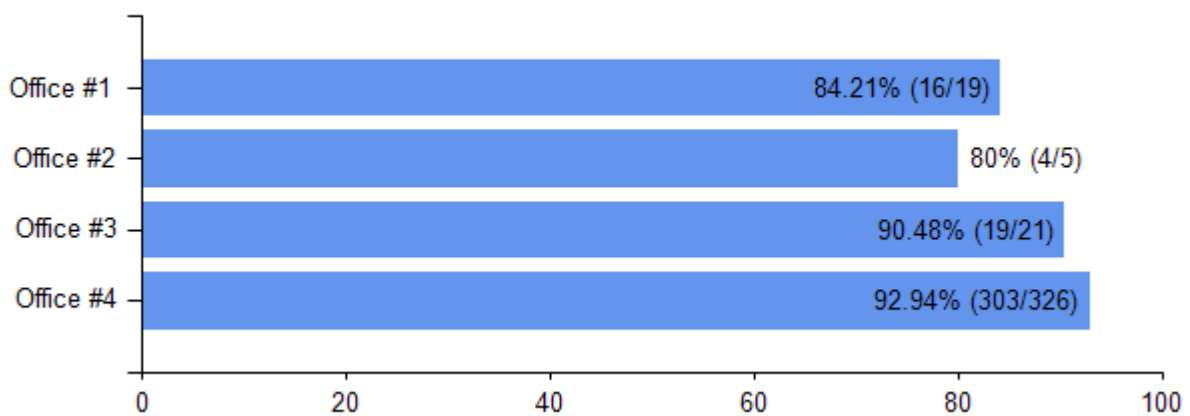
[View Measure Scorecard](#)

Practice Performance

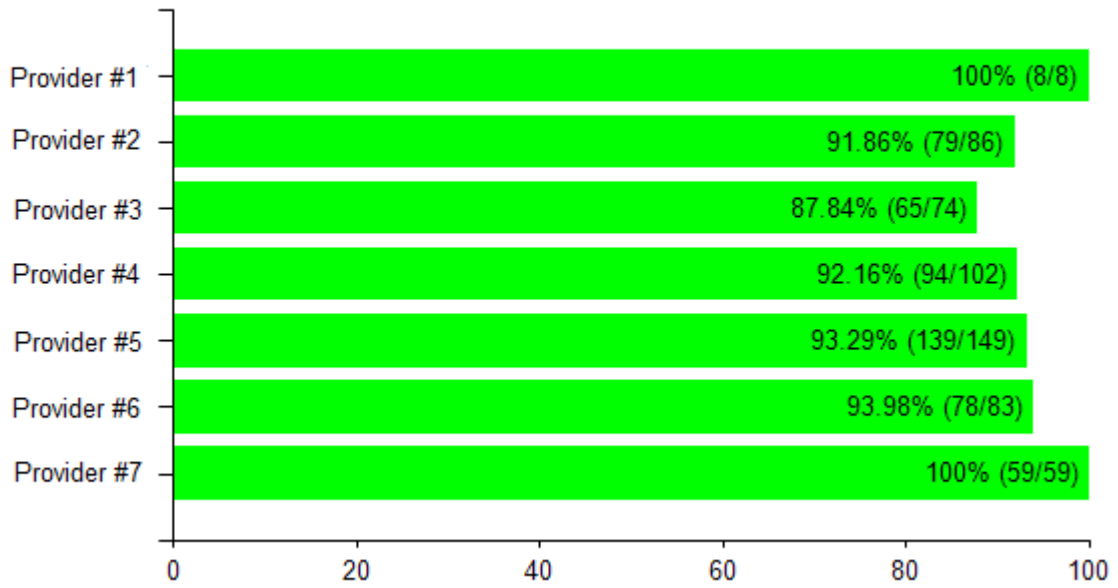


Quarter	Practice Average	National Average
2013Q1	84.21 (16/19)	93.52 (3610/3860)
2013Q2	80 (4/5)	92.29 (3470/3760)
2013Q3	90.48 (19/21)	93.6 (3510/3750)
2013Q4	92.94 (303/326)	92.46 (3310/3580)

Location Performance (2013Q4)



Provider Performance (2013Q4)

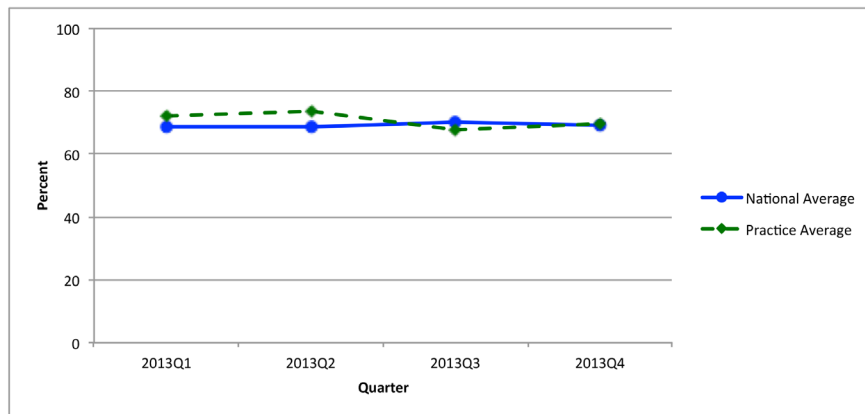


PINN-161 Chronic Anticoagulation Therapy

Percentage of patients aged ≥ 18 years with nonvalvular AF or atrial flutter at high risk for thromboembolism, according to CHADS2 risk stratification, who were prescribed of warfarin or another oral anticoagulant drug that is FDA approved for the prevention of thromboembolism (ACC/AHA/AMA-PCPI)

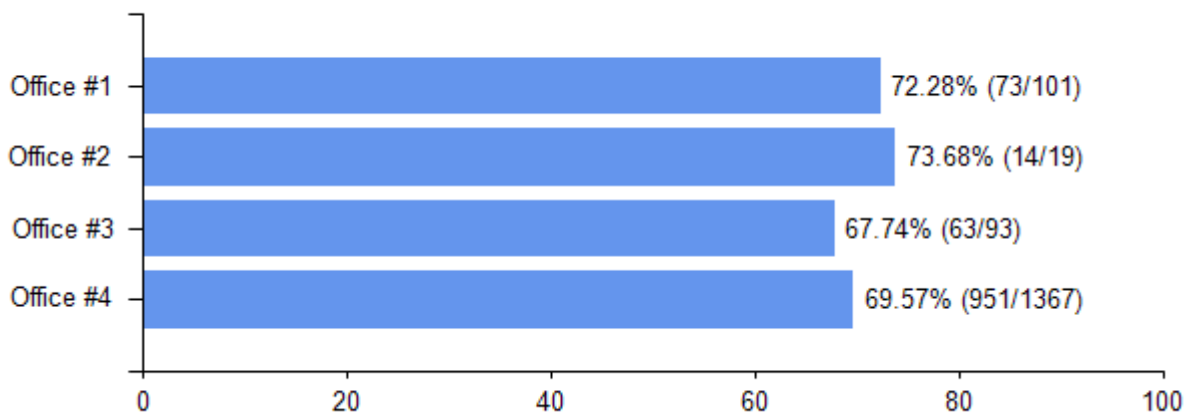
[View Measure Scorecard](#)

Practice Performance



Quarter	Practice Average	National Average
2013Q1	72.28 (73/101)	68.78 (10950/15920)
2013Q2	73.68 (14/19)	68.49 (10780/15740)
2013Q3	67.74 (63/93)	70.02 (11070/15810)
2013Q4	69.57 (951/1367)	69.35 (10700/15430)

Location Performance (2013Q4)



Provider Performance (2013Q4)

