



NCDR[®]
NATIONAL CARDIOVASCULAR DATA REGISTRY

IMPACT Registry^{*}
Version 1.0

Institutional Outcomes Report
2014Q4
National Outcomes Report
999997

Aggregation Date: Mar 2, 2015 11:59:59 PM

Publish Date: Mar 6, 2015

If User desires to publish or otherwise distribute or use, in whole or in part, any aggregate data or reports provided by ACCF, or produced in connection with or derived from NCDR, with the exception of strictly internal use within User's organization, User must first obtain the prior express written consent of ACCF. To the extent User is permitted to publish aggregate data, such aggregate data and any related information published in connection with it must be reviewed and approved by ACCF prior to publication.

National Cardiovascular Data Registry
IMPACT Registry[™]
800-257-4737

www.ncdr.com • ncdr@acc.org

©2012 American College of Cardiology Foundation

Executive Summary

IMPACT Registry™

National Outcomes Report (999997) compared to Rolling Four Quarters (R4Q) for US Hospitals ending 2014Q4

Section IA: Quality Metrics

Quality Metrics			Distribution of Hospital Performance				
			10th percentile	90th percentile			
			Better →				
1	Proportion of patients <1 month of age that have a diagnostic catheterization procedure with a major adverse event or death						
	<table border="1" style="width: 100%; border-collapse: collapse;"> <thead> <tr> <th style="width: 20%;">My Hospital</th> <th style="width: 40%;">US Hospitals 50th Pctl</th> <th style="width: 40%;">US Hospitals 90th Pctl</th> </tr> </thead> <tbody> <tr> <td></td> <td style="text-align: center;">16.1%</td> <td style="text-align: center;">0.0%</td> </tr> </tbody> </table>	My Hospital			US Hospitals 50th Pctl	US Hospitals 90th Pctl	
My Hospital	US Hospitals 50th Pctl	US Hospitals 90th Pctl					
	16.1%	0.0%					
<p>Proportion of patients <1 month of age undergoing a diagnostic catheterization procedure with a major adverse event or death. (May reflect other med/surg Rx during same admission.) [Detail Line:1001]</p>							
2	Proportion of patients >= 1 month to <= 1 year of age that have a diagnostic catheterization procedure with a major adverse event or death						
	<table border="1" style="width: 100%; border-collapse: collapse;"> <thead> <tr> <th style="width: 20%;">My Hospital</th> <th style="width: 40%;">US Hospitals 50th Pctl</th> <th style="width: 40%;">US Hospitals 90th Pctl</th> </tr> </thead> <tbody> <tr> <td></td> <td style="text-align: center;">4.8%</td> <td style="text-align: center;">0.0%</td> </tr> </tbody> </table>	My Hospital			US Hospitals 50th Pctl	US Hospitals 90th Pctl	
My Hospital	US Hospitals 50th Pctl	US Hospitals 90th Pctl					
	4.8%	0.0%					
<p>Proportion of patients >= 1 month to <= 1 year of age that have a diagnostic catheterization procedure with a major adverse event or death. (May reflect other med/surg Rx during same admission.) [Detail Line:1002]</p>							
3	Proportion of patients >1 year of age and <=18 that have a diagnostic catheterization procedure with a major adverse event or death						
	<table border="1" style="width: 100%; border-collapse: collapse;"> <thead> <tr> <th style="width: 20%;">My Hospital</th> <th style="width: 40%;">US Hospitals 50th Pctl</th> <th style="width: 40%;">US Hospitals 90th Pctl</th> </tr> </thead> <tbody> <tr> <td></td> <td style="text-align: center;">0.0%</td> <td style="text-align: center;">0.0%</td> </tr> </tbody> </table>	My Hospital			US Hospitals 50th Pctl	US Hospitals 90th Pctl	
My Hospital	US Hospitals 50th Pctl	US Hospitals 90th Pctl					
	0.0%	0.0%					
<p>Proportion of patients > 1 year of age and <=18 years of age undergoing a diagnostic catheterization procedure with a major adverse event or death. (May reflect other med/surg Rx during same admission.) [Detail Line:1003]</p>							
4	Proportion of patients >18 years of age that have a diagnostic catheterization procedure with a major adverse event or death						
	<table border="1" style="width: 100%; border-collapse: collapse;"> <thead> <tr> <th style="width: 20%;">My Hospital</th> <th style="width: 40%;">US Hospitals 50th Pctl</th> <th style="width: 40%;">US Hospitals 90th Pctl</th> </tr> </thead> <tbody> <tr> <td></td> <td style="text-align: center;">0.0%</td> <td style="text-align: center;">0.0%</td> </tr> </tbody> </table>	My Hospital			US Hospitals 50th Pctl	US Hospitals 90th Pctl	
My Hospital	US Hospitals 50th Pctl	US Hospitals 90th Pctl					
	0.0%	0.0%					
<p>Proportion of patients > 18 years of age undergoing a diagnostic catheterization procedure with a major adverse event or death. (May reflect other med/surg Rx during same admission.) [Detail Line:1004]</p>							
5	Proportion of treated ASD closure defects leaving the cath lab with a none to trivial shunt						
	<table border="1" style="width: 100%; border-collapse: collapse;"> <thead> <tr> <th style="width: 20%;">My Hospital</th> <th style="width: 40%;">US Hospitals 50th Pctl</th> <th style="width: 40%;">US Hospitals 90th Pctl</th> </tr> </thead> <tbody> <tr> <td></td> <td style="text-align: center;">100.0%</td> <td style="text-align: center;">100.0%</td> </tr> </tbody> </table>	My Hospital			US Hospitals 50th Pctl	US Hospitals 90th Pctl	
My Hospital	US Hospitals 50th Pctl	US Hospitals 90th Pctl					
	100.0%	100.0%					
<p>Proportion of treated ASD closure defects leaving the cath lab with a none to trivial shunt. [Detail Line:1005]</p>							
6	Proportion of patients that have a treated isolated ASD closure that have a device embolization (requiring device retrieval)						
	<table border="1" style="width: 100%; border-collapse: collapse;"> <thead> <tr> <th style="width: 20%;">My Hospital</th> <th style="width: 40%;">US Hospitals 50th Pctl</th> <th style="width: 40%;">US Hospitals 90th Pctl</th> </tr> </thead> <tbody> <tr> <td></td> <td style="text-align: center;">0.0%</td> <td style="text-align: center;">0.0%</td> </tr> </tbody> </table>	My Hospital			US Hospitals 50th Pctl	US Hospitals 90th Pctl	
My Hospital	US Hospitals 50th Pctl	US Hospitals 90th Pctl					
	0.0%	0.0%					
<p>Proportion of patients undergoing an isolated atrial septal defect closure procedure that have an intra or post procedure device embolization. [Detail Line:1006]</p>							
7	Proportion of patients that have an isolated PDA closure procedure leaving the cath lab with a none to trivial shunt						
	<table border="1" style="width: 100%; border-collapse: collapse;"> <thead> <tr> <th style="width: 20%;">My Hospital</th> <th style="width: 40%;">US Hospitals 50th Pctl</th> <th style="width: 40%;">US Hospitals 90th Pctl</th> </tr> </thead> <tbody> <tr> <td></td> <td style="text-align: center;">100.0%</td> <td style="text-align: center;">100.0%</td> </tr> </tbody> </table>	My Hospital			US Hospitals 50th Pctl	US Hospitals 90th Pctl	
My Hospital	US Hospitals 50th Pctl	US Hospitals 90th Pctl					
	100.0%	100.0%					
<p>Proportion of patient undergoing an isolated PDA closure procedure leaving the cath lab with a none to trivial shunt. [Detail Line:1007]</p>							
8	Proportion of patients that have a treated isolated PDA closure procedure that have a device embolization (requiring device retrieval)						
	<table border="1" style="width: 100%; border-collapse: collapse;"> <thead> <tr> <th style="width: 20%;">My Hospital</th> <th style="width: 40%;">US Hospitals 50th Pctl</th> <th style="width: 40%;">US Hospitals 90th Pctl</th> </tr> </thead> <tbody> <tr> <td></td> <td style="text-align: center;">0.0%</td> <td style="text-align: center;">0.0%</td> </tr> </tbody> </table>	My Hospital			US Hospitals 50th Pctl	US Hospitals 90th Pctl	
My Hospital	US Hospitals 50th Pctl	US Hospitals 90th Pctl					
	0.0%	0.0%					
<p>Proportion of patients undergoing an isolated PDA closure procedure that have an intra or post procedure device embolization. [Detail Line:1008]</p>							

Executive Summary

IMPACT Registry™

National Outcomes Report (999997) compared to Rolling Four Quarters (R4Q) for US Hospitals ending 2014Q4

Section IA: Quality Metrics

9	<p>Proportion of patients that had a coarctation repair by balloon angioplasty that have a post procedure coarctation peak systolic gradient of <10 mmHg</p> <table border="1"> <thead> <tr> <th>My Hospital</th> <th>US Hospitals 50th Pctl</th> <th>US Hospitals 90th Pctl</th> </tr> </thead> <tbody> <tr> <td></td> <td>60.5%</td> <td>100.0%</td> </tr> </tbody> </table> <p>Proportion of patients undergoing an isolated coarctation procedure by balloon angioplasty reaching a post procedure coarctation peak systolic gradient of <10 mmHg. [Detail Line:1009]</p>	My Hospital	US Hospitals 50th Pctl	US Hospitals 90th Pctl		60.5%	100.0%	
My Hospital	US Hospitals 50th Pctl	US Hospitals 90th Pctl						
	60.5%	100.0%						
10	<p>Proportion of patients that had a coarctation repair with a stent that have a post procedure coarctation peak systolic gradient of <10 mmHg</p> <table border="1"> <thead> <tr> <th>My Hospital</th> <th>US Hospitals 50th Pctl</th> <th>US Hospitals 90th Pctl</th> </tr> </thead> <tbody> <tr> <td></td> <td>100.0%</td> <td>100.0%</td> </tr> </tbody> </table> <p>Proportion of patients undergoing an isolated coarctation procedure with a stent reaching a post procedure coarctation peak systolic gradient of <10 mmHg. [Detail Line:1010]</p>	My Hospital	US Hospitals 50th Pctl	US Hospitals 90th Pctl		100.0%	100.0%	
My Hospital	US Hospitals 50th Pctl	US Hospitals 90th Pctl						
	100.0%	100.0%						
11	<p>Proportion of patients that have an aortic valvuloplasty that have a post procedure aortic valve insufficiency increase of two or more grades</p> <table border="1"> <thead> <tr> <th>My Hospital</th> <th>US Hospitals 50th Pctl</th> <th>US Hospitals 90th Pctl</th> </tr> </thead> <tbody> <tr> <td></td> <td>0.0%</td> <td>0.0%</td> </tr> </tbody> </table> <p>Proportion of patients undergoing an isolated aortic valvuloplasty that have a post procedure aortic valve insufficiency increase of two or more grades. [Detail Line:1011]</p>	My Hospital	US Hospitals 50th Pctl	US Hospitals 90th Pctl		0.0%	0.0%	
My Hospital	US Hospitals 50th Pctl	US Hospitals 90th Pctl						
	0.0%	0.0%						
12	<p>Proportion of patients that have pulmonary valvuloplasty that have a post procedure systolic gradient of < 30 mm Hg</p> <table border="1"> <thead> <tr> <th>My Hospital</th> <th>US Hospitals 50th Pctl</th> <th>US Hospitals 90th Pctl</th> </tr> </thead> <tbody> <tr> <td></td> <td>87.1%</td> <td>100.0%</td> </tr> </tbody> </table> <p>Proportion of patients undergoing an isolated pulmonary valvuloplasty reaching a post procedure peak systolic gradient of <30 mm Hg [Detail Line: 1012]</p>	My Hospital	US Hospitals 50th Pctl	US Hospitals 90th Pctl		87.1%	100.0%	
My Hospital	US Hospitals 50th Pctl	US Hospitals 90th Pctl						
	87.1%	100.0%						

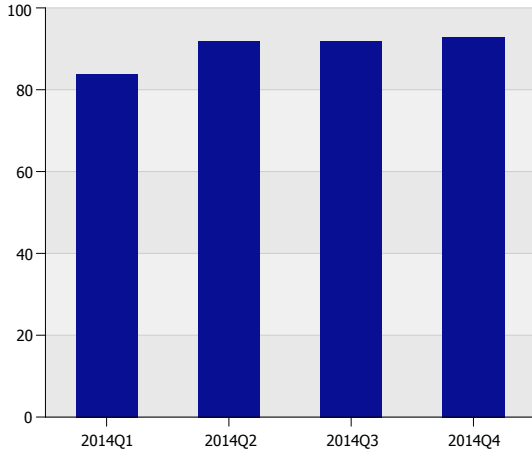
Executive Summary

IMPACT Registry™

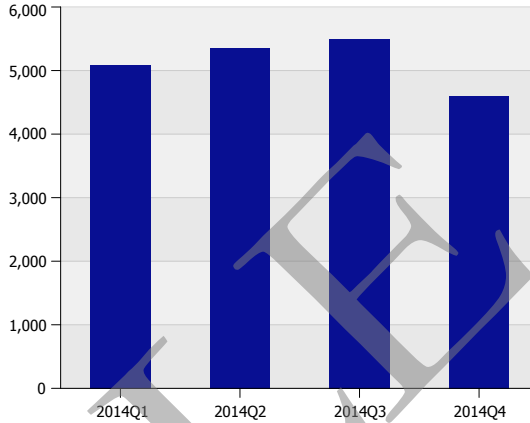
National Outcomes Report (999997) compared to Rolling Four Quarters (R4Q) for US Hospitals ending 2014Q4

Section IB: Participant Graphs

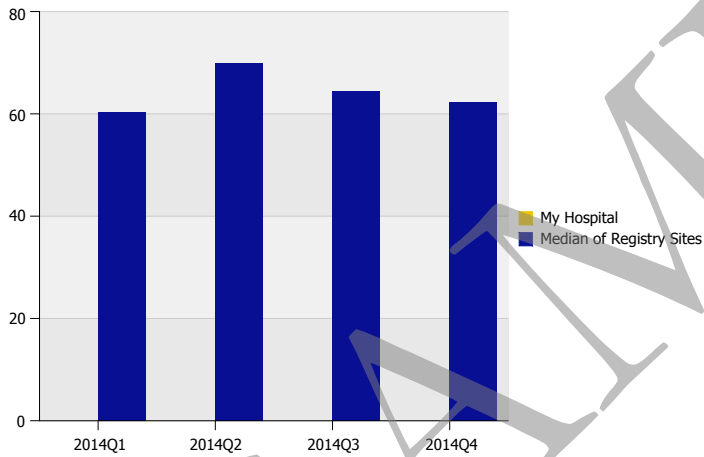
Number of Sites in the IMPACT Registry



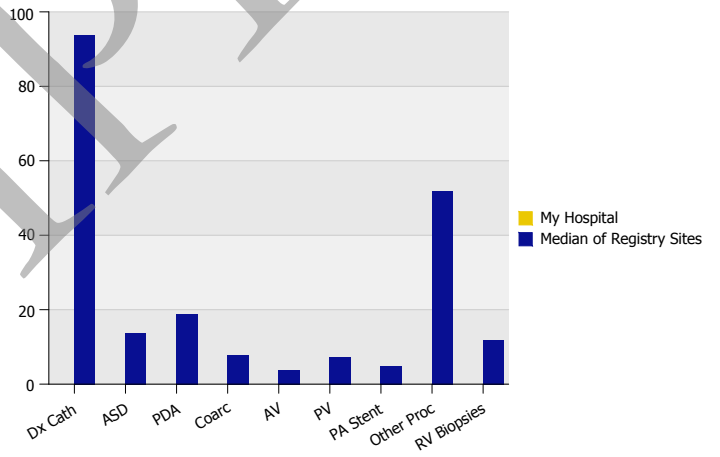
Numbers of Episodes of Care in the IMPACT Registry Graph



Quarterly Case Volume of Cath Lab Visits Graph



Number of Cases by Procedure Type (R4Q)

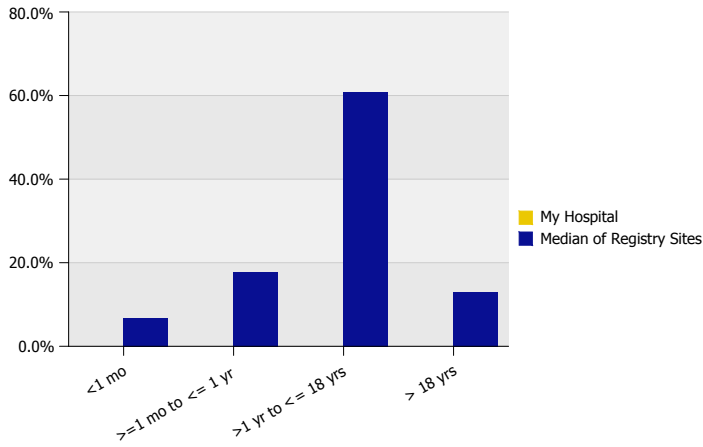


Executive Summary

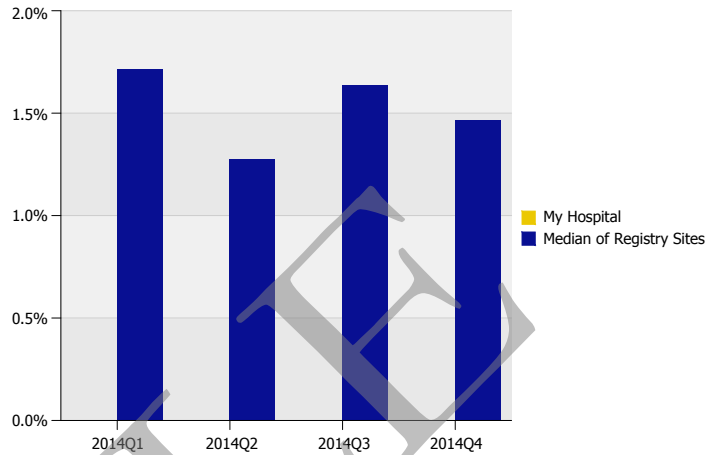
IMPACT Registry™

National Outcomes Report (999997) compared to Rolling Four Quarters (R4Q) for US Hospitals ending 2014Q4

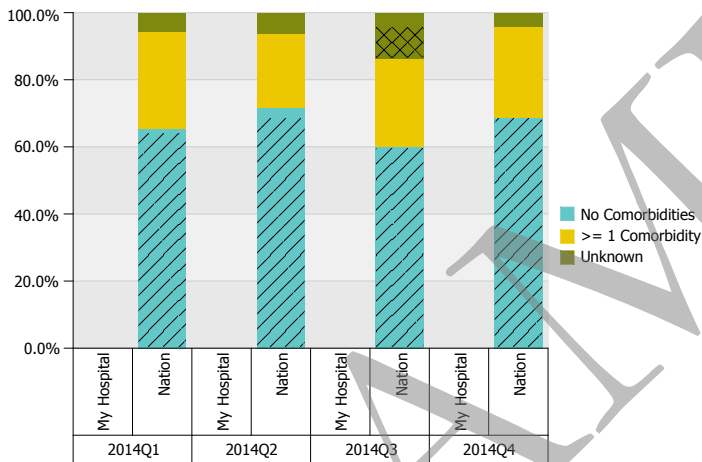
Age Distribution Graph



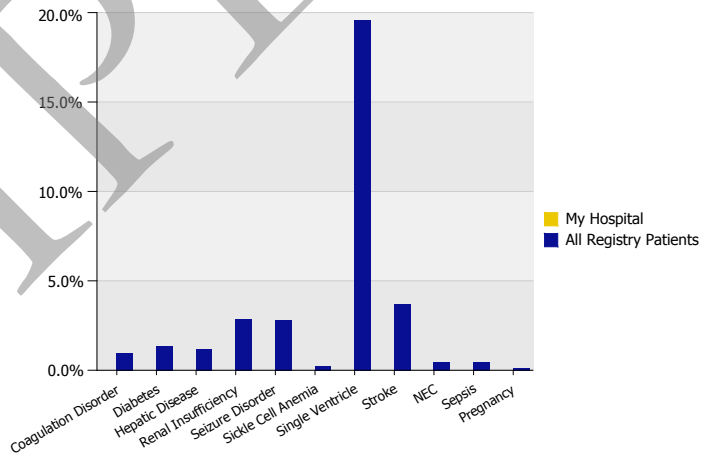
Episodes of Care Resulting in Patient Death Graph



Episodes of Care by Presence of Comorbidity Graph



Episodes of Care by Comorbidity Type

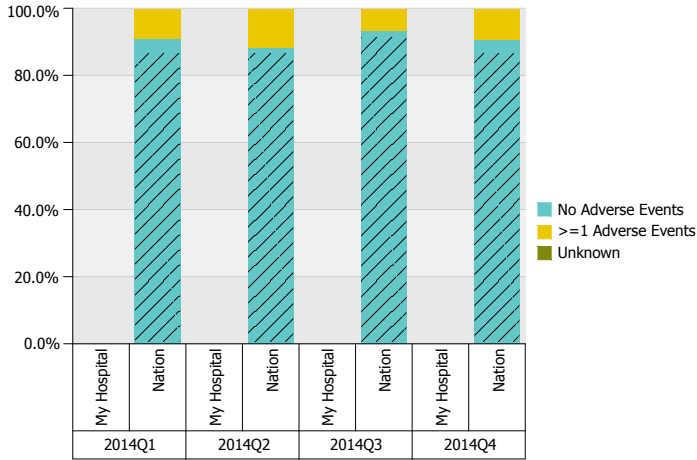


Executive Summary

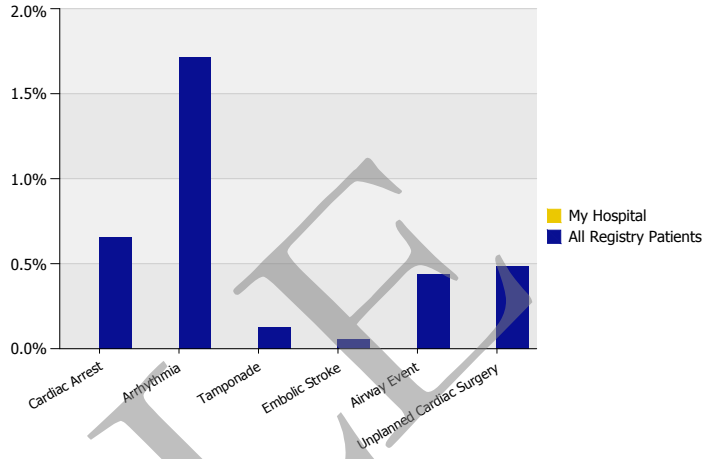
IMPACT Registry™

National Outcomes Report (999997) compared to Rolling Four Quarters (R4Q) for US Hospitals ending 2014Q4

Episodes by Presence of Adverse Event



Cath Lab Visits by Adverse Event Type (R4Q)



SAMPLE