

U.S. News & WORLD REPORT



AMERICAN
COLLEGE of
CARDIOLOGY
Advancing Heart Care Worldwide

2022
EDITION

Best Hospitals

Exclusive Rankings

**COVID-19's Toll:
Coping With the
Aftermath**

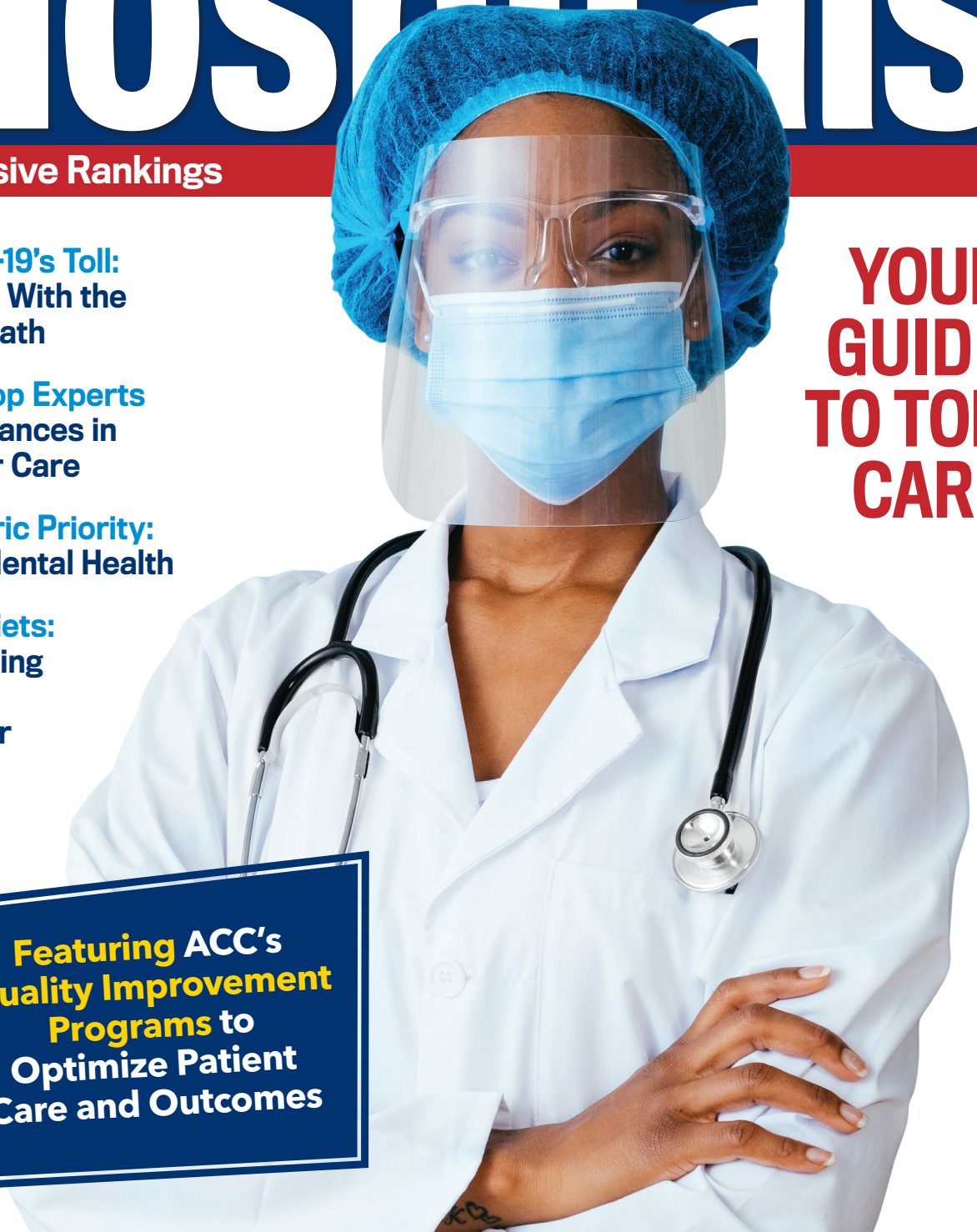
**Four Top Experts
on Advances in
Cancer Care**

**Pediatric Priority:
Kids' Mental Health**

**Best Diets:
A Ranking
of 39
Popular
Plans**

**YOUR
GUIDE
TO TOP
CARE**

**Featuring ACC's
Quality Improvement
Programs to
Optimize Patient
Care and Outcomes**





Quality Improvement
for Institutions

American College of Cardiology

The ACC Quality Improvement for Institutions program provides **ASSESSMENT, MONITORING, AND EVALUATION TOOLS** that transform clinical data into practical solutions that can make a difference in peoples' lives.



NATIONAL CARDIOVASCULAR DATA REGISTRY (NCDR)

The ACC's suite of CV data registries help hospitals and private practices measure and improve the quality of care they provide.

QUALITY CAMPAIGNS

Designed to support efforts with structured quality improvement projects to achieve specific goals, disseminate evidence-based strategies and toolkits, promote best practice sharing, and build nationwide learning networks using the NCDR registries.



ACC ACCREDITATION SERVICES

Combining registry data, education, and quality initiatives, ACC's accreditations for CV service lines help hospitals reduce variations in care, bridge gaps, and track progress for improved outcomes and enhanced ROI.

QUALITY IMPROVEMENT FOR INSTITUTIONS



CLINICAL TOOLKITS

Guidelines-based tools and apps, and best practice care resources to address common clinical issues at your facility.

To access these resources and more, visit **CVQuality.ACC.org today!**

Do You Or a Loved One Need Cardiac Care?



- Heart Attack (Stent, Surgery,) and Chest Pain
- Heart Rhythm Disorder (AFib Ablation, Implantable Cardioverter-Defibrillator, Pacemaker)
- Heart Valve Disease (TAVR, Surgery)

For these and other treatments, use the online tool to...



SEARCH over 700 hospitals



COMPARE their performance

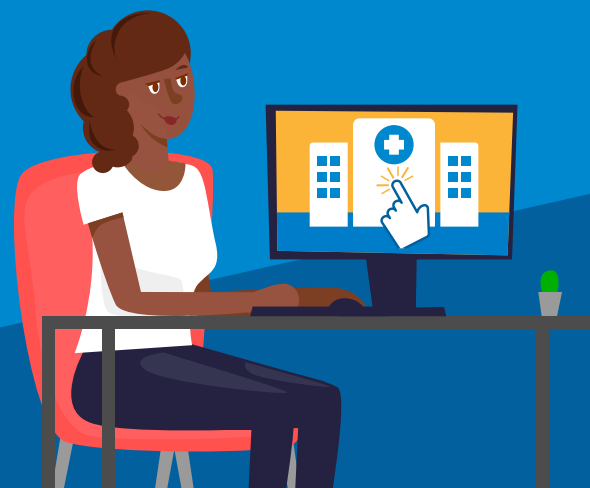


SELECT the right hospital



DON'T DELAY YOUR CARE!

Remember that hospitals have safety measures to protect patients from virus infection.



Powered by ACC's NCDR® and CardioSmart®



AMERICAN COLLEGE of CARDIOLOGY

Advancing Heart Care Worldwide

©2021 American College of Cardiology B21092

Get Started at **FindYourHeartaHome.org**

THE HEART OF QUALITY PATIENT CARE

As the global professional organization for the entire cardiovascular care team, the American College of Cardiology (ACC) is committed to supporting patients, caregivers, and health care professionals by ensuring the highest quality care is delivered to every patient, every time.

ACC Accreditation Services™

ACC Accreditation Services links performance improvement to patient outcomes and promotes consistent processes across the care continuum. Working with hospitals and health systems, ACC Accreditation Services partners to build communities of excellence by advancing the highest standards of quality patient care.

NCDR® (National Cardiovascular Data Registry)

The NCDR is ACC's suite of data registries helping hospitals and health systems measure and improve the quality of cardiovascular care they provide. The NCDR utilizes real-world evidence to improve patient outcomes and achieve quality heart care.

MedAxiom, an ACC Company

MedAxiom is the premier source for cardiovascular organizational performance solutions. MedAxiom unites the cardiovascular community via cutting-edge education, networking opportunities and best practices to transform cardiovascular care, together.

FOR CARDIOVASCULAR PROFESSIONALS, please visit CVQuality.ACC.org to learn more about ACC's Quality Improvement for Institutions program. To learn more about cardiovascular organizational performance solutions, visit MedAxiom.com.

FOR PATIENTS AND CAREGIVERS, please visit CardioSmart.org to learn more about ACC's clinician-directed heart health education and resources.

The following pages list more than 2,000 hospitals, centers and health systems that rely on ACC's NCDR and Accreditation Services. Patients and caregivers can trust hospitals and centers that participate in the NCDR, receive the ACC's Accreditation seal of approval, and are recognized with the Chest Pain - MI Registry™ Performance Achievement Award and the HeartCARE Center™ Award for delivering the best cardiovascular patient care.

ACC Accreditation Services

AF Atrial Fibrillation Accreditation

Incorporates evidence-based guidelines and clinical best practices to treat patients with atrial fibrillation.

CL Cardiac Cath Lab Accreditation

Merges the latest evidence-based science and process improvement methodologies, while addressing pre-procedure, peri-procedure and post-procedure care for patients undergoing treatment in the Cath Lab.

CP Chest Pain Center Accreditation

Integrates triage treatment protocols, risk stratification, and best practices for the emergency care of acute coronary syndrome patients.

EP Electrophysiology Accreditation

Links the latest science, process improvement methodologies and patient outcomes across the care continuum for patients undergoing treatment in the EP Lab.

HF Heart Failure Accreditation

Leverages guideline-directed medical therapies and best practices to ensure greater operational efficiency and a more consistent approach to treatment.

TV Transcatheter Valve Certification

Utilizes evidence-based science, real-world patient outcomes and expert recommendations to standardize and improve care for patients requiring transcatheter valve therapies.

NCDR

A AFib Ablation Registry™

(Catheter-based atrial fibrillation ablation procedures) Assesses the prevalence, demographics, acute management and outcomes of patients undergoing atrial fibrillation (AFib) catheter ablation procedures.

C CathPCI Registry®

(Diagnostic cardiac catheterization and percutaneous coronary intervention) Measures adherence to the ACC/AHA clinical practice guideline recommendations, procedure performance standards and appropriate use criteria for coronary revascularization.

CP Chest Pain - MI Registry™

(Acute myocardial infarction treatment) Leverages national evidence-based standards for understanding and improving the quality, safety and outcomes of care provided for heart attack patients.

E EP Device Implant Registry™

(Implantable cardioverter defibrillator and pacemaker procedures) Provides a national standard for understanding patient characteristics, treatments, outcomes, device safety and the overall quality of care for ICD/CRT-D and select novel pacemaker procedures.

IM IMPACT Registry®

(Pediatric and adult congenital treatment procedures) Assesses the prevalence, demographics, management and outcomes of pediatric and adult congenital heart disease patients who undergo diagnostic catheterizations and catheter-based interventions.

L LAAO Registry™

(Left atrial appendage occlusion procedures) Captures data on left atrial appendage occlusion (LAAO) procedures to assess real-world procedural outcomes, short and long-term safety, and comparative effectiveness.

T STS/ACC TVT Registry™

(Transcatheter valve therapy procedures) Monitors real-world outcomes on transcatheter valve therapies leading to improved patient outcomes, enhanced assessment of treatment options and results, and more informed decision making.

Honors

Chest Pain - MI Registry™ Performance Achievement Award

Recognizes hospitals participating in Chest Pain - MI Registry that have demonstrated sustained, top level performance in quality of care and adherence to guideline recommendations.

▲ Platinum

▲ Gold

▲ Silver

◆ HeartCARE Center™

Recognizes hospitals that have demonstrated a commitment to world-class cardiovascular care through comprehensive process improvement, disease and procedure-specific accreditation, professional excellence and community engagement.



ALABAMA

Grandview Medical Center.....	C CP E L T CL CP
University of Alabama Hospital.....	A C CP E L T ▲
Huntsville Hospital.....	C CP E L T
Shelby Baptist Medical Center.....	C L T CL TV
Flowers Hospital.....	C CP CP HF
Riverview Regional Medical Center.....	C E CL CP
Thomas Hospital.....	A C CP E
Andalusia Health.....	E CP HF
Brookwood Medical Center.....	C L T
Crestwood Medical Center.....	C CP CP
Health Care Authority for Baptist Health.....	C E L
Mobile Infirmiry Medical Center.....	C L T
North Alabama Medical Center.....	C E CP
Princeton Baptist Medical Center.....	C L T
Providence Hospital.....	C L T
Southeast Health.....	L T CP
Springhill Medical Center.....	C L T
St. Vincent's East.....	C L T
St. Vincent's Hospital.....	C L T
DCH Regional Medical Center.....	C E
DeKalb Regional Medical Center.....	C CP
East Alabama Medical Center.....	C T
Gadsden Regional Medical Center.....	C CP
Jackson Hospital and Clinic.....	C L
Northeast Alabama Regional Medical Center.....	C E
South Baldwin Regional Medical Center.....	C CP
Vaughan Regional Medical Center.....	C CP
Baptist Medical Center South.....	CL
Cullman Regional Medical Center.....	C
Marshall Medical Center.....	E
Russell Medical Center.....	C
Shoals Hospital.....	CP
The Children's Hospital of Alabama.....	IM
University of South Alabama Cardiology Department.....	C
Walker Baptist Medical Center.....	C

ALASKA

Alaska Regional Hospital.....	C L T AF CP HF
Providence Alaska Medical Center.....	A C CP T ▲
Fairbanks Memorial Hospital.....	C E
Mat-Su Regional Medical Center.....	C CP
Alaska Cardiovascular Surgery Center, LLC.....	E
Alaska Native Medical Center.....	C
Central Peninsula Hospital.....	C

ARIZONA

Abrazo Arizona Heart Hospital.....	C CP L T AF CL CP HF ▲
------------------------------------	------------------------

Registries	Accreditations	Awards
A AFib Ablation Registry™	AF Atrial Fibrillation	▲ Chest Pain - MI Registry™ Award Platinum
C CathPCI Registry™	CL Cardiac Cath Lab	▲ Chest Pain - MI Registry™ Award Gold
CP Chest Pain - MI Registry™	CP Chest Pain Center	▲ Chest Pain - MI Registry™ Award Silver
EP EP Device Implant Registry™	EP Electrophysiology	◆ HeartCARE Center
IM IMPACT Registry™	HF Heart Failure	
L LAAO Registry™	TV Transcatheter Valve	
T STS/ACC TVT Registry™		

Chandler Regional Medical Center.....	A C CP E L T CP
St. Joseph's Hospital and Medical Center.....	A C CP L T CP
Abrazo Arrowhead Campus.....	C CP L T CP
Mercy Gilbert Medical Center.....	A C CP E CP
Tucson Medical Center.....	C CP L T CP
Carondelet St. Mary's Hospital.....	C L T CP
Havasu Regional Medical Center.....	C E CL CP
Northwest Medical Center.....	C L T CP
Abrazo Central Campus.....	C CP CP
Abrazo West Campus.....	C CP CP
HonorHealth.....	C L T
Mayo Clinic Arizona.....	C L T
Mountain Vista Medical Center.....	C CP CP
Valley View Medical Center.....	C E CP
Western Arizona Regional Medical Center.....	C CP CP
Yavapai Regional Medical Center.....	C L T
Yuma Regional Medical Center.....	C E T
Abrazo Scottsdale Campus.....	C CP
Banner - University Medical Center Tucson.....	L T
Banner Boswell Medical Center.....	L T
Banner Desert Medical Center.....	L T
Banner Heart Hospital.....	L T
Banner Thunderbird Medical Center.....	L T
Banner University Medical Center - Phoenix.....	L T
Canyon Vista Medical Center.....	C E
Carondelet St. Joseph's Hospital.....	C CP
Flagstaff Medical Center.....	C L
HonorHealth - Deer Valley Medical Center.....	C T
Kingman Regional Medical Center.....	C E
Oro Valley Hospital.....	C CP
Summit Healthcare Regional Medical Center.....	C E
HonorHealth John C. Lincoln Medical Center.....	L
Phoenix Children's Hospital.....	IM
Tempe St. Luke's Hospital.....	C
Verde Valley Medical Center.....	C

ARKANSAS

CHI St. Vincent Infirmiry.....	A C CP L T CP ▲
Mercy Hospital Northwest Arkansas.....	C CP L T CP ▲
Arkansas Heart Hospital.....	C CP E L T
Baptist Health - Fort Smith.....	C CP CP ▲
Baptist Health Medical Center - Little Rock.....	C CP L T
Northwest Medical Center - Bentonville.....	C CP L CP
Saline Memorial Hospital.....	C CP E CP
St. Bernards Medical Center.....	CP L T ▲
St. Mary's Regional Medical Center.....	C CP E CP
Washington Regional Medical Center.....	C CP L T
Baxter Regional Medical Center.....	C CP E
CHI St. Vincent Hospital Hot Springs.....	C CP ▲
Mercy Hospital Fort Smith.....	C CP CP
National Park Medical Center.....	C CP E
NEA Baptist Memorial Hospital.....	C CP ▲
Northwest Medical Center - Springdale.....	C CP CP
Unity Health White County Medical Center.....	C CP E

Baptist Health Medical Center - North Little Rock.....	C CP
Baptist Memorial Hospital - Jonesboro.....	CL CP
CHI St Vincent North.....	C CP
Conway Regional Medical Center.....	C CP
Jefferson Regional Medical Center.....	CP E
Medical Center of South Arkansas.....	C CP
Arkansas Children's Hospital.....	IM
Baptist Health Medical Center - Conway.....	CP
Siloam Springs Regional Hospital.....	CP
University of Arkansas Medical Sciences.....	CP
White River Medical Center.....	CP

CALIFORNIA

Bakersfield Heart Hospital.....	C CP L T CP HF ▲
California Pacific Medical Center.....	A C CP E L T ▲
El Camino Health.....	A C CP L T TV ▲
French Hospital Medical Center.....	A C CP L T TV ▲
UCLA Health for Ronald Reagan UCLA Medical Center.....	C CP E IM L T EP
Adventist Health Bakersfield.....	C CP E CP HF ▲
Adventist Health White Memorial.....	C E L T AF CP
Antelope Valley Hospital.....	C CP L T CP ▲
Dignity Health St. Joseph's Medical Center.....	C CP E L T ▲
Doctors Medical Center of Modesto.....	C CP L T CP ▲
Loma Linda University Medical Center.....	C E IM L T CP
NorthBay Medical Center.....	C CP E T CP ▲
Palomar Center.....	C CP E T TV ▲
Pomona Valley Hospital Medical Center.....	C CP L T CP ▲
Temecula Valley Hospital.....	C CP E T CP ▲
University Of California Davis Medical Center.....	C CP E IM L T
Adventist Health and Rideout Hospital.....	C CP E T ▲
Adventist Health Glendale.....	C E L T CP
Alta Bates Summit Medical Center.....	A C E L T
Cedars - Sinai Health Systems.....	C E IM L T
Eisenhower Medical Center.....	C E L T CP
Hoag Memorial Hospital Presbyterian.....	A C E L T
Loma Linda University Medical Center - Murrieta.....	C E L T CP
Marian Regional Medical Center.....	A C E L EP
Memorial Medical Center Modesto.....	C CP E T ▲
MemorialCare Long Beach Medical Center.....	C E IM L T
Mercy General Hospital - Sacramento.....	A C E L T
Mills - Peninsula Health Services.....	A C E L T
Riverside Community Hospital.....	C CP L T CP
Salinas Valley Memorial Healthcare System.....	CP E L T ▲
St. Bernardine Medical Center.....	A C L T CP
Sutter Medical Center - Sacramento.....	C E IM L T
Sutter Santa Rosa Regional Hospital.....	A C E L T
UC Irvine Health.....	C CP E L T

University of California San Francisco Medical Center.....	C E IM L T
Adventist Health St. Helena.....	C E L T
Community Memorial Hospital.....	C E L T
Desert Regional Medical Center.....	C CP L CP
Desert Valley Hospital.....	C CP E CP
Fresno Heart and Surgical Hospital.....	C E L T
Keck Medical Center of USC.....	C E L T
Los Robles Hospital & Medical Center.....	A C L T
MemorialCare Saddleback Medical Center.....	C E L T
Saint Agnes Medical Center.....	C E L T
St. Johns Regional Medical Center.....	A C L T
Torrance Memorial Medical Center.....	A C L T
Tri-City Medical Center.....	C CP L ▲
UC San Diego Health System Sulpizio CV Center.....	C E L T
Arrowhead Regional Medical Center.....	C CP E
Bakersfield Memorial Hospital.....	C L T
Community Hospital of the Monterey Peninsula.....	C L T
Emanate Health Medical Center.....	C E T
Emanuel Medical Center.....	C CP CP
Enloe Medical Center.....	C E T
Fresno Community Hospital and Medical Center.....	C E T
Garfield Medical Center.....	C CP T
Good Samaritan Hospital.....	C L T
Huntington Hospital.....	C L T
John Muir Medical Center - Concord Campus.....	C L T
Kaiser Foundation Hospital Fontana.....	C E T
Kaiser Permanente Medical Center.....	C L T
Kaiser Permanente Medical Center.....	C L T
Kaweah Delta Hospital District.....	C E T
Marin Health Medical Center.....	C L T
Memorialcare Orange Coast Medical Center.....	C E T
Northridge Hospital Medical Center.....	C L T
PIH Health Good Samaritan Hospital.....	C L T
Providence Saint John's Health Center.....	C L T
Providence St. Joseph Hospital.....	C L T
Santa Barbara Cottage Hospital.....	C L T
Santa Rosa Memorial Hospital.....	C L T
Scripps Memorial Hospital - La Jolla.....	C L T
Scripps Mercy Hospital - San Diego.....	C L T
Sharp Chula Vista Medical Center.....	C L T
Sharp Grossmont Hospital.....	C L T
Sharp Memorial Hospital.....	C L T
Shasta Regional Medical Center.....	C T CP
Stanford Healthcare.....	C E T
Sutter Delta Medical Center.....	C E CL
Washington Hospital.....	C E T
Adventist Health and Rideout.....	CL CP
Adventist Health - Simi Valley.....	C E
Children's Hospital of Los Angeles.....	E IM
Community Medical Center - Clovis.....	C E
Corona Regional Medical Center.....	C E
Dameron Hospital Association.....	C E

Dignity Health Dominican Hospital.....	C T
El Centro Regional Medical Center.....	E CP
Henry Mayo Newhall Hospital.....	C T
JFK Memorial Hospital.....	C CP
Kaiser Foundation Hospital.....	C E
Kaiser Permanente Irvine Medical Center.....	C E
Kaiser Permanente Oakland Medical Center.....	C IM
Lakewood Regional Medical Center.....	C T
Lucile S Packard Children's Hospital at Stanford University.....	E IM
Palmdale Regional Medical Center.....	C E
PIH Health Hospital - Whittier.....	C T
Providence Little Company of Mary Medical Center.....	C T
Providence Mission Hospital.....	C T
Providence St. Jude Medical Center.....	C T
Providence St. Mary Medical Center.....	C CP
Riverside University Health System Medical Center.....	C E
San Antonio Regional Hospital.....	T CP
Sequoia Hospital.....	C T
Southern California Hospital At Culver City.....	C E
Stanford Health Care ValleyCare.....	C E
Sutter Roseville Medical Center.....	C E
University of California Santa Monica.....	C E
Valley Presbyterian Hospital.....	C E
West Anaheim Medical Center.....	C CL
West Hills Hospital & Medical Center.....	C L
Adventist Health Simi Valley.....	CP
Adventist Medical Center - Hanford.....	E
Alameda Health System.....	C
Barstow Community Hospital.....	CP
California Hospital Medical Center.....	C
Children's Hospital of Orange County.....	IM
Chino Valley Medical Center.....	C
Dignity Health.....	C
Dignity Health Mercy Medical Center Redding.....	C
Fountain Valley Regional Hospital.....	C
Glendale Memorial Hospital and Health Center.....	C
Hollywood Presbyterian Hospital.....	C
John Muir Medical Center - Walnut Creek Campus.....	C
Kaiser Foundation - Roseville Medical Center.....	C
Kaiser Foundation Hospital South Sacramento.....	C
Kaiser Permanente Fremont Medical Center.....	C
Kaiser Permanente Medical Center.....	E
Kaiser Permanente Modesto Medical Center.....	C
Kaiser Permanente Orange County - Anaheim Medical Center.....	E
Kaiser Permanente Sacramento Medical Center.....	C
Kaiser Permanente San Rafael Medical Center.....	C
Kaiser Permanente Walnut Creek.....	C
Kaiser Permanente - Vallejo Medical Center.....	C
Kaiser Redwood City Medical Center.....	C
Los Alamitos Medical Center.....	C
Marshall Medical Center.....	E
Mercy Medical Center Merced.....	C
Methodist Hospital of South CA.....	C
Orange County Global Medical Center.....	C

Oroville Hospital.....	C
PIH Health Hospital - Downey.....	C
Pioneer Memorial Hospital.....	CP
Placentia Linda Hospital (TENET).....	C
Providence Holy Cross Medical Center.....	C
Providence Saint Joseph Medical Center.....	C
Providence Tarzana Medical Center.....	C
Queen of the Valley Medical Center.....	C
Rady Children's Hospital of San Diego.....	IM
Rancho Spring Medical Center.....	E
Regional Medical Center - San Jose.....	C
Ridgecrest Regional Hospital.....	E
San Joaquin General Hospital.....	E
San Ramon Regional Medical Center.....	C
Santa Teresa Community Hospital.....	C
Sherman Oaks Hospital.....	C
Sierra View District Hospital.....	C
St. Joseph Hospital.....	C
St. Mary Medical Center.....	C
St. Mary's Medical Center.....	C
St. Rose Hospital.....	C
Sutter Amador Surgery Center.....	E
Sutter Medical Center Sacramento.....	TV
Sutter Solano Medical Center.....	E
UCSF Benioff Children's Hospitals, Oakland.....	IM
Valley Children's Hospital.....	IM

COLORADO

The Medical Center of Aurora.....	C CP L T AF CP HF TV ▲ ◆
UCHealth Memorial Hospital.....	C CP E L T AF CP TV ▲ ◆
Rose Medical Center.....	A C CP L AF CL CP ▲ ◆
Medical Center of the Rockies.....	A C CP E L T ▲
Porter Adventist Hospital.....	A C CP L AF CP HF
Saint Joseph Hospital.....	C CP L T CP TV ▲
St. Anthony Hospital.....	A C CP L T CP ▲
St. Mary's Hospital & Medical Center.....	A C CP L T CP ▲
University of Colorado Hospital Authority.....	A C CP E L T ▲
Parkview Medical Center.....	C CP L T CP ▲
Lutheran Medical Center.....	A C CP CP ▲
North Colorado Medical Center.....	CP L T TV ▲
Penrose Hospital.....	C CP L T ▲
Valley View Hospital.....	A C CP E L
Boulder Community Health.....	C E L T
Good Samaritan Medical Center.....	C CP CP ▲
Littleton Adventist Hospital.....	C CP CP ▲
Parker Adventist Hospital.....	C CP CP ▲
Platte Valley Medical Center.....	C CP CP ▲
St. Anthony North Hospital.....	C CP CP ▲
Swedish Medical Center.....	C CP T ▲
Longmont United Hospital.....	C CP ▲
Mercy Regional Medical Center.....	C CP ▲
Presbyterian/St. Luke's Medical Center.....	C CP IM
Sky Ridge Medical Center.....	C CP ▲



St. Francis Medical Center	C CP ▲
Avista Adventist Hospital	C CP
Castle Rock Adventist	C CP
Children's Hospital Colorado	E IM
Highlands Ranch Hospital	C CP
McKee Medical Center	CP ▲
Poudre Valley Hospital	CP ▲
Colorado Plains Medical Center	CP
Denver Health Medical Center	L
North Suburban Medical Center	C
UCHealth Longs Peak Hospital	CP
UCHealth Memorial Hospital North	CP

CONNECTICUT

St. Vincent's Medical Center	G CP E L T ▲
Yale New Haven Hospital	A C IM L T TV
Hartford Hospital	A G E L T
St. Francis Hospital & Medical Center	A G E L T
Bridgeport Hospital	A C L T
Stamford Hospital	C E L T
Health Sciences Library	C E L T
Danbury Hospital	C E T
Trinity Health Of New England	A C E
Waterbury Hospital	C E T
Connecticut Children's Medical Center	E IM
Norwalk Hospital	C E
The Hospital of Central Connecticut	C E
Greenwich Hospital	C
Lawrence & Memorial Hospital	C
Midstate Medical Center	E
University of CT Health Center	C
John Dempsey Hospital	C
William W. Backus Hospital	E

DELAWARE

Christiana Care Health Services	C CP L T CL CP ▲
Bayhealth Hospital Kent Campus	C E L T
Beebe Healthcare	C E L T
St. Francis Hospital	A C CP E
Bayhealth Hospital Sussex Campus	C E
Bayhealth Medical Center	TV
Nanticoke Memorial Hospital	C
Nemours Children's Clinic Alfred I duPont Hospital	IM

DISTRICT OF COLUMBIA

The George Washington University Hospital	A G CP E L T ▲
MedStar Washington Hospital Center	A G E L T
Children's National Medical Center	IM

Registries	Accreditations	Awards
A AFib Ablation Registry™	AF Atrial Fibrillation	▲ Chest Pain - MI Registry™ Award Platinum
C CathPCI Registry™	CL Cardiac Cath Lab	▲ Chest Pain - MI Registry™ Award Gold
CP Chest Pain - MI Registry™	CP Chest Pain Center	▲ Chest Pain - MI Registry™ Award Silver
EP EP Device Implant Registry™	EP Electrophysiology	◆ HeartCARE Center
IM IMPACT Registry™	HF Heart Failure	
L LAAO Registry™	TV Transcatheter Valve	
T STS/ACC TVT Registry™		

FLORIDA

AdventHealth Ocala	C E L T CL CP HF TV ◆
AdventHealth Tampa	C CP E L T CP HF TV ◆
Bayfront Health St. Petersburg	C CP E L T CL HF ▲
Manatee Memorial Hospital	C CP E L T CP TV ▲
Sarasota Memorial Hospital	A C CP E L T CP TV
AdventHealth Orlando	A C E IM L T TV
UF Health Jacksonville	C CP E L T CP ▲
AdventHealth Waterman	A C CP E T CP
Mount Sinai Medical Center	C CP L T CP ▲
Osceola Regional Medical Center	A C CP L T CP
Physicians Regional Medical Center - Pine Ridge	A C CP L T CP
St. Joseph's & St. Joseph's Children's Hospitals	A C E IM L T
AdventHealth Celebration	A C CP E ▲
AdventHealth Daytona Beach	G E L T TV
Ascension St. Vincent's Riverside	A C E L T
Baptist Health System	A C E L T
Baptist Hospital of Miami	A C L T TV
Broward Health Medical Center	C E L T TV
Holy Cross Hospital	A C E L T
JFK Medical Center	A C L T CP
Lakeland Regional Health	C E L T CP
Lee Health - HealthPark Med Center	A C E L T
Memorial Hospital Jacksonville	A C L T CP
Morton Plant Hospital	A C E L T
Naples Community Hospital	C CP L T TV
North Florida Regional Medical Center	C L T CP TV
Tampa General Hospital	C L T AF CP
UF Health Shands Hospital	G E IM T CP
University of Miami Hospital and Clinics	A C E L T
West Florida Hospital	C CP AF CP ▲
Winter Haven Hospital	A C E L T
AdventHealth North Pinellas	C CP E CP
AdventHealth Zephyrhills	C CP E CP
Ascension Sacred Heart Pensacola	C E L T
Aventura Hospital and Medical Center	A C L T
Bayfront Health Port Charlotte	C L T CP
Bayfront Health Seven Rivers	C CP CP HF
Boca Raton Regional Hospital	C E L T
Central Florida Regional Hospital	C CP L T
Cleveland Clinic Florida	C E L T
Cleveland Clinic Indian River Hospital	C CP E T
Fort Walton Beach Medical Center	C L T CP
Jackson Memorial Hospital	C E IM T
Jupiter Medical Center	C E L T
Largo Medical Center	A C L T
Leesburg Regional Medical Center	C CP T CP
Northside Hospital	A C L T
Orlando Health	C IM L T
South Miami Hospital	A C L T
Tallahassee Memorial HealthCare	C L T CP
Wellington Regional Medical Center	C CP CP ▲
AdventHealth	C CP E
AdventHealth Dade City	G E CP

AdventHealth Heart of Florida	C E CP
Baptist Hospital	C L T
Bayfront Health Brooksville	C CP CP
Bethesda Health	C L T
Blake Medical Center	C L T
Brandon Regional Medical Center	C L T
Citrus Memorial Hospital	C L T
Cleveland Clinic Martin Health	C E T
Delray Medical Center	C L T
Fawcett Memorial Hospital	C L T
Flagler Hospital	C L T
Florida Medical Center a Campus of North Shore	C L CP
Holmes Regional Medical Center	C L T
Lakewood Ranch Medical Center	C CP CP
Lawnwood Medical Center and Heart Institute	C L T
Mayo Clinic	C L T
Memorial Regional Hospital /South Broward Hospital	C L T
North Okaloosa Medical Center	C CP CP
Ocala Regional Medical Center	C L T
Orange Park Medical Center	C L T
Palm Beach Gardens Medical Center	C L T
Palmetto General Hospital	C L T
Regional Medical Center Bayonet Point	C L T
Rockledge Regional Medical Center	C L T
The Villages Regional Hospital	C CP CP
Venice Regional Bayfront Health	C L T
Westside Regional Medical Center	C L T
Advent Health New Smyrna Beach	G E
AdventHealth Sebring	G E
AdventHealth Tampa	G E
AdventHealth Altamonte Springs	G E
AdventHealth Deland	G E
AdventHealth East Orlando	G E
AdventHealth Fish Memorial	G E
Ascension Sacred Heart Bay	C T
Ascension St. Vincent's Southside	C E
Bartow Regional Medical Center	C E
Bayfront Health Spring Hill	CP CP
Broward Health Imperial Point Medical Center	C E
Capital Regional Medical Center	C CP
Gulf Coast Regional Medical Center	C CP
HCA Oak Hill Hospital	C T
Jackson North Medical Center	C E
Jackson South Community Hospital	C E
Kendall Regional Medical Center	C L
Lake City Medical Center	C E
Lee Health - Gulf Coast Medical Center	C E
Lower Keys Medical Center	C CP
Mease Countryside Hospital	C E
Mercy Hospital	C T
Morton Plant North Bay Hospital	C E
North Broward Medical Center	C E
Northwest Medical Center	C L
Orlando Health Dr. P. Phillips Hospital	C CP

Orlando Health St. Cloud Hospital	C CP
Oviedo Medical Center	C CP
Parrish Medical Center	C E
Physicians Regional HS - Collier	C CP
Sacred Heart on the Emerald Coast	C E
Sebastian River Medical Center	C CP
South Florida Baptist Hospital	C E
St. Anthony's Health Care	C E
St. Joseph's Hospital - North	C E
St. Joseph's Hospital - South	C E
St. Lucie Medical Center	C CP
Wolfson Children's Hospital	E IM
AdventHealth Apopka	E
AdventHealth Lake Wales	CP
AdventHealth Palm Coast	C
Ascension St. Vincent's Clay County	C
Bayfront Health Punta Gorda	CP
Cape Canaveral Hospital	C
CCC Outpatient Cath Lab	C
Cleveland Clinic Tradition Hospital	C
Doctors Hospital of Sarasota	C
Englewood Community Hospital	C
Good Samaritan Medical Center	C
Halifax Health Medical Center	C
Health Central	C
Heart and Rhythm Institute of Trinity	E
Highlands Regional Medical	C
Joe DiMaggio Children's Hospital	IM
Johns Hopkins All Children's Hospital, Inc	IM
Medical Center of Trinity	C
Melbourne Regional Medical Center	C
Memorial Hospital of Tampa	C

Memorial Hospital West /South Broward Hospital District	C
Miami Children's Health System	IM
Nemours Children's Hospital	IM
North Shore Medical Center	C
Ocala Regional Medical Center	CP
Palm Bay Hospital	C
Palms of Pasadena Hospital	C
Palms West Hospital	C
Physicians Regional Medical Center - Collier Boulevard	CP
Poinciana Medical Center	C
Putnam Community Medical Center	C
Santa Rosa Medical Center	CP
South Bay Hospital	C
South Lake Hospital	C
South Miami Hospital	TV
South Seminole Hospital	C
West Marion Community Hospital	CP

GEORGIA

AU Medical Center, Inc	A G E L T CL CP EP
Medical Center Navicent Health	C E L T AF CP HF
St. Joseph's Hospital	C CP E L T CP ▲
University Health Care System	C CP E L T CP ▲
Hamilton Medical Center	C CP E CP ▲
Memorial University Medical Center	C CP L T CP
Redmond Regional Medical Center	C CP L T CP
St. Francis Hospital	C E T CL CP
St. Mary's Hospital	C CP E CP ▲
Phoebe Putney Memorial Hospital	C E L T
Piedmont Athens Regional Medical Center	C L T CP

Piedmont Atlanta Hospital	C L T CP
Piedmont Fayette Hospital	C CP CP ▲
Piedmont Henry Hospital	C CP CP ▲
Piedmont Newnan Hospital	C CP CP ▲
South Georgia Medical Center	C CP E ▲
Wellstar Kennestone Regional Medical Center	C E L T
Emory Saint Josephs Hospital of Atlanta	C L T
Emory University Hospital	C L T
Emory University Hospital Midtown	C L T
Floyd Medical Center	C E CP
Northeast Georgia Health System	C L T
Northside Hospital Gwinnett	C L T
Southern Regional Medical Center	C CP CP
Atlanta Medical Center	G E
Cartersville Medical Center	C CP
Children's Healthcare of Atlanta	E IM
Coliseum Medical Centers	G L
East Georgia Regional Medical Center	G E
Eastside Medical Center	C CP
Grady Health System	G E
Houston Medical Center	G E
Memorial Satilla Health	C CP
Piedmont Rockdale Hospital	C CP
Southeast Georgia Health System	G E
Spalding Regional Hospital	G E
Tanner Medical Center/Carrollton	C CP
Tanner Medical Center/Villa Rica	C CP
Tift Regional Medical Center	G E
Union General Hospital	CP HF
Wellstar Cobb Hospital	C E

Continues on next page



Improving Heart Failure Care Together

Ensure you are receiving the best in heart failure care by finding dedicated patient care champions at facilities that display the ACC Heart Failure Accreditation seal.

NORTHEAST

Massachusetts
Lawrence General Hospital
Lawrence, MA

New Jersey
Ocean Medical Center
Brick, NJ

JFK Medical Center
Edison, NJ

Southern Ocean Medical Center
Manahawkin, NJ

Jersey Shore University Medical Center
Neptune, NJ

Riverview Medical Center
Red Bank, NJ

New York
St. Joseph's Hospital Health Center
Syracuse, NY

MIDWEST

Indiana
Lutheran Hospital
Fort Wayne, IN

Parkview Heart Institute
Fort Wayne, IN

Ohio
Summa Health System - Akron Campus
Akron, OH

Mercy Medical Center
Canton, OH

Coshocton Regional Medical Center
Coshocton, OH

Firelands Regional Medical Center
Sandusky, OH

Wisconsin
ProHealth Waukesha Memorial Hospital
Waukesha, WI

SOUTH

Alabama
Andalusia Health
Andalusia, AL

Flowers Hospital
Dothan, AL

Florida
Bayfront Health Seven Rivers
Crystal River, FL

AdventHealth Ocala
Ocala, FL

Bayfront Health St. Petersburg
St. Petersburg, FL

AdventHealth Tampa
Tampa, FL

Georgia
Union General Hospital
Blairsville, GA

Medical Center Navicent Health
Macon, GA

Louisiana
Christus St Frances Cabrini Hospital
Alexandria, LA

Our Lady of the Lake Regional Medical Center
Baton Rouge, LA

East Jefferson General Hospital
Metairie, LA

Mississippi
Merit Health Wesley
Hattiesburg, MS

Baptist Memorial Hospital-DeSoto
Southaven, MS

North Carolina
Catawba Valley Medical Center
Hickory, NC

CarolinaEast Medical Center
New Bern, NC

South Carolina
Spartanburg Medical Center
Spartanburg, SC

Texas
CHI St. Luke's Health Memorial Lufkin
Lufkin, TX

Shannon Medical Center South
San Angelo, TX

Metropolitan Methodist Hospital
San Antonio, TX

CHRISTUS Mother Frances Hospital-Tyler
Tyler, TX

United Regional Health Care System
Wichita Falls, TX

Virginia
Augusta Health
Fishersville, VA

Winchester Medical Center
Winchester, VA

WEST

Alaska
Alaska Regional Hospital
Anchorage, AK

Arizona
Abruzzo Arizona Heart Hospital
Phoenix, AZ

California
Adventist Health Bakersfield
Bakersfield, CA

Colorado
The Medical Center of Aurora
Aurora, CO

Porter Adventist Hospital
Denver, CO

Nevada
Renown Regional Medical Center
Reno, NV

New Mexico
Lea Regional Medical Center
Hobbs, NM

Memorial Medical Center
Las Cruces, NM

Utah
Ogden Regional Medical Center
Ogden, UT

Wyoming
Sheridan Memorial Hospital
Sheridan, WY



ACC Accreditation Services
American College of Cardiology

Visit CardioSmart.org for:

- Tools to help you and your heart failure care team manage your condition
- Tips for healthy living
- Information to help you research and compare all the heart care services offered at your local hospitals www.cardiosmart.org/find-your-heart-a-home





WellStar North Fulton Hospital.....	C E
WellStar Paulding Hospital.....	C E
WellStar West Georgia Medical Center.....	C E
Adventist Health System Georgia.....	C
Atlanta Medical Center South.....	C
Coffee Regional Medical Center.....	C
Doctors Hospital - Augusta.....	C
East Georgia Regional Medical Center.....	CP
Emory Decatur Hospital.....	C
Emory Johns Creek Hospital.....	C
Fairview Park Hospital.....	C
John D Archbold Memorial Hospital.....	C
Meadows Regional Medical Center.....	C
Northeast Georgia Medical Center Braselton.....	C
Northside Hospital - Forsyth.....	C
Northside Hospital - Atlanta.....	C
Northside Hospital - Cherokee.....	C
Piedmont Columbus Regional Midtown.....	C
Piedmont Mountainside Hospital.....	CP
Piedmont Walton Hospital.....	CP
Polk Medical Center.....	CP
Upson Regional Medical Center.....	C
Wellstar Douglas Hospital.....	C

HAWAII

Straub Medical Center.....	C E IM L T
The Queen's Medical Center.....	C E L T
Pali Momi Medical Center.....	A C E
Hilo Medical Center.....	C E
Kaiser Permanente - Moanalua Medical Center.....	C E
Maui Memorial Medical Center.....	C

IDAHO

Saint Alphonsus Regional Medical Center.....	A C G P E L T CP
Eastern Idaho Regional Medical Center.....	C CP L T CP
Kootenai Health.....	A C E L T
Portneuf Medical Center.....	C CP L T CP
St. Luke's.....	A C E L T
Saint Alphonsus Medical Center - Nampa.....	C CP CP
St. Joseph Regional Medical Center.....	C CP E
West Valley Medical Center.....	C CP CP
Idaho Falls Community Hospital.....	C E
St. Luke's Magic Valley Regional Medical Center.....	C

ILLINOIS

OSF HealthCare Saint Francis Medical Center.....	A C CP E IM L T
Riverside Health Care.....	C CP E L T CP HF

Registries

- A Afib Ablation Registry™
- C CathPCI Registry™
- CP Chest Pain - MI Registry™
- EP EP Device Implant Registry™
- IM IMPACT Registry™
- L LAO Registry™
- T STS/ACC TVT Registry™

Accreditations

- AF Atrial Fibrillation
- CL Cardiac Cath Lab
- CP Chest Pain Center
- EP Electrophysiology
- HF Heart Failure
- TV Transcatheter Valve

Awards

- Chest Pain - MI Registry™ Award Platinum
- Chest Pain - MI Registry™ Award Gold
- Chest Pain - MI Registry™ Award Silver
- HeartCARE Center

Loyola University Medical Center.....	A C CP E L T
Copley Memorial Hospital.....	A C CP E CP
Edward Hospital.....	C CP E L T
Memorial Hospital Carbondale.....	C CP E L T
St. Elizabeth's Hospital.....	C CP L T CP
AMITA Health Adventist Medical Center Hinsdale.....	C CP E L
AMITA Health Resurrection Medical Center.....	C E L T CP
AMITA Health Saint Joseph Medical Center.....	C E L T CP
Memorial Medical Center.....	C CP L T
OSF Saint Anthony Medical Center.....	C CP E L T
University of Chicago Medical Center.....	C CP E L T
AMITA Health Adventist Medical Center GlenOaks.....	C CP E
AMITA Health Adventist Medical Center La Grange.....	C CP E
AMITA Health Alexian Brothers Medical Center.....	C E L T
Blessing Hospital.....	C L T CP
Carle BroMenn Medical Center.....	C CP CP
CGH Medical Center.....	C CP E CP
Highland Park Hospital.....	A C L T
NorthShore University Health System.....	A C L T
Northwest Community Hospital.....	C E L T
Northwestern Medicine McHenry Hospital.....	C CP T
OSF Saint Joseph Medical Center.....	C CP E
Protestant Memorial Medical Center.....	C CP CP
Rush University Medical Center.....	A C L T
Trinity Medical Center - Rock Island.....	C CP L T
UnityPoint Health Methodist.....	C CP E T
University of Illinois Medical Center at Chicago.....	C E L T
Advocate Christ Medical Center.....	C L T
Advocate Good Samaritan Hospital.....	C L T
Advocate Illinois Masonic Medical Center.....	C L T
Advocate Lutheran General Hospital.....	C L T
Advocate Sherman Hospital.....	C L T
AMITA Health Adventist Medical Center Bolingbrook.....	C CP
AMITA Health Mercy Medical Center.....	C E L
AMITA Health Saints Mary and Elizabeth Medical Center.....	C E CP
AMITA Health St. Mary's Hospital Kankakee.....	C E CP
Carle Foundation Hospital.....	C L T
Elmhurst Memorial Healthcare.....	C CP E
Franciscan Health Olympia Fields.....	C CP
MacNeal Hospital.....	C CP E
Memorial Hospital Shiloh.....	C CP
Mercy Hospital & Medical Center.....	C CP E
Northwestern Lake Forest Hospital.....	C CP
Northwestern Medicine Huntley Hospital.....	C CP
Northwestern Memorial Hospital.....	C L T
Palos Health.....	C L T
Prairie Heart Institute at St. John's Hospital.....	C L T
Rush Oak Park Hospital.....	C CP
UnityPoint Health Methodist I Proctor.....	C CP E

Northwestern Medicine Northwestern Medicine.....	C CP T
OSF Saint Joseph Medical Center.....	C CP E
Protestant Memorial Medical Center.....	C CP CP
Rush University Medical Center.....	A C L T
Trinity Medical Center - Rock Island.....	C CP L T
UnityPoint Health Methodist.....	C CP E T
University of Illinois Medical Center at Chicago.....	C E L T
Advocate Christ Medical Center.....	C L T
Advocate Good Samaritan Hospital.....	C L T
Advocate Illinois Masonic Medical Center.....	C L T
Advocate Lutheran General Hospital.....	C L T
Advocate Sherman Hospital.....	C L T
AMITA Health Adventist Medical Center Bolingbrook.....	C CP
AMITA Health Mercy Medical Center.....	C E L
AMITA Health Saints Mary and Elizabeth Medical Center.....	C E CP
AMITA Health St. Mary's Hospital Kankakee.....	C E CP
Carle Foundation Hospital.....	C L T
Elmhurst Memorial Healthcare.....	C CP E
Franciscan Health Olympia Fields.....	C CP
MacNeal Hospital.....	C CP E
Memorial Hospital Shiloh.....	C CP
Mercy Hospital & Medical Center.....	C CP E
Northwestern Lake Forest Hospital.....	C CP
Northwestern Medicine Huntley Hospital.....	C CP
Northwestern Memorial Hospital.....	C L T
Palos Health.....	C L T
Prairie Heart Institute at St. John's Hospital.....	C L T
Rush Oak Park Hospital.....	C CP
UnityPoint Health Methodist I Proctor.....	C CP E

INDIANA

Lutheran Hospital.....	A C CP L T AF CL CP HF TV
Indiana University Health Methodist Hospital.....	C CP E IM L T CL EP
Parkview Heart Institute.....	A C E L T AF EP HF
Ascension St. Vincent Evansville.....	C CP E L T
Deaconess Gateway Heart Hospital.....	C CP E L T
Franciscan Health Indianapolis.....	C CP L T TV
Indiana University Health Arnett Hospital.....	C CP E T CP
Indiana University Health Ball Memorial Hospital.....	C CP E L T
Indiana University Health Bloomington.....	C CP E L T
Columbus Regional Hospital.....	C CP E CP
Northwest Health La Porte.....	A C CP CP EP
Northwest Health Porter.....	C L T AF CP
Union Hospital.....	C E L T CP

West Suburban Medical Center.....	C CP CP
Advocate Condell Medical Center.....	C L
Advocate Good Shepherd Hospital.....	C T
AMITA Health Saint Francis Hospital of Evanston.....	C E
AMITA Health Saint Joseph Hospital Chicago.....	C E
AMITA Health Saint Joseph Hospital Elgin.....	C E
AMITA Health St. Alexius Medical Center.....	C E
Anderson Hospital.....	C CP
Central DuPage Hospital.....	C T
Genesis Medical Center, Silvis.....	C E
Good Samaritan Hospital.....	C CP
Gottlieb Memorial Hospital.....	C E
Heartland Regional Medical Center.....	C CP
Javon Bea Hospital Riverside.....	C CP
Mount Sinai Hospital.....	C E
OSF Heart of Mary Medical Center.....	E CP
Sarah Bush Lincoln Health Center.....	C E
Silver Cross Hospital.....	C E
Swedish Covenant Hospital.....	C E
Advocate Childrens Hospital Oak Lawn.....	IM
Advocate South Suburban Hospital.....	C
AdvocateTrinity Hospital.....	C
Alton Memorial Hospital.....	C
Delnor Hospital.....	C
FHN Memorial Hospital.....	C
Gateway Regional Medical Center.....	C
Glenbrook Hospital.....	C
Ingalls Memorial Hospital.....	CP
Jersey Community Hospital District.....	E
Katherine Shaw Bethea Hospital.....	C
Lurie Children's Hospital of Chicago.....	IM
Northwestern Medicine Kishwaukee Hospital.....	C
Norwegian American Hospital.....	C
Red Bud Regional Hospital.....	CP
Southern Illinois Hospital - Herrin Hospital.....	CP
SSM Health Good Samaritan Hospital - MT Vernon.....	CP
St. Mary's Hospital.....	C
Vista Medical Center.....	C

INDIANA

Lutheran Hospital.....	A C CP L T AF CL CP HF TV
Indiana University Health Methodist Hospital.....	C CP E IM L T CL EP
Parkview Heart Institute.....	A C E L T AF EP HF
Ascension St. Vincent Evansville.....	C CP E L T
Deaconess Gateway Heart Hospital.....	C CP E L T
Franciscan Health Indianapolis.....	C CP L T TV
Indiana University Health Arnett Hospital.....	C CP E T CP
Indiana University Health Ball Memorial Hospital.....	C CP E L T
Indiana University Health Bloomington.....	C CP E L T
Columbus Regional Hospital.....	C CP E CP
Northwest Health La Porte.....	A C CP CP EP
Northwest Health Porter.....	C L T AF CP
Union Hospital.....	C E L T CP

Ascension St. Vincent Heart Center.....	C E L T
Ascension St. Vincent Hospital.....	C E IM L
Clark Memorial Hospital.....	C CP E CP
Community Hospital.....	C E L T
Deaconess Hospital.....	C CP E
Goshen Hospital.....	C CP E
Indiana University Health North Hospital.....	C CP E
Indiana University Health Saxony Hospital.....	C CP E
Indiana University Health West Hospital.....	C CP E
Methodist Hospitals Southlake Campus.....	C E CL CP
Reid Health.....	C E L T
Saint Joseph Health System.....	A C L T
Community Heart and Vascular Hospital.....	C L T
Dupont Hospital.....	C CP CP
Elkhart General Hospital.....	C T CL
Franciscan Health Crown Point.....	C L CP
Franciscan Health Lafayette East.....	C CP
Kosciusko Community Hospital.....	C CP CP
Marion General Hospital.....	C CP E
Memorial Hospital of South Bend.....	C L T
Methodist Hospitals Northlake Campus.....	C CL CP
St. Catherine Hospital.....	C E CP
St. Mary Medical Center.....	C L CP
Baptist Health Floyd.....	C L
Franciscan Health - Dyer.....	C CP
Franciscan Health - Hammond.....	C CP
Franciscan Health - Michigan City.....	C CP
Health and Hospital Corporation of Marion County.....	C E
Hendricks Regional Health.....	C CP
Pinnacle Healthcare, LLC.....	C E
Riley Hospital for Children Indiana University Health.....	E IM
Riverview Health.....	C CP
Community Hospital Anderson.....	C
Community Hospital East.....	C
Community Hospital South.....	C
Community Howard Regional Health.....	C
Franciscan Health Munster.....	C
Good Samaritan Heart Center.....	C
Hancock Memorial Hospital.....	C
Memorial Hospital and Health Care Center.....	C
Scott Memorial Hospital.....	CP
St. Elizabeth Dearborn.....	E
St. Joseph Hospital.....	CP
St. Vincent Kokomo.....	CP
Terre Haute Regional Hospital.....	C
Union Hospital Clinton.....	CP
Witham Health System.....	C

IOWA

Mercy Medical Center - Des Moines.....	A C CP L T CP
UnityPoint Health - St. Luke's Hospital.....	C CP L T CP TV
Allen Memorial Hospital.....	C CP T CP
MercyOne North Iowa Medical Center.....	A C CP E T

MercyOne Siouxland Medical Center.....	C CP E T
UnityPoint Health - St Luke's Sioux City.....	A C CP E
Genesis Medical Center, Davenport.....	C E L T
Iowa Methodist Medical Center.....	C CP L T
Mercy Iowa City.....	C CP E
University of Iowa Hospitals and Clinics.....	C IM L T
MercyOne Waterloo Medical Center.....	C CP E CP
Trinity Medical Center - Bettendorf.....	C CP
Trinity Regional Medical Center.....	C CP
Iowa Lutheran Hospital.....	C CP
Mercy Medical Center.....	C T
MercyOne Dubuque Medical Center.....	C T
The Finley Hospital.....	C CP
CHI Health Mercy.....	C
MercyOne Clinton Medical Center.....	C
Ottumwa Regional Health Center.....	C

KANSAS

Advent Health Shawnee Mission.....	A C CP E L T
The University of Kansas Health System.....	A C CP E L T
Hays Medical Center.....	C CP E L CP
Stormont - Vail HealthCare.....	C CP L T TV
Olathe Medical Center.....	C CP L T
Overland Park Regional Medical Center.....	A C CP E L
Providence Medical Center.....	C CP E CP
Salina Regional Health Center.....	C E L T CP
University of Kansas Health System St. Francis Campus.....	C CP E CP
Wesley Medical Center.....	C CP L T
Via Christi Hospitals in Wichita.....	C L T
Western Plains Medical Complex.....	C E CP
Menorah Medical Center.....	C CP
Mercy Regional Health Center.....	C E
Newman Regional Health.....	C E
St. Catherine Hospital.....	C CP
St. Luke's South Hospital.....	C E
Kansas Medical Center.....	E
Lawrence Memorial Hospital.....	C
Via Christi Hospital - Pittsburgh KS.....	E
Wesley Woodlawn Hospital and ER.....	C
William Newton Memorial Hospital.....	C

KENTUCKY

Baptist Health Lexington.....	C CP E L T AF CL CP TV
Baptist Health Paducah.....	C CP E L T CL CP TV
Norton Audubon Hospital.....	C L T CL CP TV
Pikeville Medical Center.....	C CP L T CL CP
U of L - Jewish Hospital.....	C CP E L T CP
Baptist Health Louisville.....	C CP T CP HF
Saint Elizabeth Healthcare Edgewood.....	C CP E L T
Saint Joseph Hospital.....	A C CP E T CP
University of Kentucky.....	C CP E IM L T
King's Daughters Medical Center.....	C E L T CP

Norton Hospital.....	C L T CL CP
Saint Joseph East.....	C CP E CL CP
The Medical Center.....	C E L T CP
Baptist Health Corbin.....	C CP CP
Ephraim McDowell Regional Medical Center.....	C CP E CP
Mercy Health Lourdes Hospital.....	C E L T
Clark Regional Medical Center.....	C E CP
Harrison Memorial Hospital.....	C E CP
Hazard ARH Regional Medical Center.....	C CP E
Highlands ARH Regional Medical Center.....	C E CP
Lake Cumberland Regional Hospital.....	C E CP
Norton Brownsboro Hospital.....	C CL CP
St. Claire Regional Medical Center.....	C CP E
TJ Regional Health.....	C E CP
Baptist Health Madisonville.....	C E
Frankfort Regional Medical Center.....	C CP
Georgetown Community Hospital.....	CP HF
Hardin Memorial Hospital.....	C CP
Jackson Purchase Medical Center.....	E CP
Meadowview Regional Medical Center.....	C CP
Owensboro Health Regional Hospital.....	C L
Saint Joseph London.....	C E
TriStar Greenview Regional Hospital.....	C CP
Baptist Health Richmond.....	C
Bluegrass Community Hospital.....	CP
Bourbon Community Hospital.....	CP
CHI Saint Joseph Health System, St. Joseph Berea.....	CP
Fleming County Hospital.....	CP
Logan Memorial Hospital.....	CP
Murray Calloway County Hospital.....	C
Norton Children's Hospital.....	IM
Norton Women's & Children's Hospital.....	CP
Paul B. Hall Regional Medical Center.....	CP
Spring View Hospital.....	CP
St. Mary & Elizabeth Hospital.....	C
Three Rivers Medical Center.....	CP
University of Louisville Hospital.....	C

LOUISIANA

CHRISTUS Ochsner St. Patrick Hospital.....	C CP L T CP TV
CHRISTUS St. Frances Cabrini Hospital.....	C CP T CL CP HF
Ochsner Medical Center.....	A C E IM L T EP
Our Lady of the Lake Regional Medical Center.....	C CP L T AF HF
St. Francis Medical Center.....	C CP E L T CP
CHRISTUS Highland Medical Center.....	C CP L T CP TV
Ochsner - LSU Health Shreveport.....	A C CP E L T
St. Tammany Health System.....	C CP E T CP
Tulane University Hospital and Clinic.....	C CP L T CP
Willis - Knighton Medical Center.....	A C E L T CP
East Jefferson General Hospital.....	C E T HF TV
Lafayette General Medical Center.....	C CP L T



Our Lady of Lourdes Heart Hospital	C CP L T TV
Rapides Regional Medical Center	C CP L T
Terrebonne General Medical Center	C CP E T
Baton Rouge General Medical Center	C L T
Glenwood Regional Medical Center	C T CP
Lake Charles Memorial Hospital	T TV
Lakeview Regional Medical Center, A Campus of Tulane	C CP
Our Lady of Lourdes Regional Medical Center	C CP
University Medical Center New Orleans	L T
Acadian Medical Center	E
Children's Hospital of New Orleans	IM
Cypress Pointe Surgical Hospital	E
Lane Regional Medical Center	CP
Mercy Regional Medical Center	E
Minden Medical Center	C
North Oaks Medical Center	E
Northern Louisiana Medical Center	CP
Ochsner Baptist Medical Center	C
Ochsner Medical Center - Baton Rouge	C
Ochsner Medical Center - West Bank	C
Ochsner Medical Center - Kenner	C
Ochsner/LSU Health Shreveport Monroe Medical	E
Slidell Memorial Hospital and Medical Center	C
St. Bernard Parish Hospital	C
St. Charles Parish Hospital	C
Touro Infirmary Medical Center	E
West Calcasieu Cameron Hospital	E
West Jefferson Medical Center	C
Willis Knighton Bossier	C
Willis Knighton Pierremont	C

Ochsner/LSU Health Shreveport Monroe Medical	E
Slidell Memorial Hospital and Medical Center	C
St. Bernard Parish Hospital	C
St. Charles Parish Hospital	C
Touro Infirmary Medical Center	E
West Calcasieu Cameron Hospital	E
West Jefferson Medical Center	C
Willis Knighton Bossier	C
Willis Knighton Pierremont	C

MAINE

Maine Medical Center	C CP E IM L T
Central Maine Medical Center	C E T
Eastern Maine Medical Center	C L T
York Hospital	C E

MARYLAND

Adventist Healthcare White Oak Medical Center	C CP E T CP
Anne Arundel Medical Center	C CP E CP
Johns Hopkins Hospital	C E IM L T
MedStar Union Memorial Hospital	C E L T
TidalHealth Peninsula Regional, Inc.	C E L T
University of Maryland Medical Center Cardiology	C IM L T
UPMC Western Maryland	C CP E
Adventist HealthCare Shady Grove Medical Center	C GL CP

Registries	Accreditations	Awards
A AFib Ablation Registry™	AF Atrial Fibrillation	▲ Chest Pain - MI Registry™ Award Platinum
C CathPCI Registry™	CL Cardiac Cath Lab	▲ Chest Pain - MI Registry™ Award Gold
CP Chest Pain - MI Registry™	CP Chest Pain Center	▲ Chest Pain - MI Registry™ Award Silver
E EP Device Implant Registry™	EP Electrophysiology	◆ HeartCARE Center
IM IMPACT Registry™	HF Heart Failure	
L LAO Registry™	TV Transcatheter Valve	
T STS/ACC TVT Registry™		

MedStar Southern Maryland Hospital Center	C CP E
Sinai Hospital of Baltimore	C L T
Suburban Hospital	G E T
University of Maryland Saint Joseph Medical Center	C L T
Frederick Health Hospital	C E
Holy Cross Hospital of Silver Spring, Inc.	C E
Howard County General Hospital	C E
MedStar Franklin Square Medical Center	C E
Carroll Hospital Center	C
Holy Cross Germantown Hospital	E
Johns Hopkins Bayview Medical Center	C
Meritus Medical Center	C
Prince George's Hospital Center	C
Saint Agnes Hospital	C
UM Baltimore Washington Medical Center	C
UM Upper Chesapeake Medical Center, Inc.	C
University of Maryland Shore Regional Health	C
Walter Reed National Military Medical Center	C

MASSACHUSETTS

Lahey Hospital and Medical Center	A C E L T CL EP
Lawrence General Hospital	C E CL CP HF
Baystate Medical Center	A C E L T
Boston Medical Center	C E L T
Brigham & Womens Hospital	C E L T
Cape Cod Hospital	C E L T
Charlton Memorial Hospital	C E L T
Massachusetts General Hospital	C IM L T
Saint Vincent Hospital	C E L T
Tufts Medical Center	C E L T
UMASS Memorial Medical Center	C E L T
Beth Israel Deaconess Medical Center	C L T
Lowell General Hospital	C E CL
Mount Auburn Hospital	C E T
St. Elizabeths Medical Center	C L T
Anna Jaques Hospital	C E
Berkshire Medical Center, Inc.	C E
Mercy Hospital	C E
Milford Regional Medical Center	C E
Beth Israel Deaconess Hospital - Plymouth, Inc.	C
Beverly Hospital	C
Boston Children's Hospital	IM
Caritas Holy Family Hospital	C
Cooley Dickinson Hospital	C
Good Samaritan Medical Center	C
Melrose - Wakefield Hospital	C
MetroWest Medical Center	C
North Shore Medical Center - Salem Hospital	C
Saint Anne's Hospital	C
Signature Healthcare Brockton Hospital	C
South Shore Health System	C

MICHIGAN

UP Health System - Marquette	C CP E L T CL CP
Spectrum Health	A C CP IM L T
MidMichigan Medical Center - Midland	A C CP L T
Bronson Methodist Hospital	C CP E L T
Edward W. Sparrow Hospital Association	C CP L T
Mercy Health	A C E L T
St. Joseph Mercy Hospital Ann Arbor	A C E L T
St. Joseph Mercy Oakland	A C E L T
Henry Ford Macomb Hospital	A C L T
McLaren Bay Region	C E L T
McLaren Flint	C E L T
McLaren Greater Lansing	C E L T
McLaren Macomb	C E L T
McLaren Northern Michigan	C E L T
Michigan Medicine	C IM L T
Munson Medical Center	C E L T
Allegiance Health	C L T
Ascension Health	C L T
Ascension Providence Hospital Southfield	C L T
Ascension St. John Hospital	C L T
Beaumont Hospital, Dearborn	C L T
Beaumont Hospital, Royal Oak	C L T
Borgess Medical Center	C L T
Covenant Healthcare	C L T
Harper University Hospital	C L T
Henry Ford Heart and Vascular Institute	C L T
Lakeland HealthCare	A G T
McLaren Port Huron Hospital	C E T
Metro Health Hospital	C CP
Beaumont Hospital, Troy	C T
Garden City Hospital	C E
Holland Hospital	C CP
Hurley Medical Center	A C
McLaren Oakland	C E
Mercy Health Saint Mary's	C E
Saint Mary Mercy Hospital	C E
Ascension Genesys Hospital	C
Ascension Macomb - Oakland Hospital	C
Ascension Providence Rochester Hospital	C
Beaumont Hospital, Farmington Hills	C
Beaumont Hospital, Grosse Pointe	C
Beaumont Hospital, Trenton	C
Beaumont Hospital, Wayne	C
Henry Ford Health System West Bloomfield	C
Henry Ford Wyandotte Hospital	C
Huron Valley Sinai Hospital	C
Lake Huron Medical Center	C
McLaren Central Michigan	E
McLaren Thumb Region	E
Monroe Regional Hospital	C
ProMedica Monroe Regional Hospital	CL
Providence Park Hospital	C
Sinai - Grace Hospital	C

MINNESOTA

CentraCare Heart & Vascular Center	A C CP E L T
St. Mary's Medical Center	C CP L T CP
University of Minnesota Health, Heart Care Minneapolis	A C IM L T
Mayo Clinic Hospital - Saint Marys Campus	C IM L T
Mercy Hospital part of Allina Health	C E L T
Minneapolis Heart Institute at Abbott Northwestern	C E L T
Minneapolis Heart Institute at United Hospital	C E L T
North Memorial Health	C E L T
St Josephs Hospital	A C L T
St. Luke's Hospital	C E L T
University of Minnesota Health, Heart Care Edina	A C L T
Park Nicollet Methodist Hospital	C L T
Regions Hospital	C L T
Sanford Bemidji Medical Center	C CP
Hennepin County Medical Center	C E
Children's Minnesota	IM
Essentia Health - St. Joseph's Medical	C
Mayo Clinic Health System Mankato	C
Ridgeview Medical Center	C
St John's Hospital	C
University of Minnesota Health, Heart Care Burnsville	C

MISSISSIPPI

Merit Health Wesley	C CP E AF CP HF
Baptist Memorial Hospital - DeSoto	C CP CL CP HF
Baptist Memorial Hospital - Golden Triangle	C CP L CL CP
Forrest General Hospital	C CP E L T
Mississippi Baptist Medical Center	C CP T CP
North Mississippi Medical Center	C CP L T
St. Dominic - Jackson Memorial Hospital	A C CP L T
University of Mississippi Medical Center	CP L T TV
Anderson Regional Medical Center	C CP CP
Baptist Memorial Hospital North Mississippi	C CP T
Magnolia Regional Health Center	C CP CP
Ocean Springs Hospital	C CP L T
Merit Health Central	C CP CP
Merit Health River Oaks	C CP CP
Merit Health River Region	C CP CP
Methodist Olive Branch Hospital	C CP CP
Southwest MS Regional Medical Center	C CP E
Baptist Memorial Hospital - North Mississippi	CL CP
Memorial Hospital at Gulfport	C CP
Merit Health Biloxi	C CP

MISSOURI

Barnes Jewish Hospital /Washington University	A C CP E L T
Mosaic Life Care at St. Joseph	C CP E L T CP
Research Medical Center	A C CP E L T
Cox Medical Center South	C CP E L T
North Kansas City Hospital	C CP E L T
Saint Francis Medical Center	C CP L T CP
Centerpoint Medical Center	C CP E L
Freeman Health System	C CP L T
Liberty Hospital	C CP E CP
Mercy Hospital Joplin	C CP L T
Mercy Hospital South	C CP L T
MERCY Hospital Springfield	C CP L T
Mercy Hospital St. Louis	C CP L T
Saint Luke's Hospital of Kansas City	A C E L T
Southeast Missouri Hospital	C CP E T
SSM Health Saint Louis University Hospital	C CP L T
University of Missouri Hospital and Clinics	A C E L T
Boone Hospital Center	C L T TV
Christian Hospital BJC Healthcare	C CP T
Cox Medical Center Branson	C CP E
Lee's Summit Medical Center	C CP E
Poplar Bluff Regional Medical Center - Oak Grove	C CP CL CP
Saint Joseph Medical Center	C CP E CP
SSM Health DePaul Hospital - St. Louis	C CP L T
St Luke's Hospital	C E L T
St. Mary's Medical Center	C CP CP
Truman Medical Centers	C CP E
Capital Region Medical Center	C CP
Hannibal Regional Hospital	C CP E
Missouri Baptist Medical Center	C L T
Noble Health Audrain Community Hospital	C CP E
SSM Health - St Marys Hospital Jefferson City	C CP
SSM St. Joseph Hospital - St. Charles	C CP E
Children's Mercy Kansas City	E IM
Citizens Memorial Hospital	CP
Mercy Hospital Jefferson	C CP
Mercy Hospital Washington East Community	C CP
Northeast Regional Medical Center	C CP
Saint Luke's East Hospital	C E
Saint Luke's Northland Hospital	C E
SSM Health St. Clare Hospital - Fenton	C CP
SSM Health St. Mary's Hospital - St. Louis	C CP

MISSOURI

Pascagoula Hospital	C CP
Rush Foundation Hospital	C CP
Singing River Gulfport	C CP
Bolivar Medical Center	CP
Delta Health - Northwest Regional	CP
Delta Regional Medical Center	CP
Merit Health Madison	CP
Merit Health Natchez	CP
Merit Health Rankin	CP

MISSOURI

SSM St. Joseph Hospital West	C CP
St. Luke's Des Peres Hospital	C E
Barnes Jewish St. Peters Hospital	C
Belton Regional Medical Center	CP
Bothwell Regional Health Center	E
Heart Care Center, LLC	E
Lake Regional Health System	C
Moberly Regional Medical Center	C
Ozarks Healthcare	C
Phelps County Regional Medical Center	C
Progress West Healthcare	C
SSM Cardinal Glennon Children's Medical	IM
St. Louis Children's Hospital	IM

MONTANA

Billings Clinic	C CP L T CP TV
St. Vincent Healthcare	A C CP L T CP
Logan Health	C CP L T
Community Medical Center	C CP E CP
Providence St. Patrick Hospital	A C L T
St. James Health Care	C CP
Bozeman Health	C CP
Benefis Healthcare	C

NEBRASKA

Bryan Medical Center	C E L T CL EP
Nebraska Medicine	C CP L T CP
CHI Health CUMC - Bergan Mercy	A C L T
CHI Health Nebraska Heart	A C L T
Faith Regional Health Services	C CP CP
Kearney Regional Medical Center	C CP T
Nebraska Methodist Hospital	C L T
Great Plains Health	C E
Mary Lanning Healthcare	C CP
Nebraska Medicine Bellevue	C CP
CHI Health Good Samaritan	C
CHI Health Immanuel	C
CHI Health Lakeside	C
CHI Health St. Francis	C
Children's Hospital and Medical Center	IM

NEVADA

Saint Mary's Regional Medical Center	C CP E L T CL CP TV
Renown Regional Medical Center	C CP L T CP HF
Centennial Hills Hospital Medical Center	CP E CP
Dignity Health - St. Rose Dominican, Siena Campus	C CP T CP
MountainView Hospital	C CP L T
Northeastern Nevada Regional Hospital	C CP CL CP
Northern Nevada Medical Center	C CP CP
Spring Valley Hospital Medical Center	CP E T CP
University Medical Center of Southern Nevada	C CP CP
Desert Springs Hospital Medical Center	CP E CP
Dignity Health - St. Rose Dominican, San Martin Campus	C CP CP



North Vista Hospital	C CP CP
Summerlin Hospital Medical Center	CP E CP
Sunrise Hospital and Medical Center	C L T
Valley Hospital Medical Center	CP E CP
Carson Tahoe Regional Medical Center	C E
Henderson Hospital	CP E
Renown South Meadows Medical Center	CP
Southern Hills Hospital	C

NEW HAMPSHIRE

Catholic Medical Center	C E L T
Concord Hospital	C L T
Dartmouth Hitchcock Medical Center	C L T
Exeter Hospital	C CL
Parkland Medical Center	C CP
Southern New Hampshire Medical Center	C E
St. Joseph Hospital	C E
Elliot Hospital	C
Wentworth - Douglass Hospital	C

NEW JERSEY

Jersey Shore University Medical Center	C CP E L T CL CP HF
JFK Medical Center	C CP CL CP HF
Ocean Medical Center	C CP CL CP HF
Riverview Medical Center	C CP CL CP HF
Cooper University Hospital	C E L T TV
Hackensack University Medical Center	C CP L T CP
Morristown Medical Center	C E L T TV
Newark Beth Israel Medical Center	C E IM L T
St. Francis Medical Center	A C E L T
The Valley Hospital	C CP E L T
Atlanticare Regional Medical Center	C E L T
Bayshore Medical Center	C CP CP
Englewood Health	C CP L T
Robert Wood Johnson University Hospital	C E L T
Southern Ocean Medical Center	C CP CP HF
Deborah Heart & Lung Center	C L T
Saint Barnabas Medical Center	E L T
Virtua Our Lady of Lourdes	E L T
Capital Health Medical Center - Hopewell	CP CP
Inspira Medical Center Vineland	CP CP
St. Mary's General Hospital	L CP
St. Michael's Medical Center	E T
University Hospital	E L
CentraState Medical Center	CP
Chilton Medical Center	C
Clara Maass Medical Center	CP

Hackensack UMC Mountainside	C
Hackettstown Medical Center	CP
Hunterdon Healthcare System	C
Inspira Medical Center - Mullica Hill	CP
Inspira Medical Center Elmer Hospital	CP
Inspira Medical Center Woodbury	CP
Monmouth Medical Center	C
Newton Medical Center	C
Overlook Medical Center	C
Raritan Bay Medical Center	CP
Robert Wood Johnson University Hospital Somerset	C
Saint Clare's Hospital	C
St. Joseph's Health	T
Virtua Our Lady of Lourdes Hospital	EP

NEW MEXICO

Presbyterian Healthcare Services	A C CP E IM L T
Lovelace Medical Center	C CP L T
Memorial Medical Center	C E CP HF
San Juan Regional Medical Center	C CP E CP
University of New Mexico Hospital	C E L T
Gerald Champion Regional Medical	C CP E
MountainView Regional Medical Center	C CP CP
Carlsbad Medical Center	C CP
Eastern New Mexico Medical Center	C CP
CHRISTUS St. Vincent Regional Medical Center	C
Lea Regional Medical Center	HF
Los Alamos Medical Center	CP

NEW YORK

Strong Memorial Hospital	A C CP E IM L T TV
St. Elizabeth Medical Center	C CP E L T CL EP
The Mount Sinai Hospital	C CP E IM L T TV
Bellevue Hospital Center	A C CP E L CL
New York Presbyterian/Queens	C CP E L T
Stony Brook University Hospital	A C CP L T CP
Montefiore Medical Center	C E IM L T
Mount Sinai St Luke's	C CP L T
New York - Presbyterian Weill Cornell Medical Center	C CP IM L T
St. Joseph's Hospital Health Center	C L T CP HF
Vassar Brothers Medical Center	C E L T TV
Westchester County Health Care Corp	C E IM L T
Albany Medical Center Hospital	C E L T
Bassett Medical Center	C E L T
Cayuga Medical Center	C CP CP
Jamaica Hospital Medical Center	C CP E
Mercy Hospital of Buffalo	C E L T

New York - Presbyterian Brooklyn Methodist Hospital	C CP L T
New York - Presbyterian /Columbia University Irving	C CP L T
NYU Langone Health - Tisch Hospital	C IM L T
St. Francis Hospital	C L T TV
Upstate Medical University	C E L T

Arnot Ogden Medical Center	C CP E
Bronx Care Health System	CP E
Ellis Hospital	C L T
Gates Vascular Institute	C L T
Good Samaritan Hospital	C L T
Good Samaritan Hospital Medical Center	C E T
Maimonides Medical Center Division of Cardiology	C L T
New York - Presbyterian Lawrence Hospital	C CP CP
Northwell Health Lenox Hill Hospital	C L T
Northwell Health North Shore University Hospital	C L T
Northwell Health Southside Hospital	C L T
Northwell Health Staten Island Hospital	C L T
NYU Langone Hospital-Long Island	C L T
St. Peter's Hospital	C L T
Wyckoff Heights Medical Center	C CP E
Cohen Children's Medical Center	E IM
Garnet Health	C E
Glens Falls Hospital	C E
Long Island Community Hospital	C E
Montefiore St Lukes's Cornwall	C E
Mount Sinai Beth Israel	C E
Mount Sinai South Nassau Hospital	C E
Northwell Health Long Island Jewish Hospital	C L
Olean General Hospital	C E
Richmond University Medical Center	C CP
Rochester Regional Health System	L T
Stony Brook Southampton Hospital	C E
The Brooklyn Hospital Center	C CP
United Health Services Hospitals /Wilson Regional	L T
UPMC Chautauqua	CP E
UVM Health Network CVPH	C E
Brookdale Hospital & Medical Center	E
Crouse Hospital	L
Montefiore Nyack Hospital	C
New York Presbyterian - Morgan Stanley Children's	IM
Niagara Falls Memorial Medical Center	C
Northern Westchester Hospital	C
Northwell Health Huntington Hospital	C
NYU Langone Hospital - Brooklyn	C
Peconic Bay Medical Center	C
Samaritan Hospital	C
Saratoga Hospital	C
SBH Health System	C
St. Catherine of Siena	C
White Plains Hospital	C

NORTH CAROLINA

Carolina East Medical Center	C CP E L T CL CP HF
University of North Carolina Hospital	A C CP E IM L T CP TV
New Hanover Regional Medical Center	A C CP E L T CL CP
Duke University Hospital	C CP E IM L T
Frye Regional Medical Center	C CP E CL CP

Novant Health Presbyterian Medical Center	A C CP L T CP
Atrium Health's Carolinas Medical Center	C CP IM L T
Cape Fear Valley Medical Center	C CP E T CP
Moses H. Cone Memorial Hospital	C CP E L T
Novant Health Forsyth Medical Center	A C CP L T
UNC REX Healthcare	C CP L T CP
Vidant Medical Center	C CP E IM L T
Wake Forest Baptist Medical Center	C CP IM L T
WakeMed Raleigh Campus	C CP L T CP
CaroMont Regional Medical Center	C CP E L T
UNC Health Southeastern	A C CP E
Alamance Regional Medical Center	C CP E
Atrium Health Cabarrus	C CP T
Catawba Valley Medical Center	C CP CP HF
Duke Raleigh Hospital	C CP E
Duke Regional Hospital	C CP E
Haywood Regional Medical Center	C E CL CP
Mission Hospital - Memorial Campus	C L T CP
Nash UNC Health Care	C CP CP
Sentara Albemarle Medical Center	C CP E
Wake Forest Baptist High Point Medical Center	C CP CP
WakeMed Cary Hospital	C CP CP
Atrium Health Pineville	C CP
Central Carolina Hospital	C CP HF
Margaret R. Pardee Memorial Hospital	C CP CP
Novant Health - Rowan Medical Center	C CP
Novant Health Huntersville Medical Center	C CP

Novant Health Matthews Medical Center	C CP
Watauga Medical Center	C CP E
Wayne UNC Healthcare	C CP
Wilson Medical Center	C E CP
Davis Regional Medical Center	C CP
FirstHealth Moore Regional Hospital	C T
Harris Regional Hospital	C CP
Iredell Memorial Hospital	C CP
Johnston Health	C CP
Lake Norman Regional Medical Center	C CP
Maria Parham Health	C CP
Atrium Health Union	C
Betsy Johnson Hospital	CP
Caldwell Memorial Hospital	C
Carteret Health Care	C
Central Harnett Hospital	CP
DLP Cardiac Partners LLC/BRC	C
Halifax Regional Medical Center	C
Johnston Health Clayton	CP
Person Memorial Hospital	CP
Rutherford Regional Health System	CP
Scotland Healthcare System	C
Swain County Hospital	CP
Wayne Memorial Hospital	CP

NORTH DAKOTA

Essentia Health Fargo	C CP L T CP
Sanford Medical Center Bismarck	C CP L T CP
Sanford Medical Center Fargo	C CP L T CP
Altru Health System	C CP L T
Trinity Hospitals	C CP E
CHI St. Alexius Health	A C

OHIO	
ProMedica Toledo Hospital	C CP E L T CL CP
Summa Health System - Akron Campus	C CP L T CP HF TV
Southwest General Health Center	A C CP E L T
Aultman Hospital	C CP L T CP
Firelands Regional Medical Center	C CP E CP HF
Mercy Health - Fairfield Hospital	C CP E T CL CP
Mercy Health - West Hospital	C CP E L CL CP
St. Rita's Medical Center	C CP E L T TV
The Jewish Hospital - Mercy Health	C CP E L CL CP
The University of Toledo Medical Center	C CP E L T
Bethesda Hospital	A C E L T
Cleveland Clinic	C E IM L T
Fairview Hospital	C CP E CP
Genesis Hospital	C L T CL CP
Hillcrest Hospital	C CP E CP
Kettering Medical Center	A C E L T
Mercy Medical Center	C E T CL HF
Mount Carmel East Hospital	C E L T EP
Saint Elizabeth Youngstown Hospital	C CP E L T
The MetroHealth System	C CP L T
Atrium Medical Center	C E L CP
Cleveland Clinic Akron General	C E L T
Fairfield Medical Center	A C E T
Fort Hamilton Hospital	C CP E
Grandview Medical Center	A C E L
Knox Community Hospital	C CP CP
Lima Memorial Health System	C E T CP

Continues on next page

Congratulations to the recipients of the **Chest Pain - MI Registry™ Performance Achievement Award**
Rewarding Excellence. Driving Success.

The Chest Pain - MI Registry™ Performance Achievement Award recognizes a hospital's success in sustaining a superior standard of care for patients experiencing a heart attack.

The Registry helps hospitals improve patient outcomes using ACC/AHA clinical guidelines to measure care and provide real-time data to drive decision making.

As the nation's largest and most authoritative quality improvement registry, the Chest Pain - MI Registry is committed to improving health outcomes for patients.

View hospitals participating in the registry at [CardioSmart.org/ChestPainMI](https://www.CardioSmart.org/ChestPainMI)





Mercy Health - Anderson Hospital.....	C CP E CL
Miami Valley Hospital.....	C E L T
Springfield Regional Medical Center.....	C CP E T
Summa Health System - Barberton Campus.....	C CP CP ▲
University Hospitals Cleveland Medical Center.....	C CP L T
University Hospitals St. John Medical Center.....	C CP CP ▲
The Christ Hospital Health Network.....	C L T TV
Adena Regional Medical Center.....	C CP L
Blanchard Valley Hospital.....	C E CP
Grant Medical Center.....	C L T
Lake West Medical Center.....	C E CP
McLaren St. Luke's.....	C E CP
Mount Carmel Grove City.....	C E EP
Mount Carmel St Ann's Hospital.....	C E EP
OhioHealth Mansfield Hospital.....	C L T
Riverside Methodist Hospital.....	C L T
The Ohio State University Medical Center.....	C L T
Trinity Medical Center West.....	A C E
Trumbull Regional Medical Center.....	C E CP
University Hospitals Ahuja Medical Center.....	C CP CP
University Hospitals Elyria Medical Center.....	C CP CP
University Hospitals Geauga Medical Center.....	C CP CP
University Hospitals Parma Medical Center.....	C CP CP
University Hospitals Portage Medical Center.....	C CP CP
University of Cincinnati Medical Center.....	C L T
Community Hospital and Wellness Center.....	C E
Coshocton Regional Medical Center.....	CP HF
Good Samaritan Hospital.....	C E
Holzer Cardiovascular Institute.....	C E
Marietta Memorial Hospital.....	C E
Mercy Health Lorain Hospital.....	C E
Mercy St Vincent Medical Center.....	C T
Nationwide Children's Hospital.....	E IM
Soin Medical Center.....	C E
Wooster Community Hospital.....	C CP
Ashtabula County Medical Center.....	E
Avita Ontario Hospital.....	C
Children's Hospital Medical Center of Akron.....	IM
Cincinnati Children's Hospital Medical Center.....	IM
Clinton Memorial Hospital.....	C
Doctors Hospital.....	C
East Liverpool City Hospital.....	CP
Fisher - Titus Medical Center.....	C
Galion Community Hospital.....	C
Licking Memorial Hospital.....	C
Mary Rutan Hospital.....	C

Memorial Health.....	C
Mercy Health - Clermont Hospital.....	CP
Mercy St. Anne Hospital.....	C
Mercy Tiffin Hospital.....	C
Miami Valley Hospital South.....	C
OhioHealth Marion General Hospital.....	C
Promedica Flower Hospital.....	C
Rainbow Babies & Children's Hospital.....	IM
Southern Ohio Medical Center.....	C
Summa Western Reserve Hospital.....	CP
Taylor Station Surgical Center.....	E
UC Health - West Chester Hospital.....	C
University Hospital East.....	C
University Hospitals Bedford Medical Center.....	CP
University Hospitals Conneaut Medical Center.....	CP
University Hospitals Geneva Medical Center.....	CP
University Hospitals Richmond Medical Center.....	CP
University Hospitals Samaritan Medical Center.....	CP
Upper Valley Medical Center.....	C
Wilson Memorial Hospital.....	C

OKLAHOMA

Hillcrest Hospital South.....	C CP E CL CP ▲
St John Medical Center.....	C CP E L T TV ▲
Norman Regional HealthPlex.....	C CP E T CP ▲
Oklahoma Heart Institute at Hillcrest Medical Center.....	C CP E L T ▲
INTEGRIS Baptist Medical Center.....	C CP E L T
Oklahoma Heart Hospital.....	C E L T
Oklahoma Heart Hospital South.....	C E L T
AllianceHealth Midwest.....	C CP CP
INTEGRIS Baptist Medical Center Portland Avenue.....	C CP CP
INTEGRIS Southwest Medical Center.....	C CP E
OU Medicine, Inc.....	C IM T
Saint Francis Hospital.....	C L T
St. Anthony Hospital.....	C L T
AllianceHealth Durant.....	C CP
Jane Phillips Memorial Medical Center.....	C E
Northeastern Health System.....	C E
AllianceHealth Clinton.....	CP
AllianceHealth Madill.....	CP
AllianceHealth Ponca City.....	CP
AllianceHealth Seminole.....	CP
Integrus Grove Hospital.....	C
McAlester Regional Health Center.....	C
Mercy Hospital Ardmore, Inc.....	C
Oklahoma State University Medical Center.....	E
Oklahoma Surgical Hospital LLC.....	E
Saint Francis South, LLC.....	CP
St Mary's Regional Medical Center.....	CP
St. Anthony Shawnee Hospital Inc.....	C
Stillwater Medical Center.....	C

OREGON

Oregon Health & Science University.....	A C CP IM L T
Asante.....	C CP L T ▲

Bay Area Hospital.....	C CP CP ▲
Kaiser Sunnyside Medical Center.....	C E L T
Legacy Emanuel Medical Center.....	C E L T
PeaceHealth Sacred Heart Medical Center at RiverBend.....	G L T CP
St. Charles Health System.....	C CP L T
Mckenzie Willamette Medical Center.....	C CP T
Providence Saint Vincent Medical Center.....	C L T
Salem Hospital.....	C L T
Adventist Health Portland.....	A CP
CHI Mercy.....	C E
Good Samaritan Regional Medical Center.....	C T
Legacy Good Samaritan Medical Center.....	C E
Legacy Meridian Park Medical Center.....	C E
Providence Medford Medical Center.....	C CP
Legacy Mount Hood Medical Center.....	C
Providence Portland Medical Center.....	C
Tuality Healthcare.....	C
Willamette Valley Medical Center.....	CP

PENNSYLVANIA

Chester County Hospital.....	C CP E T CL CP EP ▲
Conemaugh Memorial Medical Center.....	C CP E L T CL CP HF ▲
Albert Einstein Medical Center.....	C CP E L T CL EP ▲
Doylestown Hospital.....	A C CP E L T CP ▲
Regional Hospital of Scranton.....	C CP L T CL CP TV ▲
UPMC Altoona.....	C CP E L T CL CP EP
Butler Memorial Hospital.....	C CP E L T CP ▲
St. Mary Medical Center.....	A C CP E L T CP
Hospital of the University of Pennsylvania.....	C CP E L T ▲
Penn Presbyterian Medical Center.....	C CP E L T ▲
Saint Vincent Hospital.....	C CP E L T CP
UPMC Harrisburg.....	C CP E L T ▲
Washington Health System.....	C CP E L T ▲
Allegheny General Hospital.....	C CP E L T
Excelsa Health Westmoreland Hospital.....	A C E L T
Mercy Fitzgerald Hospital.....	C CP E CP ▲
Penn State Health St. Joseph.....	C CP L T ▲
Penn State Hershey Medical Center.....	C E IM L T
Pennsylvania Hospital.....	C CP E L ▲
Reading Hospital.....	A C E L T
Sharon Regional Medical Center.....	C CP T CP ▲
St. Luke's University Hospital - Bethlehem Campus.....	C E L T CP
Temple University Hospital.....	C CP E L T
The Guthrie Clinic.....	A C E L T
UPMC Hamot.....	C CP E L T
UPMC Memorial.....	C CP E CP ▲
UPMC Passavant Hospital.....	C CP E L T
Wilkes - Barre General Hospital.....	C CP L CL CP
Crozer Chester Medical Center.....	C CP L T
Einstein Medical Center Montgomery.....	C E T CP
Geisinger Medical Center.....	C IM L T
Jeanes Hospital.....	C CP E ▲
Jefferson Hospital.....	C CP E ▲

Lehigh Valley Health Network.....	C E L T
Penn Medicine/Lancaster General Health.....	C E L T
UPMC Hanover.....	C CP E ▲
UPMC Presbyterian Hospital.....	C CP E L
UPMC Shadyside Hospital.....	C E L T
UPMC Susquehanna.....	C CP E T
UPMC West Shore.....	C CP E ▲
WellSpan York Hospital.....	C L T CP
West Penn Hospital.....	C CP E ▲
Abington Memorial Hospital.....	C L T
Conemaugh Nason Medical Center.....	C E CP
Forbes Hospital.....	C CP E
Geisinger Wyoming Valley Medical Center.....	C L T
Lankenau Medical Center.....	C L T
Lehigh Valley Health Network Muhlenberg.....	C E L
Meadville Medical Center.....	C CP ▲
Nazareth Hospital.....	C CP CP
Penn State Health Holy Spirit Medical Center.....	C L T
St. Clair Hospital.....	C E T
Thomas Jefferson University Hospital.....	C L T
UPMC East.....	C CP E
UPMC MERCY.....	C CP E
ACMH Hospital.....	C CP
Bryn Mawr Hospital.....	C L
Chambersburg Hospital.....	C CP
Children's Hospital of Philadelphia.....	E IM
Geisinger Community Medical Center.....	C T
Indiana Regional Medical Center Cardiology Department.....	C E
J.C. Blair Memorial Hospital.....	C E
Jefferson Torresdale.....	C L
Lehigh Valley Hospital - Pocono.....	C E
Mount Nittany Medical Center.....	C E
Phoenixville Hospital.....	C L
Somerset Hospital.....	C CP
St. Luke's Hospital - Allentown Campus.....	C CP
St. Luke's Hospital - Monroe Campus.....	C CP
The Uniontown Hospital.....	C E
UPMC Lititz.....	C E
UPMC McKeesport.....	C E
Berwick Hospital Center.....	CP
Chan Soon - Shiong Medical Center at Windber.....	C
Conemaugh Meyersdale Medical Center.....	CP
Conemaugh Miners Medical Center.....	CP
Easton Hospital.....	CP
Ephrata Community Hospital.....	C
Evangelical Community Hospital.....	C
Grand View Hospital.....	C
Heritage Valley Beaver.....	T
Holy Redeemer Hospital.....	C
Jefferson Bucks.....	C
Lehigh Valley Hospital - Hazleton.....	CP
Lehigh Valley Hospital - Schuylkill East Norwegian Street.....	CP
Lower Bucks Hospital.....	C
Monongahela Valley Hospital.....	C
Moses Taylor Hospital.....	CP

Paoli Hospital.....	C
Penn Highlands Dubois.....	C
Pottstown Hospital Tower Health.....	CP
Prime Healthcare.....	C
Riddle Hospital.....	C
St. Christopher's Hospital For Children.....	IM
St. Luke's Hospital - Lehigh Campus.....	CP
St. Luke's Hospital - Miners Campus.....	CP
St. Luke's University Health Network - Anderson.....	C
The Good Samaritan Hospital.....	C
Tyler Memorial Hospital.....	CP
UPMC Children's Hospital of Pittsburgh.....	IM
UPMC Jameson.....	C
Wayne Memorial Hospital.....	C
WellSpan Gettysburg Hospital.....	C
Wexford Hospital.....	C

PUERTO RICO

Cardiovascular Center of Puerto Rico.....	E L T CP
Hospital Pavia Santurce.....	E L T
Hospital Menonita Cayey.....	L T
Saint Luke's Memorial Hospital.....	E T
Bayamon Medical Center.....	T
Doctors Center Hospital.....	CP
Hospital Auxilio Mutuo.....	CP
Hospital Damas.....	T
VA Caribbean Healthcare System.....	CP

RHODE ISLAND

Rhode Island Hospital.....	C L T
Kent Hospital.....	C E
Landmark Medical Center.....	C E
Miriam Hospital.....	C

SOUTH CAROLINA

Lexington Medical Center.....	C CP E L T CL CP TV ▲
Spartanburg Regional Healthcare System.....	A C CP E L T CP HF ▲
AnMed Health Medical Center.....	A C CP L T CP ▲
McLeod Regional Medical Center.....	C CP E L T CP ▲
Self Regional Healthcare.....	C CP E L T CP ▲
Prisma Health Richland Hospital.....	C CP L T CP ▲
Providence Health.....	C CP E L T CP
Bon Secours St. Francis Health System.....	C CP L T ▲
Greenville Memorial Hospital.....	C L T CP
Medical University of South Carolina.....	C IM L T
Trident Medical Center.....	A C L T
Beaufort Memorial Hospital.....	C CP ▲
Conway Medical Center.....	C CP E
Grand Strand Health.....	C L T
Hilton Head Hospital.....	C CP ▲
Roper Hospital.....	C L T
Carolina Pines Regional Medical Center.....	E CP
Kershaw Medical Center.....	E CP
Tidelands Georgetown Memorial Hospital.....	C CP
Aiken Regional Medical Center.....	C

Cherokee Medical Center.....	CP
Conway Medical Center.....	CP
East Cooper Medical Center.....	C
MUSC Health Florence Medical Center.....	C
MUSC Health Lancaster Medical Center.....	CP
MUSC Health Marion Center.....	CP
Piedmont Medical Center.....	C
Providence Health Northeast.....	CP
Spartanburg Medical Center - Mary Black Campus.....	CP

SOUTH DAKOTA

Avera Heart Hospital of South Dakota.....	C CP L T CP ▲
Monument Health.....	C CP E L T ▲
Sanford Medical Center.....	C CP L T CP ▲
Avera St. Luke's.....	C CP ▲
Prairie Lakes Healthcare.....	C CP
Avera Sacred Heart Hospital.....	E
Sanford Aberdeen Medical Center.....	CP

TENNESSEE

CHI Memorial.....	A C CP L T CP ▲
Jackson - Madison County General Hospital.....	C CP E T CP TV ▲
Turkey Creek Medical Center.....	A C CP L T CP ▲
Baptist Memorial Hospital - Memphis.....	C CP L T CP ▲
Chattanooga - Hamilton County Hospital Authority.....	C CP E L T ▲
Methodist Le Bonheur Germantown Hospital.....	A C E L T CP
Methodist University Hospital.....	A C CP E CP ▲
University of Tennessee Medical Center.....	C CP E L T ▲
Vanderbilt University Medical Center.....	C CP L T CP ▲
Holston Valley Medical Center.....	C CP L T ▲
Maury Regional Medical Center.....	C CP E CP ▲
Parkridge Medical Center.....	A C L T CP
TriStar Centennial Medical Center.....	A C L T CP
Ascension Saint Thomas Hospital West.....	C E L T
Cookeville Regional Medical Center.....	G L T CP
Johnson City Medical Center.....	C CP L T
North Knoxville Medical Center.....	C CP CP ▲
Portsmouth Regional Hospital.....	A C L T CP
Saint Francis Hospital.....	C CP T CP
Vanderbilt Tullahoma - Harton Hospital.....	C CP CP ▲
Ascension Saint Thomas Hospital Midtown.....	C E L
Blount Memorial Hospital.....	CP CP ▲
Bristol Regional Medical Center.....	C CP
Methodist North Hospital.....	C E CP
Saint Francis Hospital - Bartlett.....	C CP CP
Southern Tennessee Regional Health System Winchester.....	C E CP
Sumner Regional Medical Center.....	C E CP
Ascension Saint Thomas Rutherford.....	C E
NorthCrest Medical Center.....	C CP
Parkwest Medical Center.....	L T
Tennova Healthcare - Clarksville.....	C CP

Registries	Accreditations	Awards
A AFib Ablation Registry™	AF Atrial Fibrillation	▲ Chest Pain - MI Registry™ Award Platinum
C CathPCI Registry™	CL Cardiac Cath Lab	▲ Chest Pain - MI Registry™ Award Gold
CP Chest Pain - MI Registry™	CP Chest Pain Center	▲ Chest Pain - MI Registry™ Award Silver
E EP Device Implant Registry™	EP Electrophysiology	◆ HeartCARE Center
IM IMPACT Registry™	HF Heart Failure	
L LAO Registry™	TV Transcatheter Valve	
T STS/ACC TVT Registry™		



Tennova Healthcare - Cleveland	C CP
TriStar Hendersonville Medical Center	C CP
TriStar Horizon Medical Center	C CP
TriStar Skyline Medical Center	C CP
TriStar Southern Hills Medical Center	C CP
TriStar StoneCrest Medical Center	C CP
TriStar Summit Medical Center	C CP
Baptist Memorial Hospital - Tipton	CP
Baptist Memorial Hospital Carroll County	CP
Baptist Memorial Hospital - Union City	CP
CHI Memorial Hospital Hixson	CP
Erlanger Medical Center	CP
Erlanger-Chattanooga Hamilton County Hospital - East Campus	C
Hardin Medical Center	CP
Le Bonheur Children's Hospital	IM
Livingston Regional Hospital	CP
Memphis Hospital	C
Parkridge East Hospital	CP
Riverview Regional Medical Center	CP
Southern Tennessee - Sewanee	CP
Southern Tennessee Regional Health System - Lawrenceburg	CP
Southern Tennessee Regional Health System - Pulaski	CP
Starr Regional Medical Center	CP
Tennova - Jefferson Memorial Hospital	CP
Trousdale Medical Center	CP
Vanderbilt Wilson County Hospital	CP
West Tennessee Healthcare Dyersburg Hospital	CP
West Tennessee Healthcare Volunteer Hospital	CP

TEXAS

CHRISTUS Mother Frances Hospital - Tyler	C CP E L T CL CP HF TV
Baylor St. Luke's Medical Center	A C CP E L T CL EP
CHI St. Luke's Health Memorial Lufkin	C CP E L CL CP EP HF
The Hospitals of Providence Sierra Campus	C CP L T CL CP HF
Doctors Hospital at Renaissance	CP E IM L T CP HF TV
Methodist Hospital	A C CP IM L T CP
Methodist Texsan Hospital	C CP E L CL EP
HCA Houston Healthcare Kingwood	C CP L T AF CP
Houston Methodist Willowbrook Hospital	C CP E L CL CP
Metropolitan Methodist Hospital	A C CP CL CP HF
University Health System	C CP L T CL CP
Woodland Heights Medical Center	C E L CL CP EP

Ascension Seton Medical Center Austin	C CP E L T
Ben Taub Hospital	C CP E T CP
HCA Houston Healthcare Conroe	C CP L T CP
Houston Methodist Hospital	C CP E L T
Houston Methodist The Woodlands Hospital	C CP E L T
Houston Methodist West Hospital	C CP E L T CP
Medical Center Hospital	C CP E L T CP
Medical City Dallas Hospital	A C IM L T CP
Memorial Hermann Hospital TMC	C CP IM L T
Northeast Baptist Hospital	C CP E L CP
Northeast Methodist Hospital	A C CP L CP
Providence Health Center	C CP E L T
United Regional Health Care System	CP E T CP HF
University of Texas Southwestern Medical Center	C CP E L T
UT Health - Tyler	C CP E L T CP
Baptist Medical Center	C CP E T CP
Baylor Scott & White Health	C CP L T
Baylor Scott & White Heart and Vascular - Dallas	C CP L T
Baylor Scott & White Medical Center - Round Rock	C CP L T
CHI St. Luke's Hospital - The Vintage Hospital	C CP E CL CP
CHRISTUS Good Shepherd Medical Center	C CP L T
CHRISTUS Santa Rosa Hospital - New Braunfels	A C CP L CP
CHRISTUS Santa Rosa Hospital - Westover Hills	C CP L CP
CHRISTUS Spohn Hospital Corpus Christi - Shoreline	C CP L T CP
Corpus Christi Medical Center - Bay Area	C CP L T CP
HCA Houston Healthcare Clear Lake	C CP L T CP
HCA Houston Healthcare Medical Center	C CP L T CP
HCA Houston Healthcare Southeast	C CP L CP
Houston Methodist Sugar Land Hospital	C CP E L T
Memorial Hermann Memorial City Hospital	C CP L T
Memorial Hermann The Woodlands Medical Center	C CP L T
North Central Baptist Hospital	C CP E CP
Seton Medical Center Harker Heights	C CP E CL CP
St. David's South Austin Medical Center	A C E L T
St. Luke's Baptist Hospital	C CP E CP
Texas Health Harris Methodist Fort Worth	C CP L T
Texas Health Presbyterian Hospital of Dallas	C CP L T
Texoma Medical Center	C E L T CP
University Medical Center of El Paso	C CP E L CP
Valley Regional Medical Center	C CP L CL CP
AdventHealth Central Texas	C CP E
Ascension Seton Medical Center Hays	C CP E
Ascension Seton Medical Center Williamson	C CP E

Baylor Scott & White Medical Center - College Station	C CP T
BSA Health System	C E T CP
CHI/ St Luke's the Woodlands Hospital	C CP E T
Covenant Health	A C E T
Dallas Regional Medical Center	CP E CP
Dell Seton Medical Center at The University of Texas	C CP E
DeTar Hospital Navarro	C CP CP
HCA Houston Healthcare - West	C CP L CP
HCA Houston Healthcare Mainland	C CP CP
Heart Hospital of Austin	A C L T
Hillcrest Baptist Medical Center	C CP L
Houston Methodist Clear Lake Hospital	C CP E
McAllen Heart Hospital	CP E T CP
Memorial Hermann Southwest Hospital	C CP L T
Methodist Dallas Medical Center	C CP L T
Methodist Richardson Medical Center	C CP L T
Methodist Stone Oak Hospital	C CP E CP
Mission Trail Baptist Hospital	C CP E CP
Paris Regional Medical Center	C CP E CP
Resolute Health Hospital	C CP E CP
Rio Grande Regional Hospital	C CP CP
Shannon Medical Center	C CP T
Shannon Medical Center South	C CP CP HF
St. David's Medical Center	A C E L
St. Joseph Medical Center	C CP E CP
Tarrant County Hospital District	C CP E
Texas Health Heart and Vascular Hospital	C CP T
The Heart Hospital Baylor Plano	C CP L T
University Medical Center	C E L T
University of Texas Medical Branch at Galveston	C E L T
Baylor Scott & White - Grapevine	C CP
Baylor Scott & White Medical Center Irving	C CP
Baylor Scott and White All Saints Medical Center	CP T
CHI St. Joseph Health Regional Hospital	A C L
CHI/St. Luke's Patients Medical Center	C CP E
CHI/St. Luke's Sugar Land Hospital	C CP E
CHRISTUS St. Michael Health System	C CP CP
City Hospital at White Rock	C CP E
HCA Houston Healthcare North Cypress	C CP CP
HCA Houston Healthcare Northwest	C CP CP
HCA Houston Healthcare Pearland	C CP CP
HCA Houston Healthcare Tomball	C CP CP
Hendrick Medical Center North	C L T
Hendrick Medical Center South	C CL CP
Houston Methodist Baytown Hospital	C CP E
Lake Pointe Medical Center	C CP
Las Palmas Medical Center	C CP L
Longview Regional Medical Center	C L T
Medical City Arlington	C CP CP
Medical City Denton	C CP CP
Medical City Fort Worth	C L T
Memorial Hermann Southeast Hospital	C CP T
Methodist Mansfield Medical Center	C CP

Odessa Regional Medical Center	C CP CP
Palestine Regional Medical Center	C E CP
Parkland Health & Hospital System	C E L
Southwest General Hospital	C CP CP
Texas Health Harris Methodist HEB	C CP
Texas Health Harris Methodist Hospital Southwest Fort Worth	C CP
Texas Health Huguley Hospital	C CP E
Texas Health Presbyterian Denton	C CP
Texas Health Presbyterian Hospital Plano	C CP
The Heart Hospital Baylor Denton	C CP
The Medical Center of Southeast Texas	C CP CP
The University of Texas Medical Branch Clear Lake Campus	C E L
Wadley Regional Medical Center	C CP CP
Baptist Hospital of Southeast Texas	L T
Baylor Scott & White Heart and Vascular - FW	C L
Baylor Scott & White Medical Center - Lakeway	C CP
Baylor Scott & White Medical Center - Centennial	C CP
Cedar Park Regional Medical Center	C CP
CHI St. Joseph Health College Station Hospital	A C
CHI/St. Luke's Lakeside Hospital	C E
CHRISTUS Hospital - St Elizabeth	C CP
CHRISTUS San Marcos	C CP
CHRISTUS Santa Rosa Hospital - Medical Center	C CP
Citizens Medical Center	CP CP
Corpus Christi Medical Center - Doctors Regional	CP CP
Del Sol Medical Center	C CP
Doctors Hospital of Laredo	E CP
Harlingen Medical Center	C E
Hospitals of Providence - Memorial Campus	C CP
Hospitals of Providence East Campus	C CP
Huntsville Memorial Hospital	C E
Lake Granbury Medical Center	C CP
Laredo Medical Center	C CP
Lubbock Heart Hospital	E T
Medical City Alliance	C CP
Medical City Plano	C CP
Medical City Weatherford	C CP
Memorial Hermann Cypress Hospital	CP
Memorial Hermann Greater Heights Hospital	CP
Memorial Hermann Katy Hospital	CP
Memorial Hermann Northeast	CP
Memorial Hermann Pearland	CP
Memorial Hermann Sugar Land	CP
Methodist Charlton Medical Center	C CP
Round Rock Medical Center	A C
Texas Regional Medical Center at Sunnyvale	C CP
The Heart Hospital of Northwest Texas	C L
Valley Baptist Medical Center - Brownsville	C CP
Wise Health System	C CP
Ascension Providence	TV
Baylor Medical Center At McKinney	CP
Baylor Scott & White Health, Marble Falls	C

Baylor Scott & White Medical Center Waxahachie	CP
Children's Hospital of San Antonio	IM
Children's Medical Center of Dallas	IM
CHRISTUS Santa Rosa San Marcos	CP
CHRISTUS Spohn Hospital Alice	C
CHRISTUS St. Michael Hospital - Atlanta	CP
Cigarroa Interventional Institute	E
Cook Children's Medical Center	IM
Dell Children's Medical Center of Central Texas	IM
Ennis Regional Medical Center	CP
Guadalupe Regional Medical Center	C
Houston Methodist Clear Lake	CP
Hunt Regional Medical Center	C
Matagorda Regional Medical Center	E
Medical City Frisco	C
Medical City Heart and Spine Hospitals	CP
Medical City Las Colinas	C
Medical City Lewisville	C
Medical City McKinney	C
Medical City North Hills	C
Methodist Speciality and Transplant Hospital	C
Midland Memorial Hospital	E
Nacogdoches Medical Center	C
Nacogdoches Memorial Hospital	E
Navarro Regional Hospital	CP
North Austin Medical Center	C
Parkview Regional Hospital	CP
Peterson Regional Medical Center	C
Texas Children's Hospital	IM
Texas Health Harris Methodist Hospital Alliance	C
Texas Health Presbyterian Hospital Allen	C
The Hospitals of Providence Transmountain Campus	C
University of Texas MD Anderson Cancer Center	E
Valley Baptist Medical Center	C
Valley Baptist Medical Center Brownsville	CP
Wise Health Surgical Hospital at Parkway	E
Wise Health System - East Campus	CP

UTAH

Ogden Regional Medical Center	C CP AF CP HF
St. Mark's Hospital	C CP L T CP
University of Utah Health	C CP L T
Lakeview Hospital	C CP CP
Timpanogos Regional Hospital	C CP L CP
Intermountain Health St. George Regional Hospital	C L T
Intermountain Healthcare	C L T
Intermountain Medical Center	C L T
McKay - Dee Hospital Center	C L T
Mountain View Hospital	C CP CP
Davis Hospital and Medical Center	C CP
Salt Lake Regional Medical Center	C L
Ashley Regional Medical Center	CP
Brigham City Community Hospital	CP
Castleview Hospital	CP
Intermountain Primary Children's Hospital	IM
Jordan Valley Medical Center	C

Jordan Valley Medical Center - West Valley Campus	C
Lone Peak Hospital	CP
Mountain Point Medical Center	C
Mountain West Medical Center	CP

VERMONT

The University of Vermont Medical Center	A C E L T
Central Vermont Medical Center Inc	E

VIRGINIA

Inova Fairfax Medical Campus IHVI	A C CP E IM L T
Winchester Medical Center	C CP E L T CP HF
Carilion Roanoke Memorial Hospital	C CP E L T CP
Centra Lynchburg General Hospital	C CP E L T CP
VCU - Medical College of Virginia	C CP E IM L T
Sentara Norfolk General Hospital	C CP E L T
Sentara Rockingham Memorial Hospital	C CP E L T
SOVAH Health - Danville	C CP E CL CP HF
Augusta Health	C CP CP HF
Bon Secours Southside Medical Center	C CP CL CP
Chesapeake Regional Medical Center	C CP E CP
CJW Medical Center	A C CP L T
Sentara Martha Jefferson Hospital	C CP E CP
Sentara Williamsburg Regional Medical Center	C CP E CP
Sovah Health - Martinsville	C E CL CP HF
University of Virginia Medical Center	A C E L T
Virginia Hospital Center	C CP E L T
Inova Alexandria Hospital	C CP E
Inova Loudoun Hospital	C CP E
LewisGale Medical Center	C CP T CP
Reston Hospital Center	C CP CP
Riverside Regional Medical Center	C E L CP
Sentara Careplex Hospital	C CP E
Sentara Halifax Regional Hospital	C CP E
Sentara Leigh Hospital	C CP E
Sentara Northern Virginia Medical Center	C CP E
Sentara Virginia Beach General Hospital	C CP E
Bon Secours - Memorial Regional Medical Center	C L T
Bon Secours Mercy Health - St. Marys Hospital	C L T
Henrico Doctors Hospital	C L T
LewisGale Hospital Montgomery	C CP CP
Mary Washington Healthcare	C L T
Novant Health UVA Prince William Hospital	C CP
Sentara Obici Hospital	C CP E
Sentara Princess Anne Hospital	C CP
Fauquier Health	C E CP
Bon Secours Maryview Medical Center	C CP
Carilion New River Valley Medical Center	C E

Registries	Accreditations	Awards
A AFib Ablation Registry™	AF Atrial Fibrillation	▲ Chest Pain - MI Registry™ Award Platinum
C CathPCI Registry™	CL Cardiac Cath Lab	▲ Chest Pain - MI Registry™ Award Gold
CP Chest Pain - MI Registry™	CP Chest Pain Center	▲ Chest Pain - MI Registry™ Award Silver
E EP Device Implant Registry™	EP Electrophysiology	◆ HeartCARE Center
IM IMPACT Registry™	HF Heart Failure	
L LAO Registry™	TV Transcatheter Valve	
T STS/ACC TVT Registry™		

Children's Hospital of The King's Daughters, Inc. ...	E IM	Kadlec Regional Medical Center ...	C	SSM Health St. Mary's Hospital - Madison ...	C CP L T ▲
Clinch Valley Medical Center ...	C CP	Providence St. Mary's Medical Center ...	C	Ascension Columbia St. Mary's Hospital Milwaukee ...	C CP L T
Johnston Memorial Hospital ...	C CP	Seattle Children's Hospital ...	IM	Aurora Medical Center in Summit ...	C CP CP ▲
Spotsylvania Regional Medical Center ...	C CP	St. Francis Hospital ...	C	St. Agnes Hospital ...	C E L T
Stonesprings Hospital Center ...	C CP	St. John Medical Center ...	C	UnityPoint Health - Meriter ...	C CP E ▲
Warren Memorial Hospital ...	C CP	Swedish Edmonds Hospital ...	C	Aspirus Wausau Hospital ...	C L T
Bon Secours DePaul Medical Center ...	C	Trios Health ...	C	Bellin Memorial Hospital ...	C L T
Bon Secours St Francis Medical Center ...	C	University of Washington Medical Center - Northwest ...	C	Holy Family Memorial ...	C CP ▲
Centra Southside Community Hospital ...	C	Valley Medical Center ...	C	Watertown Regional Medical Center ...	C E CP
John Randolph Medical Center ...	CP	Virginia Mason Memorial ...	C	Ascension Columbia St. Mary's Hospital Ozaukee ...	C CP
LewisGale Hospital Alleghany ...	CP			Ascension NE Wisconsin St. Elizabeth Hospital ...	C T
LewisGale Hospital Pulaski ...	CP	WEST VIRGINIA		Aurora Medical Center - Kenosha ...	C CP
Mary Immaculate Hospital ...	C	Mon Health Medical Center ...	C CP E L T AF CP ▲	Beloit Memorial Hospital ...	C E
Page Memorial Hospital ...	CP	Wheeling Hospital ...	A C CP E L T CP ▲	Froedtert South, Inc. ...	C E
Riverside Walter Reed Hospital ...	CP	St. Mary's Medical Center ...	C CP L T CP ▲	HSHS Sacred Heart Hospital ...	C T
Shenandoah Memorial Hospital ...	CP	WVU Medicine Camden Clark Medical Center ...	C CP E CL CP ▲	HSHS St. Vincent Hospital ...	C T
Southampton Memorial Hospital ...	CP	Charleston Area Medical Center ...	C CP E L T	Marshfield Medical Center - Eau Claire ...	C CP
Southern Virginia Regional Medical Center ...	CP	Raleigh General Hospital ...	C CP E CP	Mayo Clinic Health System - Eau Claire Hospital ...	C T
Stafford Hospital ...	C	WVU Medicine ...	C E L T	The Monroe Clinic ...	C E
Twin County Regional Healthcare ...	CP	Berkeley Medical Center ...	C E	Ascension NE Wisconsin Mercy Hospital ...	C
Virginia Commonwealth University Medical Center ...	CP	CAMC Memorial Hospital ...	CL CP	Ascension St. Michael's Hospital ...	C
Wythe County Community Hospital ...	CP	St. Francis Hospital ...	C E	Aurora Lakeland Medical Center ...	CP
		Thomas Memorial Hospital ...	C E	Aurora Medical Center Oshkosh ...	C
WASHINGTON		Weirton Medical Center ...	C E	Aurora Sheboygan Memorial Medical Center ...	C
Deaconess Hospital MultiCare Health System ...	C CP L T ▲	WVU Medicine United Hospital Center ...	C E	Children's Hospital of Wisconsin ...	IM
MultiCare Tacoma General Hospital ...	C CP L T ▲	Beckley Appalachian Regional Healthcare ...	C	Community Memorial Hospital ...	C
Virginia Mason Medical Center ...	C CP L T ▲	Cabell Huntington Hospital ...	CP	Froedtert West Bend Hospital ...	CP
Confluence Health Central Washington Hospital & Clinics ...	C CP E T	Greenbrier Valley Medical Center ...	C	HSHS St. Mary's Hospital ...	C
PeaceHealth St. Joseph Medical Center ...	C L T TV	Logan Regional Medical Center ...	CP	Mayo Clinic Health System - Franciscan Healthcare ...	C
Providence Regional Medical Center Everett ...	A C L T	Princeton Community Hospital ...	C	Mercyhealth Hospital and Medical Center - Walworth ...	CP
Providence Sacred Heart Medical Center ...	C IM L T	Reynolds Memorial Hospital ...	C	Oconomowoc Memorial Hospital ...	C
St. Joseph Medical Center ...	A C L T			Wheaton Franciscan - St Joseph Campus ...	C
St. Michael Medical Center ...	A C L T	WISCONSIN		Wheaton Franciscan Healthcare - Franklin, Inc ...	C
Swedish Health Services ...	A C L T	Aurora St. Luke's Medical Center ...	A C CP L T CP TV ▲	Wheaton Franciscan Healthcare - All Saints, Inc ...	C
MultiCare Auburn Medical Center ...	C CP ▲	Marshfield Medical Center ...	A C CP E L T ▲	Wheaton Franciscan Healthcare - St. Francis, Inc ...	C
MultiCare Good Samaritan Hospital ...	C CP ▲	UW Health ...	C CP E IM L T ▲	Wheaton Franciscan Inc. Elmbrook Memorial Campus ...	C
Overlake Hospital Medical Center ...	C E T	Waukesha Memorial Hospital ...	A C L T CL CP HF		
PeaceHealth Southwest Medical Center ...	C L T	Gundersen Lutheran Health System ...	C CP E L T ▲	WYOMING	
Providence St. Peter Hospital ...	C L T	Marshfield Medical Center - Weston ...	A C CP E T ▲	Wyoming Medical Center ...	C CP E T ▲
University of Washington Medical Center - Montlake ...	C L T	Mercyhealth Hospital and Trauma Center - Janesville ...	C CP E L T CP	Campbell County Health ...	C CP E ▲
Capital Medical Center ...	C E	ThedaCare Regional Medical Center - Appleton ...	C E L T CL CP	Cheyenne Regional Medical Center ...	C CP ▲
Evergreen Healthcare ...	C E	Aurora BayCare Medical Center ...	A C CP CL ▲	Sheridan Memorial Hospital ...	C E HF
Legacy Salmon Creek Medical Center ...	C E	Aurora Medical Center in Grafton ...	A C CP CP ▲	SageWest Healthcare - Lander ...	C CP
Astria Sunnyside Hospital ...	C	Froedtert Hospital ...	C E L T CP	Cody Regional Health ...	C
CHI Franciscan Health St. Anne Hospital ...	C			Evanston Regional Hospital ...	CP
Grays Harbor Community Hospital ...	C			SageWest Health Care at Riverton ...	CP

To learn more about hospitals and centers near you, visit FindYourHeartAtHome.org.



RECOGNIZE & RESPOND Heart Attack

Do You Know the Signs of a Heart Attack?

Heart attacks have **beginnings**. Use CardioSmart® patient tools, including **Early Heart Attack Care™ (EHAC®)**, to learn the signs so you can recognize and respond.

EARLY TREATMENT SAVES LIVES!



If you think you're having a heart attack, **DON'T DELAY ... CALL 911!**

Shortness of breath

Discomfort in back, neck, shoulder, or jaw

Cold sweat

Anxiety

Nausea or vomiting

Chest pressure, squeezing, aching, or burning

Pain that travels down one or both arms

Sudden dizziness

Excessive fatigue or weakness

RECOGNIZE and RESPOND

The American College of Cardiology (ACC), the professional home for heart care teams, works with **Accredited and Certified Chest Pain Centers** across the U.S. to improve the diagnosis and treatment of patients with heart attack symptoms.



Supported by the ACC's Accreditation Foundation Committee.



AMERICAN COLLEGE of CARDIOLOGY

©2021 American College of Cardiology Z21008

Find a center in your community and access free EHAC training videos and other resources at CardioSmart.org/EHAC

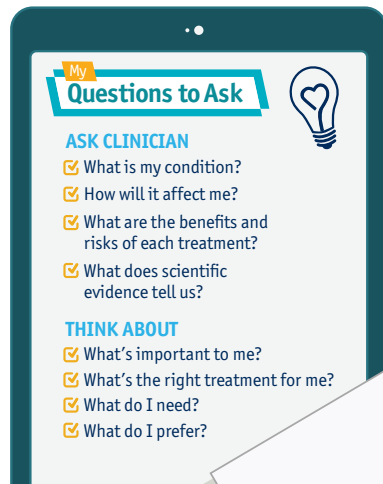
#EHACsavesLives

Patients and clinicians work together to decide treatment options.

SHARED DECISION-MAKING

PARTNERS IN CARE

DECISION AIDS are tools to help you make **INFORMED DECISIONS** with your care team that are **RIGHT FOR YOU**



Use **SHARED DECISION-MAKING TOOLS** to talk with your clinician about **YOUR CARE OPTIONS & CONCERNS**. The tools help you to:

Increase your knowledge & satisfaction with care

Define clearer goals for treatment

Align health decisions with your values

DECISION AIDS are **HELPFUL** when there is more than one treatment, there are big trade-offs or the **PATH FORWARD IS UNCLEAR**

Visit [CardioSmart.org/Decisions](https://www.CardioSmart.org/Decisions) to learn more.

@CardioSmart

Information provided for educational purposes only. Please talk to your health care professional about your specific health needs. To download or order posters on other topics, visit [CardioSmart.org/Posters](https://www.CardioSmart.org/Posters)

ATRIAL FIBRILLATION

What is ATRIAL FIBRILLATION?

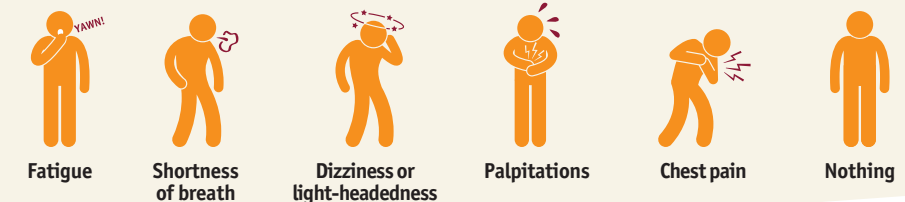
Atrial Fibrillation (AFib) is a **PROBLEM** with the **RATE OR RHYTHM** of the heartbeat, causing the heart to beat quickly and irregularly.

AFib affects **more than 3 million** people in the U.S.

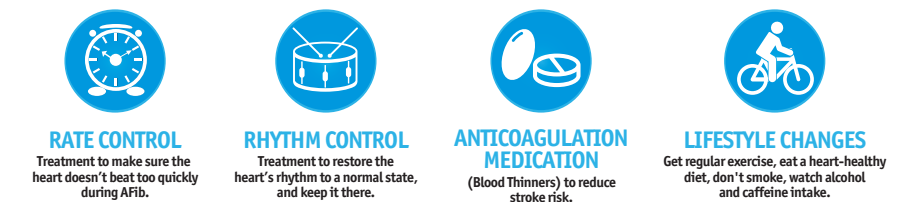
The Types of AFib

- | | | |
|----------------------------|------------------------|---|
| PAROXYSMAL | PERSISTENT | PERMANENT |
| • Comes and goes | • Lasts > 1 week | • Heart cannot be restored to normal rhythm |
| • Usually stops on its own | • Can become permanent | |

What are the SYMPTOMS?



How is it TREATED?



Visit [CardioSmart.org/AFib](https://www.CardioSmart.org/AFib) to learn more.

@CardioSmart

Information provided for educational purposes only. Please talk to your health care professional about your specific health needs. To download or order posters on other topics, visit [CardioSmart.org/Posters](https://www.CardioSmart.org/Posters)

Decision aids help **YOU** and your **HEART CARE TEAM** choose the best path based on your values.

Powered by American College of Cardiology's NCDR® and CardioSmart®



Visit [CardioSmart.org/DecisionAids](https://www.CardioSmart.org/DecisionAids) today!

Find tools to help you make treatment decisions and resources on heart health.



Celebrating Great Achievements

The American College of Cardiology (ACC) applauds those hospitals and health care facilities that have achieved a HeartCARE Center designation and the work of the HeartCARE Center champions who provide leadership in earning this great distinction.

Each of the institutions demonstrates a commitment to world-class cardiovascular care through community engagement coupled with quality improvement in care delivery and implementation of disease and procedure-specific accreditation programs. Additionally, the constant support of many qualified and dedicated physicians and cardiovascular care team members, including credentialed Fellows and Associates of the ACC, is essential to each hospital and facility's ongoing HeartCARE Center achievement.

We recognize their collaborative efforts, purposeful focus, and passion for excellence in working to deliver exceptional care and optimal outcomes for cardiovascular patients.

Please visit cvquality.acc.org/hcc to learn how hospitals can achieve ACC's HeartCare Center recognition.



NORTHEAST

**Christiana Care Health System
Wilmington, DE**
Jennifer Oldham, MSN, RN, AACC
Neil Wimmer, MD, FACC

**Lahey Hospital and
Medical Center
Burlington, MA**
Shauna Holden*, NP-C
Frederic Resnic, MD, FACC

**Lawrence General Hospital
Lawrence, MA**
Kathy Caredeo, RN, AACC
Sunit Mukherjee, MD, FACC

**JFK Medical Center
Edison, NJ**
Charyl Asuncion, AGPCNP-BC, MSN, AACC
Saleem Husain, MD, FACC

**St. Elizabeth Medical Center
Utica, NY**
Wendy Cooley, BSN, RN-BC, AACC
Michael Kelberman, MD, FACC

**Conemaugh Memorial
Medical Center
Johnstown, PA**
Shannah D Boyer, CCRN, RN, AACC
Cyril Nathaniel, MD, FACC

**Einstein Medical Center
Philadelphia, PA**
Yolanda Nixon Huertas, ACNP-BC, CRNP,
MSN, AACC
Sumeet Mainigi, MD, FACC

**Regional Hospital of Scranton
Scranton, PA**
Debra Jadick, NP, AACC
Srihar Sampath-Kumar, MD, FACC

**Chester County Hospital
West Chester, PA**
Ralph G Smith, IV, RN, AACC
Timothy Boyek, MD, FACC

SOUTH

**AdventHealth Ocala
Ocala, FL**
Lynn Smith, RN, AACC
Robert Feldman, MD, FACC

**AdventHealth Tampa
Pepin Heart Institute
Tampa, FL**
Esther Fernandez, ARNP, AACC
Charles Lambert, MD, PhD, MBA, FACC

**Baptist Health Lexington
Lexington, KY**
Megan Switzer, NP, AACC
Azhar Aslam, MBBS, FACC

**Baptist Health Paducah
Paducah, KY**
Blair Brockman, NP, AACC
Michael Faulkner, MD, FACC

**Our Lady of the Lake
Regional Medical Center
Baton Rouge, LA**
Dawn Denicola, FNP-C, AACC
Bryan Hathorn, MD, FACC

**CHRISTUS St. Patrick Hospital
Lake Charles, LA**
Anna Landry, NP, AACC
Michael Turner, MD, FACC

**Norton Audubon
Louisville, KY**
Melissa Wright, APRN, AACC
Ibrahim Fahsah, MD, FACC

**Frye Regional Medical Center
Hickory, NC**
Seth A Call, PA-C, AACC
Vincent Patrone, MD, FACC

**CarolinaEast Medical Center
New Bern, NC**
Laura Peters, BS RT, AACC
Alex Kirby, MD, FACC

**Hillcrest Hospital South
Tulsa, OK**
Michelle Bierig, RCS, RDCS, AACC
Edward Martin, MD, FACC

**Spartanburg Regional
Healthcare System
Spartanburg, SC**
Jennifer Smith, MSN, RN, AACC
Nalin Srivastava, MD, FACC

**Lexington Medical Center
West Columbia, SC**
Dawn Crumpton, RN-BSN, AACC
Robert Malanuk, MD, FACC

**The Hospitals of Providence
Sierra Campus
El Paso, TX**
Laura Wilson, AGACNP-BC, AACC
Edward Assi, DO, FACC

**Baylor St. Luke's Medical Center
Houston, TX**
Lisa Wall, AGPCNP-BC, NP-C, AACC
Emerson Perin, MD, FACC

**CHI St. Luke's Health
Lufkin, TX**
Jamie Huckabee, FNP-C, AACC
Neil Wimmer, MD, FACC

**Woodland Heights Medical Center,
Lufkin, TX**
Richard Fennell, BSN, CCRN, AACC
Vivek Mangla, MD, FACC

**Methodist Texsan Hospital
San Antonio, TX**
Michael Hendricks, MBA, RN, AACC
Obinna Isiguzo, MBBS, FACC

**CHRISTUS Mother Frances
Hospital, Tyler, TX**
Jamie Moore, RN, AACC
Oscar Paniagua, MD, FACC

**Mon Health Medical Center
Morgantown, WV**
Denise Palmer, RN, AACC
Bradford Warden, MD, FACC

**Camden-Clark Medical Center
Parkersburg, WV**
Peggy Sisson, CCRN, AACC
David Gnegy, MD, FACC

MIDWEST

**Indiana University Health
Methodist Hospital
Indianapolis, IN**
Andrea Price, CPHQ, RCIS, AACC
Richard Kovacs, MD, MACC

**Lutheran Hospital of Indiana
Fort Wayne, IN**
Amanda Lutter, AGPCNP-BC, AACC
Vijay Chilakamarri, MD, FACC

**Bryan Medical Center
Lincoln, NE**
Sarah Schroeder, NP, AACC
John Steuter, MD, FACC

WEST

**Adventist Health and
Rideout Hospital
Marysville, CA**
Eric Cooper, BSN, MPA, NE-BC, RN-BC, AACC
Rajinder Singh, MBBS, FACC

**Medical Center of Aurora
Aurora, CO**
Linda Pilon, CCRN, MSN, NE-BC, AACC
Charlie Fuenzalida MD, FACC

**UCH-Memorial Hospital
Colorado Springs, CO**
Dawn Lovejoy, RN, AACC
Mark Boulware, MD, FACC

**Rose Medical Center
Denver, CO**
Lauren Meehan, MSN, AACC
Michael Wahl, MD, FACC

**Saint Mary's Regional Medical Center,
Reno, NV**
Rachael Coe, RN-BC, AACC
Devang Desai, MBBS, FACC

* AACC application in process

To find a hospital or facility that participates in ACC's quality improvement efforts or to find the right hospital to meet your needs, please visit www.cardiosmart.org/find-your-heart-a-home.



American College of Cardiology



The American College of Cardiology (ACC) recognizes these Health Systems for their commitment to drive preeminent hospital care for heart patients. Participating in the ACC's proven quality care delivery and outcomes programs demonstrates their commitment to better lives for healthier tomorrows.



Tenet Health System	University of California Health System	Yale New Haven Health
Baylor Health Care System	Kaiser Permanente	Johns Hopkins Health System
Sentara Healthcare	Sutter Health	Mayo Foundation for Medical Education and Research
University of Pennsylvania Health System	Orlando Health	ProMedica Health System, Inc.
Ballad Health System	Lehigh Valley Health Network	Quorum Health Corporation
Banner Health	Memorial Health System of California	Sanford Health
Baptist Memorial Healthcare Corporation	Methodist Healthcare	Singing River Health System
BJC HealthCare	MultiCare Health System	SSM Health Care
Christus Health System	Northside Hospital System	St. Luke's University Health Network
Hendrick Health	Northwell Health	University of Colorado Health
Jackson Health System	Norton Hospitals Inc.	University of Louisville Health, Inc.
Legacy Health	PeaceHealth	Wellstar Health System

visit [CVQuality.ACC.org/HealthSystems](https://www.CVQuality.ACC.org/HealthSystems) to learn more.



©2021 American College of Cardiology N21156

THANK YOU TO HEALTH CARE HEROES EVERYWHERE

The American College of Cardiology is deeply grateful for health care workers around the world who have worked tirelessly and courageously to help and heal patients.

Compassionate care has always been at the heart of what you do.

We thank you for all the unflagging sacrifices you have made and continue to make in the lives of your patients, their families and your communities. Your commitment, persistence and dedication deserve our unending admiration and we thank you.



AMERICAN
COLLEGE of
CARDIOLOGY®

Advancing Heart Care Worldwide

ACC is working to provide resources to help health care workers to look after their mental and physical well-being while on the front lines of the COVID-19 pandemic.

Please visit ACC's Resources For Clinician Well-Being for tools and resources specific to these unprecedented times at www.acc.org/clinicianwellbeing.